
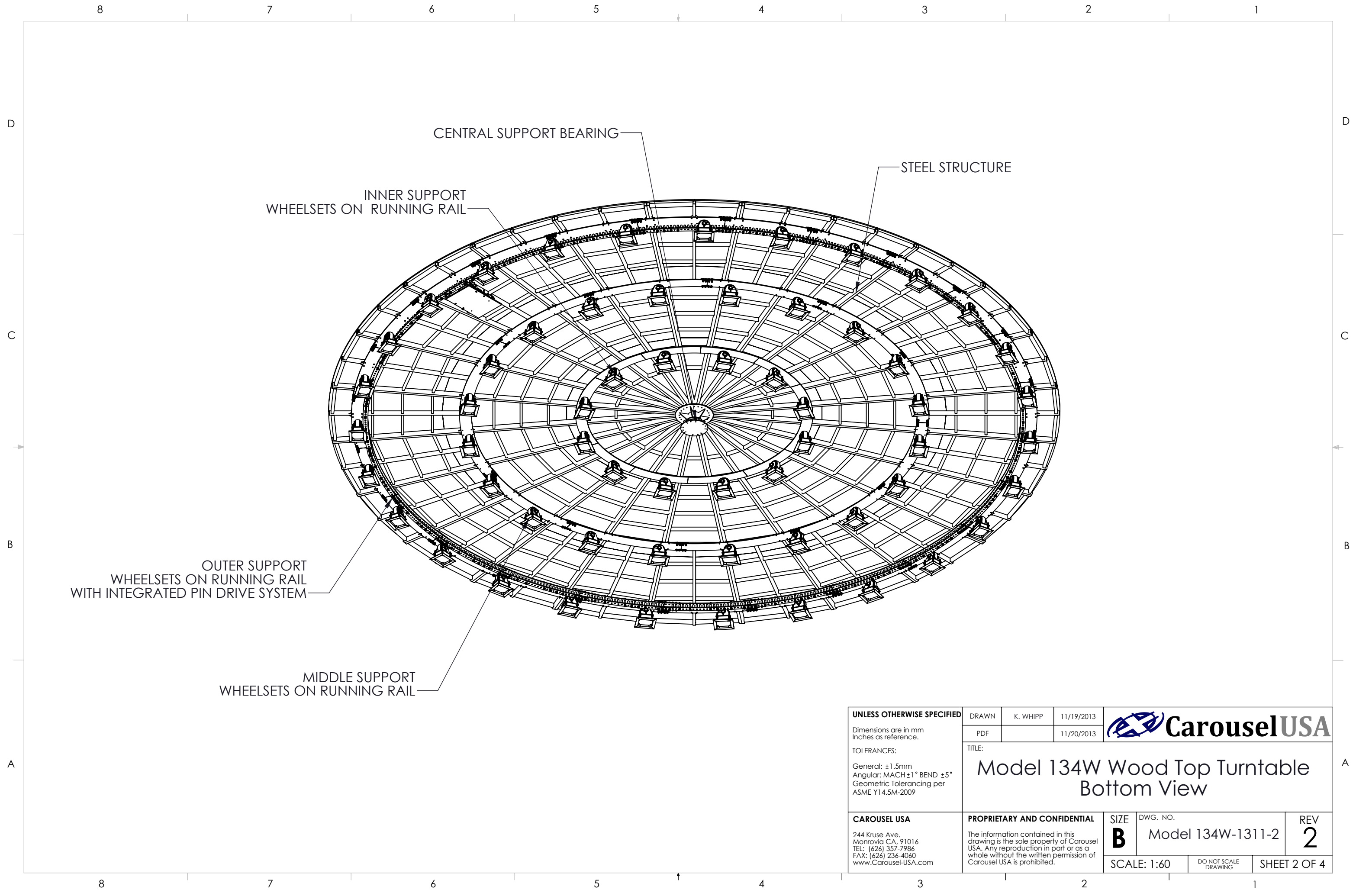

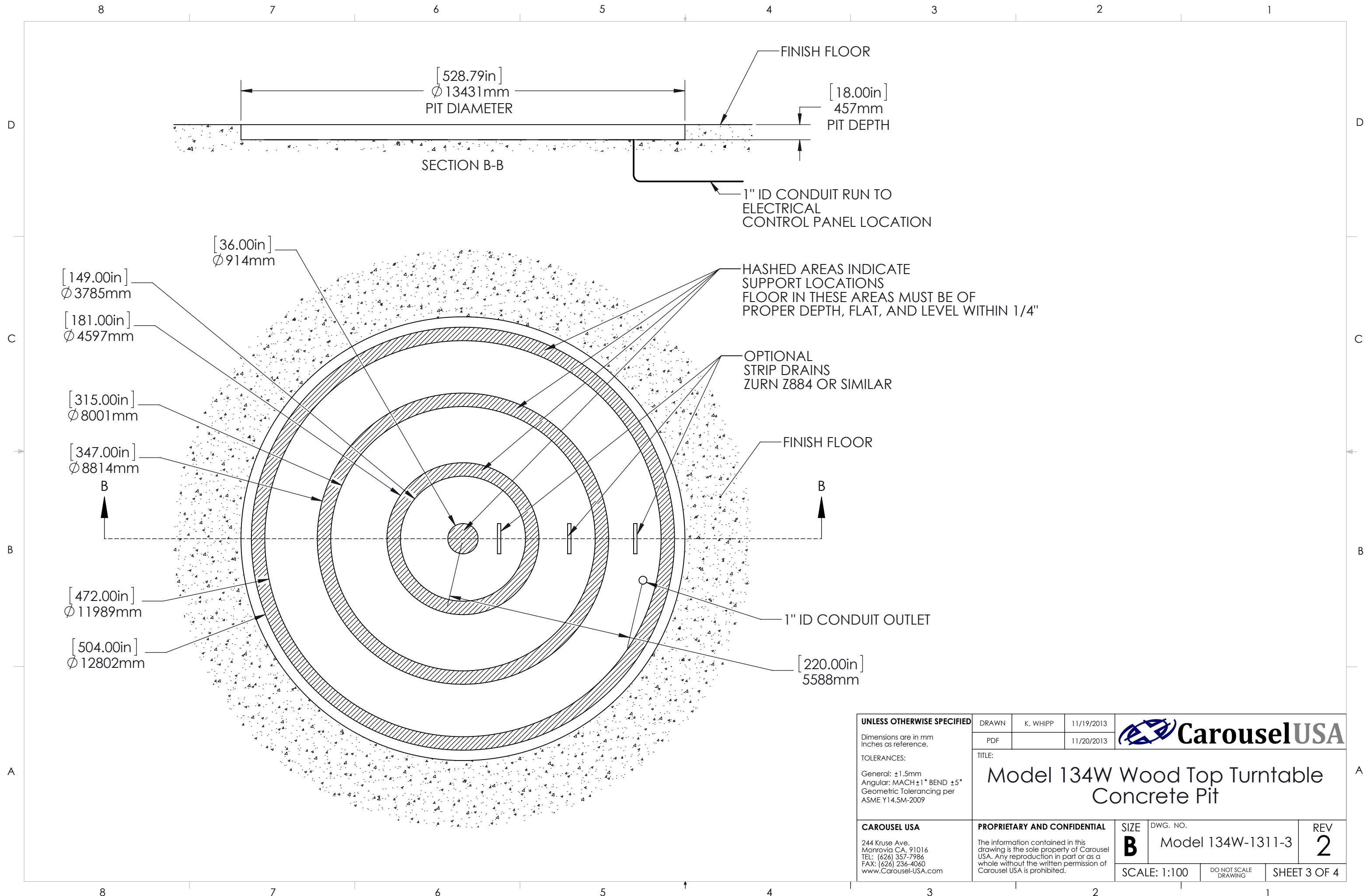



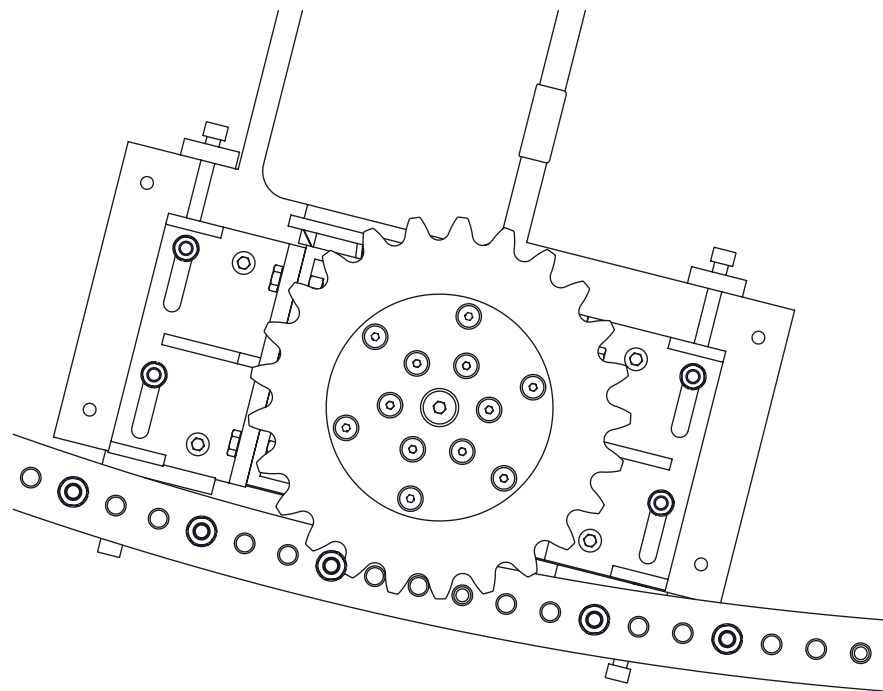
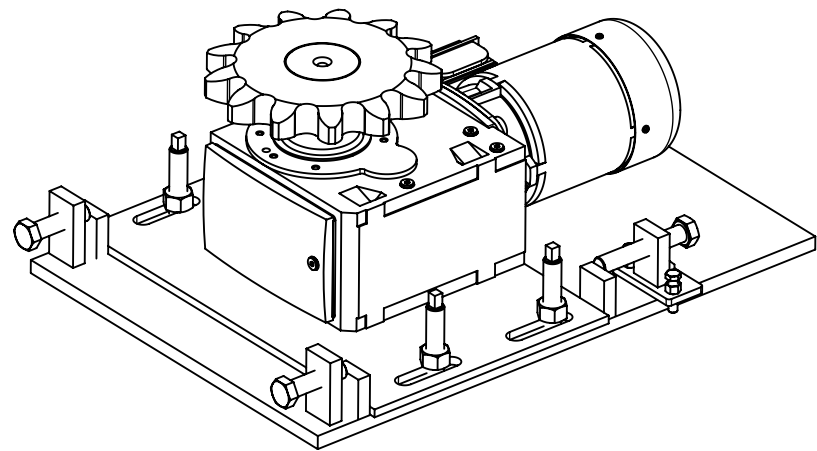
UNLESS OTHERWISE SPECIFIED	DRAWN	K. WHIPP	11/19/2013	 CarouselUSA		
	PDF		11/20/2013			
	Dimensions are in mm Inches as reference.	TITLE: Model 134W Wood Top Turntable Features				
TOLERANCES: General: ±1.5mm Angular: MACH±1° BEND ±5° Geometric Tolerancing per ASME Y14.5M-2009						
CAROUSEL USA 244 Kruse Ave. Monrovia CA, 91016 TEL: (626) 357-7986 FAX: (626) 236-4060 www.Carousel-USA.com	PROPRIETARY AND CONFIDENTIAL The information contained in this drawing is the sole property of Carousel USA. Any reproduction in part or as a whole without the written permission of Carousel USA is prohibited.			SIZE	DWG. NO.	REV
				B	Model 134W-1311-1	2
				SCALE: 1:40		DO NOT SCALE DRAWING



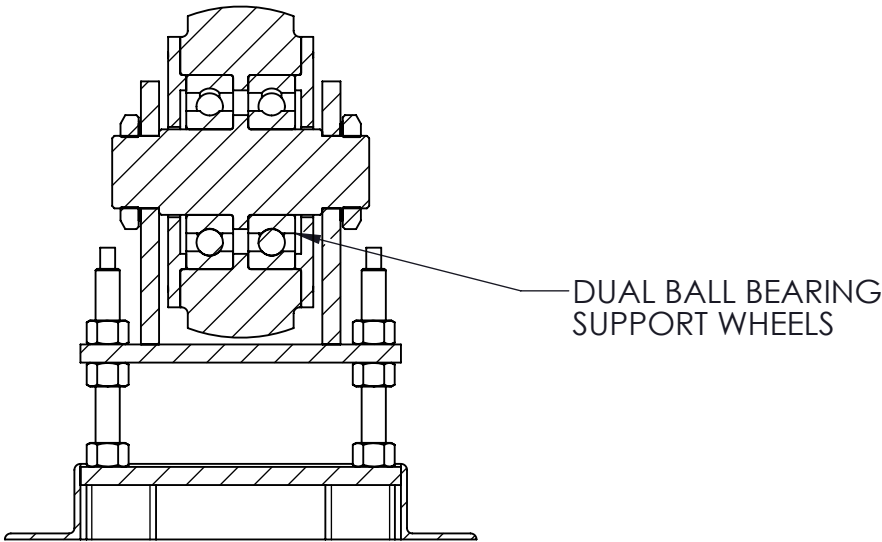
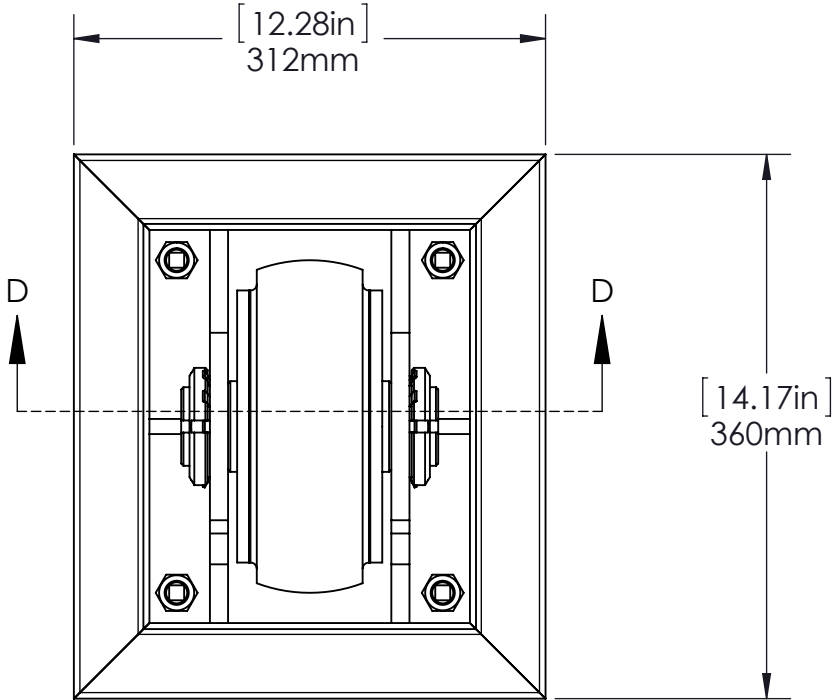
UNLESS OTHERWISE SPECIFIED Dimensions are in mm Inches as reference. TOLERANCES: General: ±1.5mm Angular: MACH±1° BEND ±5° Geometric Tolerancing per ASME Y14.5M-2009	DRAWN	K. WHIPP	11/19/2013	 CarouselUSA		
	PDF		11/20/2013			
	TITLE: Model 134W Wood Top Turntable Bottom View					
CAROUSEL USA 244 Kruse Ave. Monrovia CA, 91016 TEL: (626) 357-7986 FAX: (626) 236-4060 www.Carousel-USA.com	PROPRIETARY AND CONFIDENTIAL The information contained in this drawing is the sole property of Carousel USA. Any reproduction in part or as a whole without the written permission of Carousel USA is prohibited.			SIZE	DWG. NO.	REV
				B	Model 134W-1311-2	2
				SCALE: 1:60	DO NOT SCALE DRAWING	SHEET 2 OF 4




UNLESS OTHERWISE SPECIFIED Dimensions are in mm Inches as reference. TOLERANCES: General: ±1.5mm Angular: MACH ±1° BEND ±5° Geometric Tolerancing per ASME Y14.5M-2009	DRAWN	K. WHIPP	11/19/2013	 CarouselUSA		
	PDF		11/20/2013			
	TITLE: Model 134W Wood Top Turntable Concrete Pit					
CAROUSEL USA 244 Kruse Ave. Monrovia CA, 91016 TEL: (626) 357-7986 FAX: (626) 236-4060 www.Carousel-USA.com	PROPRIETARY AND CONFIDENTIAL The information contained in this drawing is the sole property of Carousel USA. Any reproduction in part or as a whole without the written permission of Carousel USA is prohibited.			SIZE B	DWG. NO. Model 134W-1311-3	REV 2
				SCALE: 1:100	DO NOT SCALE DRAWING	SHEET 3 OF 4



Carousel USA uses a patented pin-gear drive system which provides accurate and consistent torque without the maintenance issues commonly associated with traditional friction drive turntables.



SECTION D-D
SCALE 1 : 5

UNLESS OTHERWISE SPECIFIED Dimensions are in mm Inches as reference. TOLERANCES: General: ±1.5mm Angular: MACH±1° BEND ±5° Geometric Tolerancing per ASME Y14.5M-2009	DRAWN	K. WHIPP	11/19/2013	 CarouselUSA			
	PDF		11/20/2013				
	TITLE: Model 134W Wood Top Turntable Component Views						
CAROUSEL USA 244 Kruse Ave. Monrovia CA, 91016 TEL: (626) 357-7986 FAX: (626) 236-4060 www.Carousel-USA.com	PROPRIETARY AND CONFIDENTIAL The information contained in this drawing is the sole property of Carousel USA. Any reproduction in part or as a whole without the written permission of Carousel USA is prohibited.			SIZE	DWG. NO.		REV
				B	Model 134W-1311-4		2
					SCALE: 1:10		