

8 7 6 5 4 3 2 1

D

D

C

C

B

B

A

A

8

7

6


5

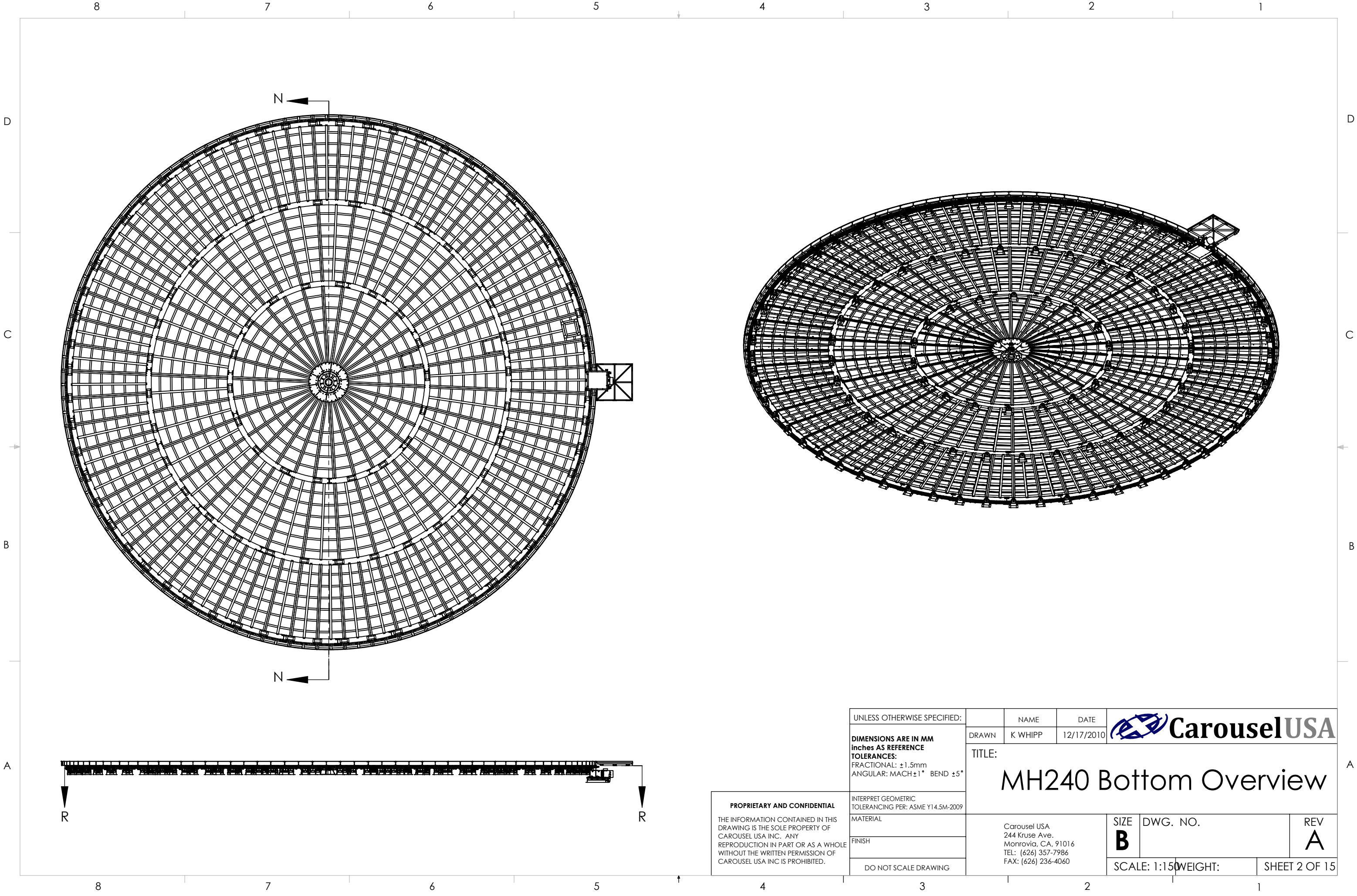
4

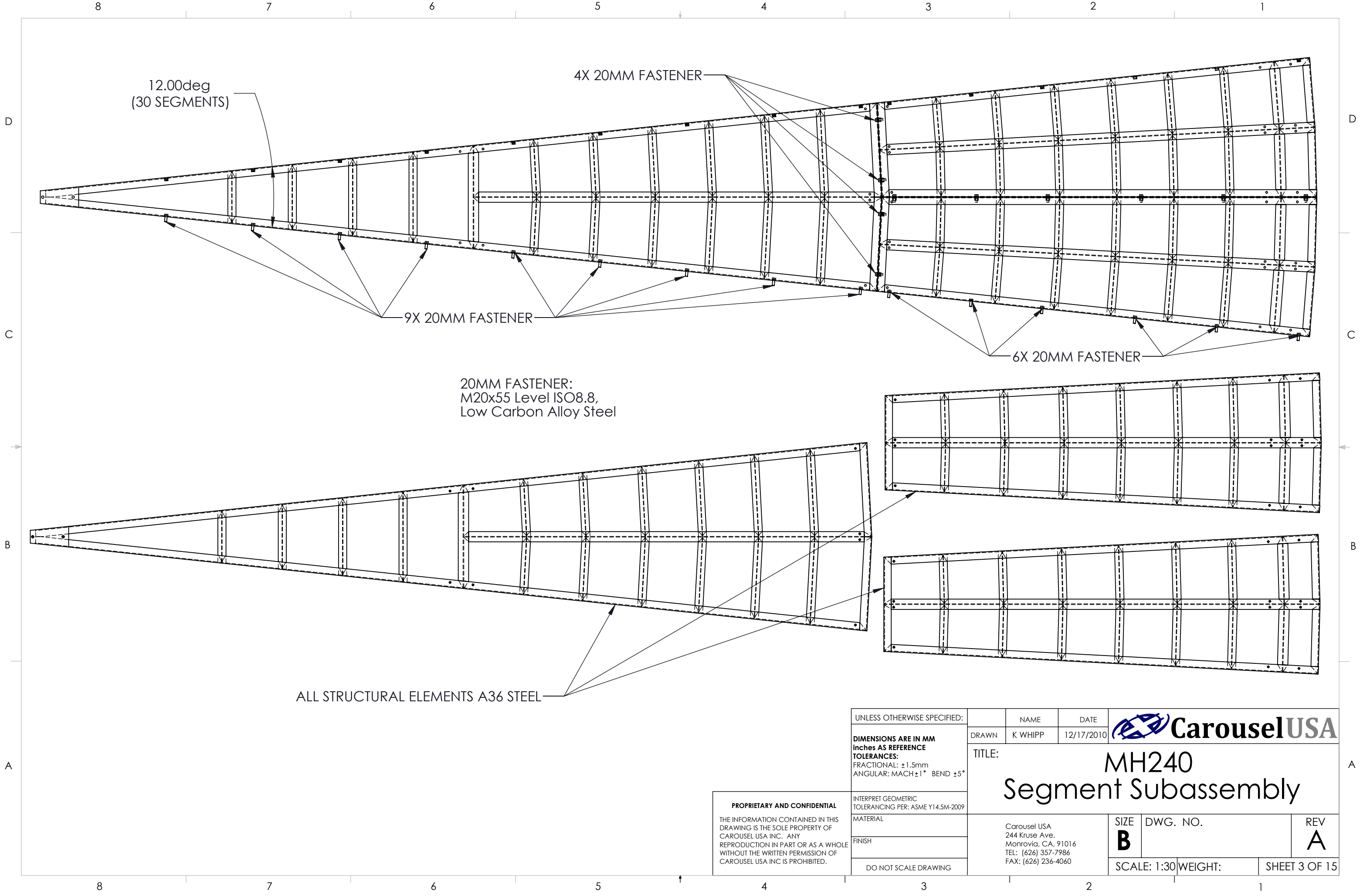
3


2

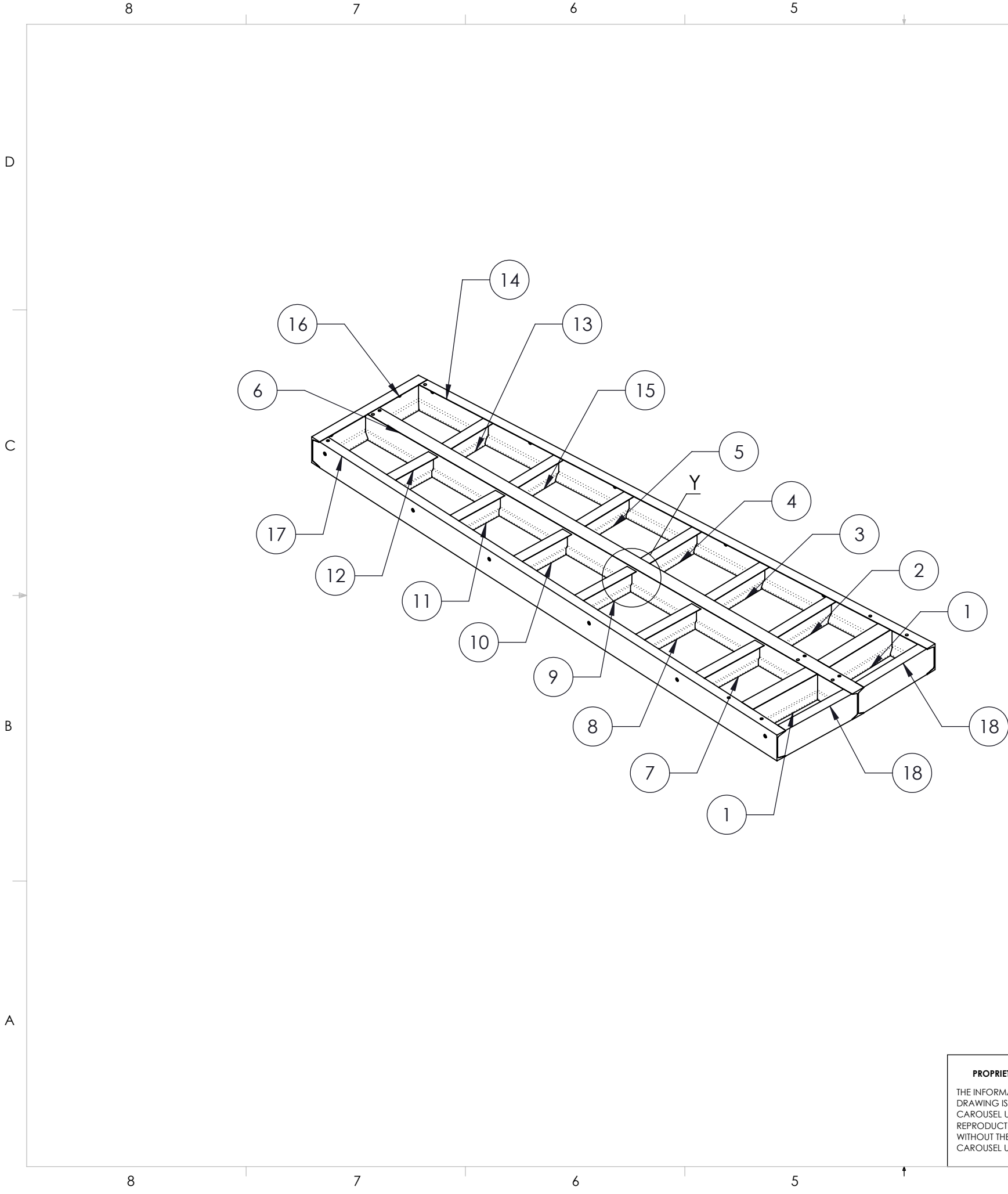
1

| | | | | | | |
|--|---|---------|------------|--|-------------------------|-----------------|
| UNLESS OTHERWISE SPECIFIED: | | NAME | DATE |  CarouselUSA | | |
| DIMENSIONS ARE IN MM inches AS REFERENCE TOLERANCES: FRACTIONAL: ±1.5mm ANGULAR: MACH±1° BEND ±5° | DRAWN | K WHIPP | 12/17/2010 | TITLE: <h1>MH240 Top Overview</h1> | | |
| INTERPRET GEOMETRIC TOLERANCING PER: ASME Y14.5M-2009 | | | | | | |
| MATERIAL | | | | | | |
| FINISH | Carousel USA 244 Kruse Ave. Monrovia, CA, 91016 TEL: (626) 357-7986 FAX: (626) 236-4060 | | | SIZE B | DWG. NO. MH240-(MFG) | REV A |
| DO NOT SCALE DRAWING | | | | SCALE: 1:150 | | WEIGHT: |

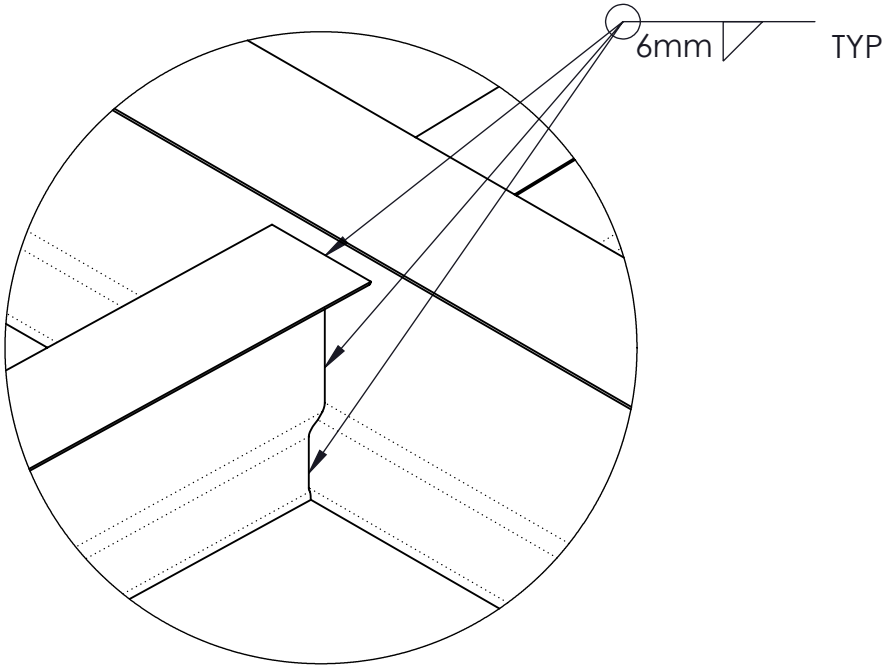




| | | | | | | |
|--|---|---------|------------|--|----------|-----------------|
| UNLESS OTHERWISE SPECIFIED: | | NAME | DATE |  CarouselUSA | | |
| DIMENSIONS ARE IN MM Inches AS REFERENCE TOLERANCES: FRACTIONAL: ±1.5mm ANGULAR: MACH±1° BEND ±5° | DRAWN | K WHIPP | 12/17/2010 | <div>TITLE:</div> <div>MH240</div> <div>Segment Subassembly</div> | | |
| INTERPRET GEOMETRIC TOLERANCING PER: ASME Y14.5M-2009 | | | | | | |
| MATERIAL | | | | | | |
| FINISH | Carousel USA 244 Kruse Ave. Monrovia, CA, 91016 TEL: (626) 357-7986 FAX: (626) 236-4060 | | | SIZE B | DWG. NO. | REV A |
| DO NOT SCALE DRAWING | | | | SCALE: 1:30 | WEIGHT: | SHEET 3 OF 15 |




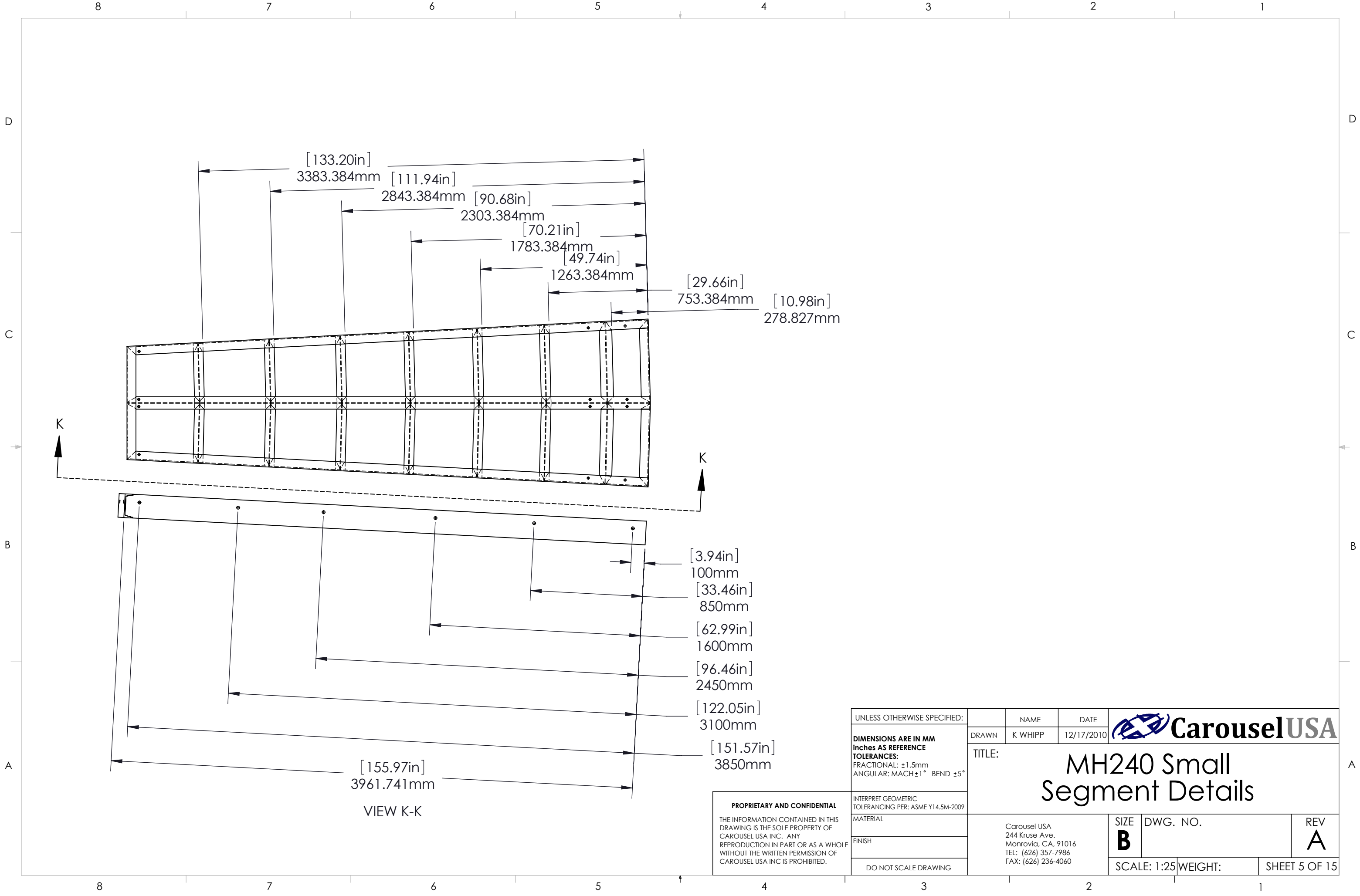
| ITEM NO. | QTY. | DESCRIPTION | LENGTH |
|----------|------|-------------------|--------|
| 1 | 2 | SB BEAM 180 X 4.5 | 610.37 |
| 2 | 1 | SB BEAM 120 X 4.5 | 587.8 |
| 3 | 1 | SB BEAM 120 X 4.5 | 561.09 |
| 4 | 1 | SB BEAM 120 X 4.5 | 533.86 |
| 5 | 1 | SB BEAM 120 X 4.5 | 506.63 |
| 6 | 1 | SB BEAM 180 X 4.5 | 3966 |
| 7 | 1 | SB BEAM 120 X 4.5 | 587.8 |
| 8 | 1 | SB BEAM 120 X 4.5 | 561.09 |
| 9 | 1 | SB BEAM 120 X 4.5 | 533.86 |
| 10 | 1 | SB BEAM 120 X 4.5 | 506.63 |
| 11 | 1 | SB BEAM 120 X 4.5 | 478.35 |
| 12 | 1 | SB BEAM 120 X 4.5 | 450.07 |
| 13 | 1 | SB BEAM 120 X 4.5 | 450.07 |
| 14 | 1 | C CHANNEL 180 X 8 | 3955.1 |
| 15 | 1 | SB BEAM 120 X 4.5 | 478.35 |
| 16 | 1 | C CHANNEL 180 X 8 | 867.03 |
| 17 | 1 | C CHANNEL 180 X 8 | 3955.1 |
| 18 | 2 | C CHANNEL 180 X 8 | 627.26 |




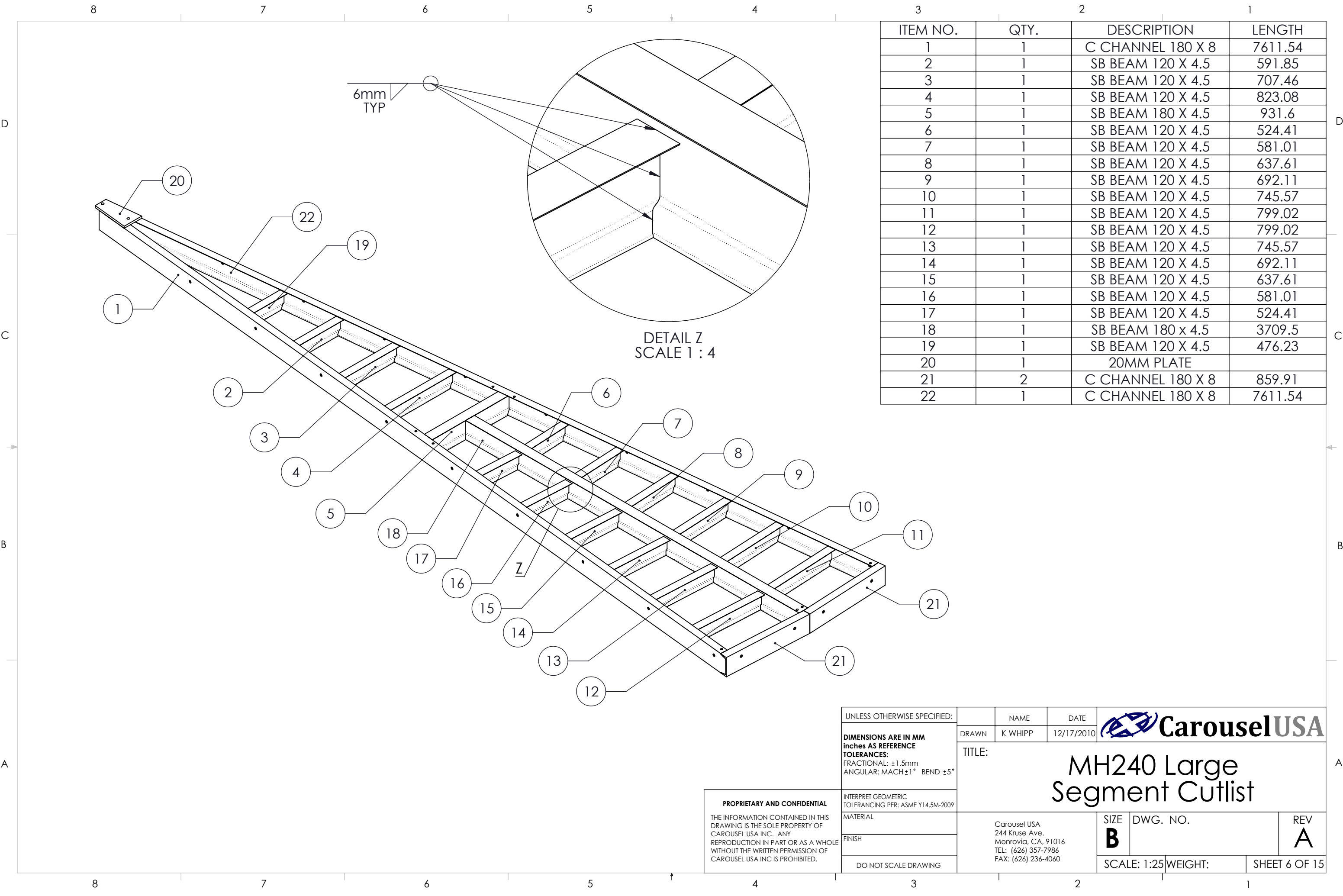
DETAIL Y
SCALE 1 : 4

PROPRIETARY AND CONFIDENTIAL
THE INFORMATION CONTAINED IN THIS
DRAWING IS THE SOLE PROPERTY OF
CAROUSEL USA INC.. ANY
REPRODUCTION IN PART OR AS A WHOLE
WITHOUT THE WRITTEN PERMISSION OF
CAROUSEL USA INC IS PROHIBITED.

| | | | | | | |
|--|---|---------|------------|--|----------|-----------------|
| UNLESS OTHERWISE SPECIFIED: | | NAME | DATE |  CarouselUSA | | |
| DIMENSIONS ARE IN MM inches AS REFERENCE TOLERANCES: FRACTIONAL: ±1.5mm ANGULAR: MACH±1° BEND ±5° | DRAWN | K WHIPP | 12/17/2010 | TITLE: MH240 Small Segment Cutlist | | |
| | | | | | | |
| | | | | | | |
| INTERPRET GEOMETRIC TOLERANCING PER: ASME Y14.5M-2009 | Carousel USA 244 Kruse Ave. Monrovia, CA, 91016 TEL: (626) 357-7986 FAX: (626) 236-4060 | | | SIZE B | DWG. NO. | REV A |
| MATERIAL | | | | | | |
| FINISH | | | | | | |
| DO NOT SCALE DRAWING | | | | SCALE: 1:25 | WEIGHT: | SHEET 4 OF 15 |



| | | | | | | | |
|--|---|---------|------------|--|----------|---------|---------------|
| UNLESS OTHERWISE SPECIFIED: | | NAME | DATE |  CarouselUSA | | | |
| DIMENSIONS ARE IN MM inches AS REFERENCE TOLERANCES: FRACTIONAL: ±1.5mm ANGULAR: MACH±1° BEND ±5° | DRAWN | K WHIPP | 12/17/2010 | <div>TITLE:</div> <div>MH240 Small Segment Details</div> | | | |
| INTERPRET GEOMETRIC TOLERANCING PER: ASME Y14.5M-2009 | | | | | | | |
| MATERIAL | | | | | | | |
| FINISH | Carousel USA 244 Kruse Ave. Monrovia, CA, 91016 TEL: (626) 357-7986 FAX: (626) 236-4060 | | | SIZE | DWG. NO. | | REV |
| | | | | B | | | A |
| DO NOT SCALE DRAWING | | | | SCALE: 1:25 | | WEIGHT: | SHEET 5 OF 15 |



| ITEM NO. | QTY. | DESCRIPTION | LENGTH |
|----------|------|-------------------|---------|
| 1 | 1 | C CHANNEL 180 X 8 | 7611.54 |
| 2 | 1 | SB BEAM 120 X 4.5 | 591.85 |
| 3 | 1 | SB BEAM 120 X 4.5 | 707.46 |
| 4 | 1 | SB BEAM 120 X 4.5 | 823.08 |
| 5 | 1 | SB BEAM 180 X 4.5 | 931.6 |
| 6 | 1 | SB BEAM 120 X 4.5 | 524.41 |
| 7 | 1 | SB BEAM 120 X 4.5 | 581.01 |
| 8 | 1 | SB BEAM 120 X 4.5 | 637.61 |
| 9 | 1 | SB BEAM 120 X 4.5 | 692.11 |
| 10 | 1 | SB BEAM 120 X 4.5 | 745.57 |
| 11 | 1 | SB BEAM 120 X 4.5 | 799.02 |
| 12 | 1 | SB BEAM 120 X 4.5 | 799.02 |
| 13 | 1 | SB BEAM 120 X 4.5 | 745.57 |
| 14 | 1 | SB BEAM 120 X 4.5 | 692.11 |
| 15 | 1 | SB BEAM 120 X 4.5 | 637.61 |
| 16 | 1 | SB BEAM 120 X 4.5 | 581.01 |
| 17 | 1 | SB BEAM 120 X 4.5 | 524.41 |
| 18 | 1 | SB BEAM 180 x 4.5 | 3709.5 |
| 19 | 1 | SB BEAM 120 X 4.5 | 476.23 |
| 20 | 1 | 20MM PLATE | |
| 21 | 2 | C CHANNEL 180 X 8 | 859.91 |
| 22 | 1 | C CHANNEL 180 X 8 | 7611.54 |

UNLESS OTHERWISE SPECIFIED:

DIMENSIONS ARE IN MM
inches AS REFERENCE

TOLERANCES:
FRACTIONAL: ±1.5mm
ANGULAR: MACH±1° BEND ±5°

PROPRIETARY AND CONFIDENTIAL

THE INFORMATION CONTAINED IN THIS
DRAWING IS THE SOLE PROPERTY OF
CAROUSEL USA INC. ANY
REPRODUCTION IN PART OR AS A WHOLE
WITHOUT THE WRITTEN PERMISSION OF
CAROUSEL USA INC IS PROHIBITED.

INTERPRET GEOMETRIC
TOLERANCING PER: ASME Y14.5M-2009

MATERIAL

FINISH

DO NOT SCALE DRAWING

DRAWN

K WHIPP

DATE

12/17/2010

TITLE:

MH240 Large
Segment Cutlist

Carousel USA
244 Kruse Ave.
Monrovia, CA, 91016
TEL: (626) 357-7986
FAX: (626) 236-4060

SIZE

B

DWG. NO.

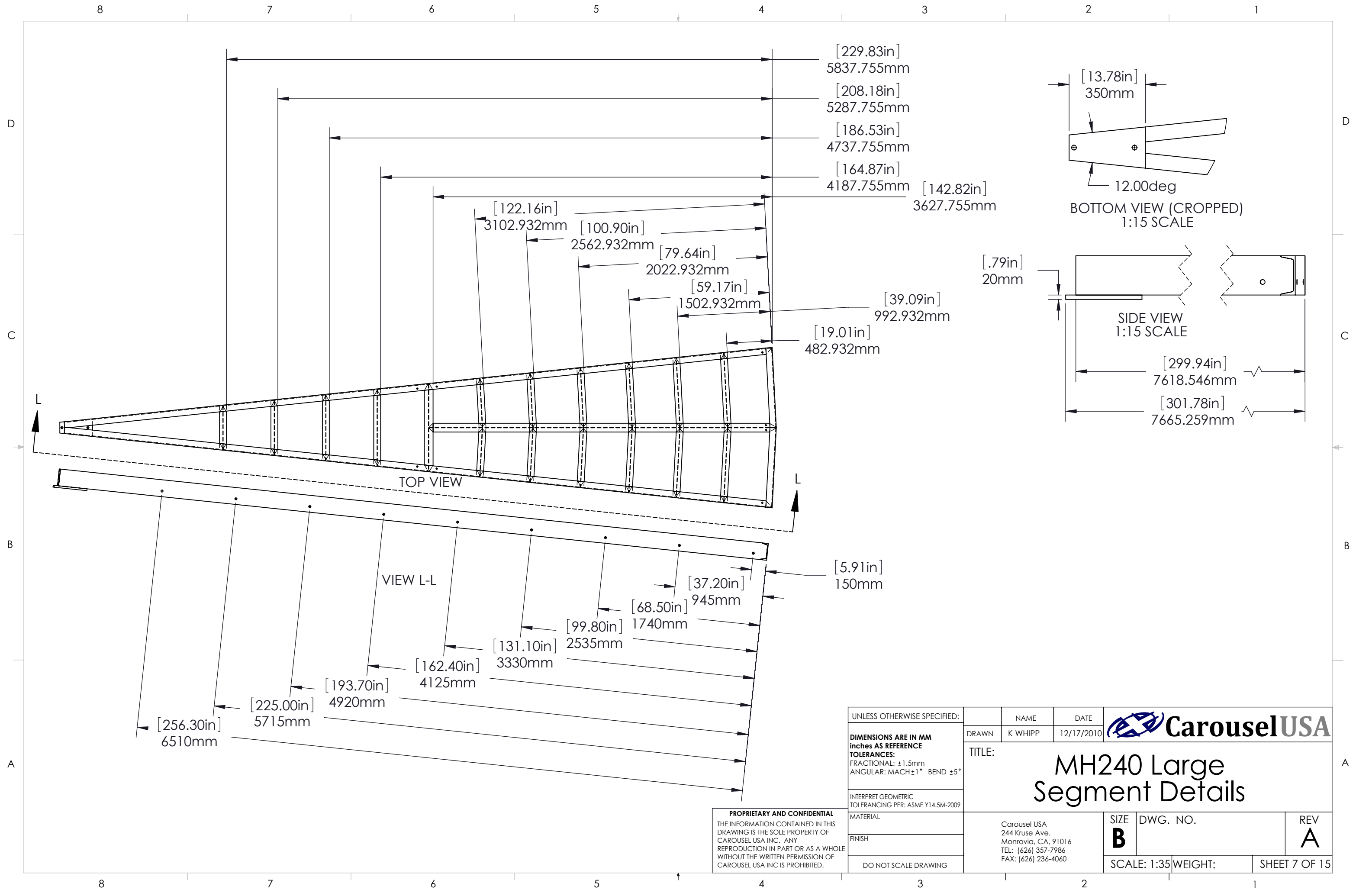
REV

A


SCALE: 1:25

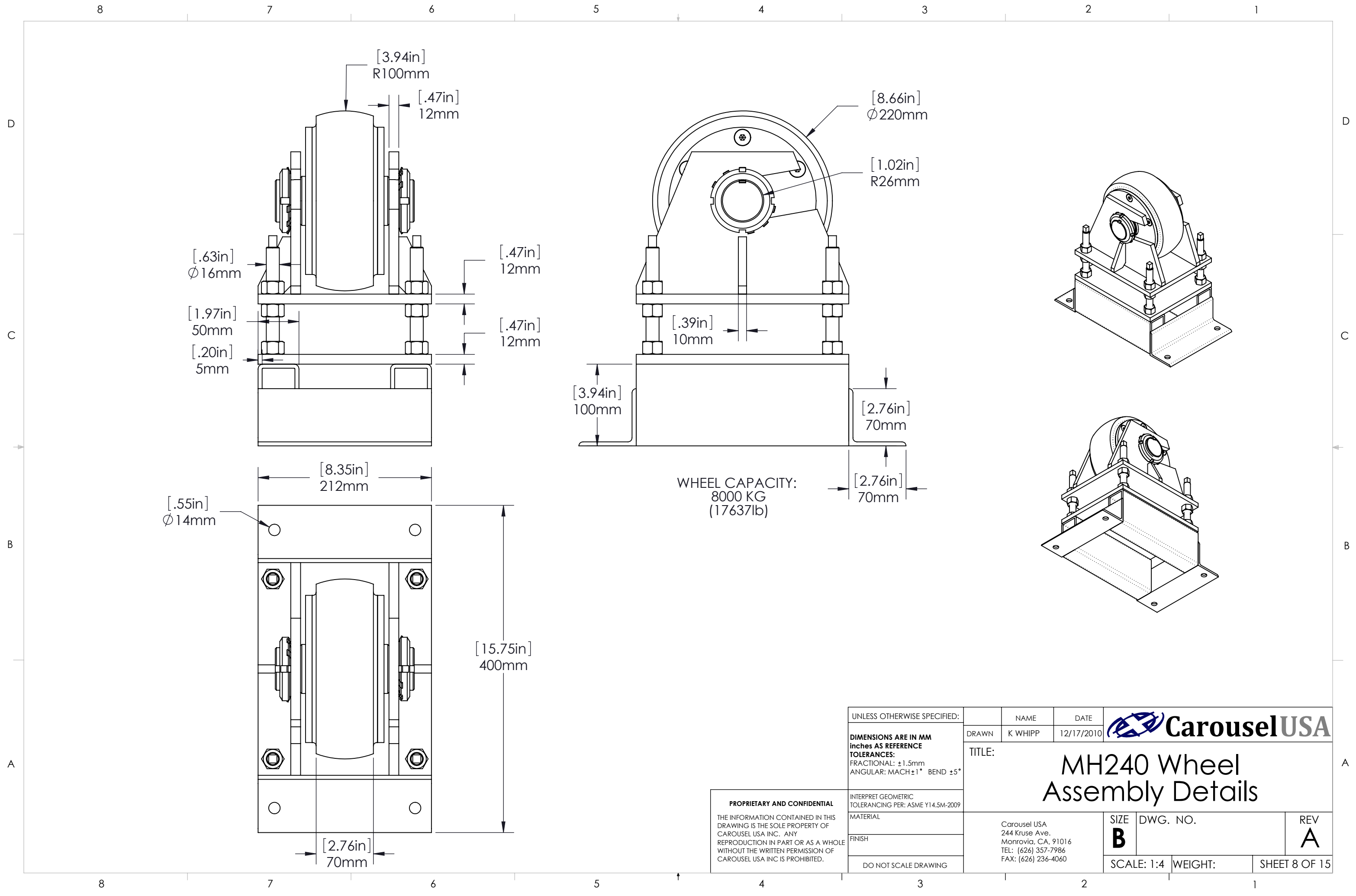
WEIGHT:

SHEET 6 OF 15




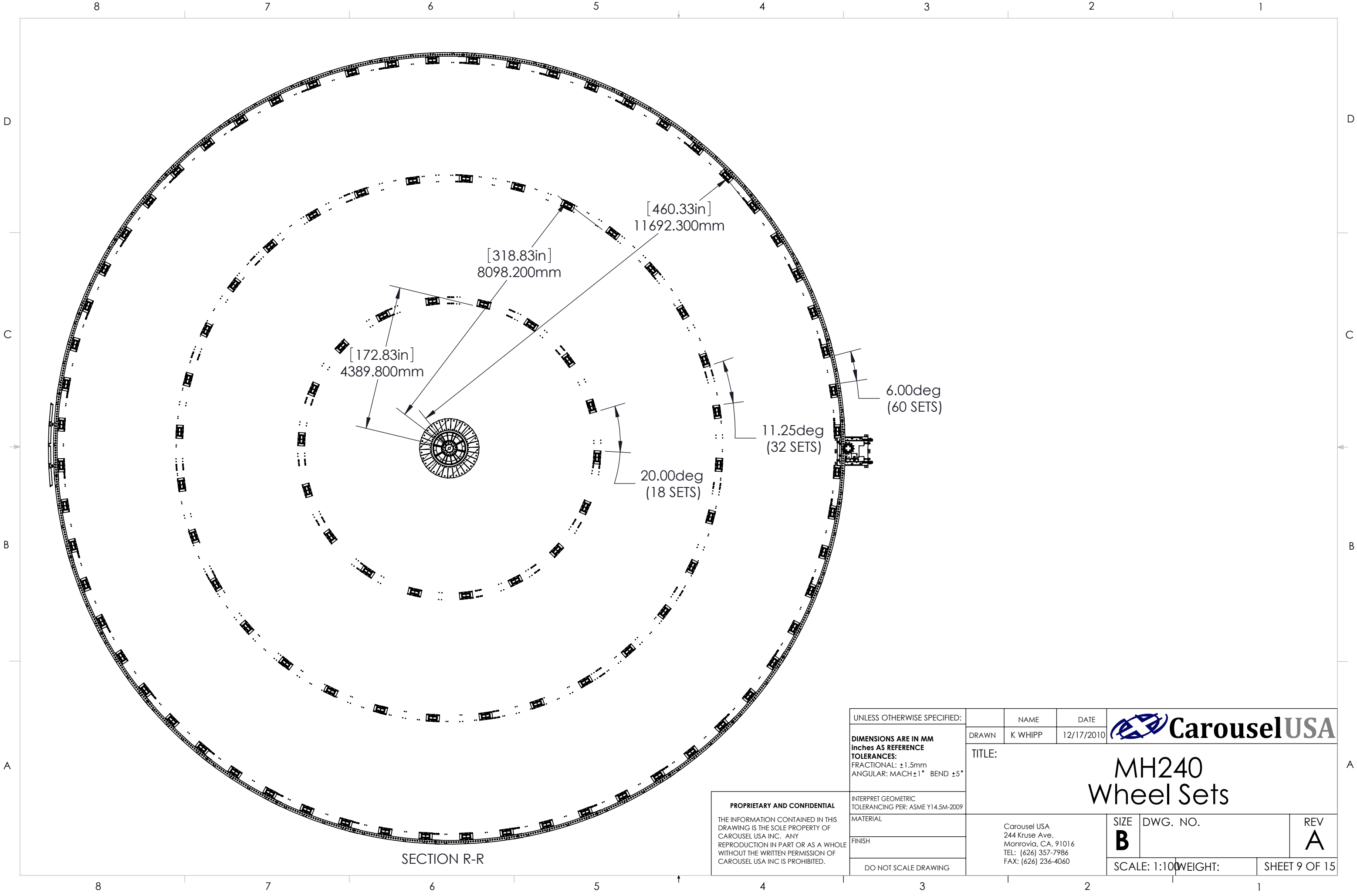
PROPRIETARY AND CONFIDENTIAL
THE INFORMATION CONTAINED IN THIS DRAWING IS THE SOLE PROPERTY OF CAROUSEL USA INC. ANY REPRODUCTION IN PART OR AS A WHOLE WITHOUT THE WRITTEN PERMISSION OF CAROUSEL USA INC IS PROHIBITED.

| | | | | | | | |
|--|---|---------|------------|--|----------|---------|---------------|
| UNLESS OTHERWISE SPECIFIED: | | NAME | DATE |  CarouselUSA | | | |
| DIMENSIONS ARE IN MM inches AS REFERENCE TOLERANCES: FRACTIONAL: ±1.5mm ANGULAR: MACH±1° BEND ±5° | DRAWN | K WHIPP | 12/17/2010 | TITLE: MH240 Large Segment Details | | | |
| | | | | | | | |
| INTERPRET GEOMETRIC TOLERANCING PER: ASME Y14.5M-2009 | | | | | | | |
| MATERIAL | Carousel USA 244 Kruse Ave. Monrovia, CA. 91016 TEL: (626) 357-7986 FAX: (626) 236-4060 | | | SIZE | DWG. NO. | | REV |
| FINISH | | | | B | | | A |
| DO NOT SCALE DRAWING | | | | SCALE: 1:35 | | WEIGHT: | SHEET 7 OF 15 |




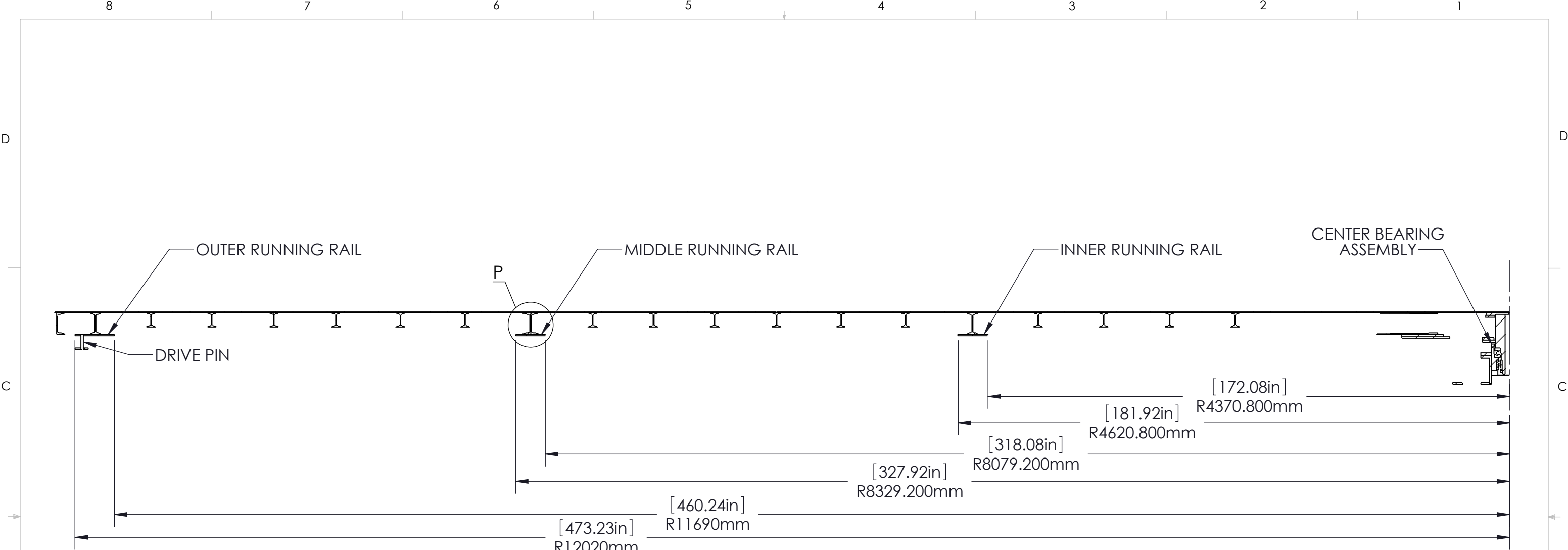
PROPRIETARY AND CONFIDENTIAL
THE INFORMATION CONTAINED IN THIS
DRAWING IS THE SOLE PROPERTY OF
CAROUSEL USA INC.. ANY
REPRODUCTION IN PART OR AS A WHOLE
WITHOUT THE WRITTEN PERMISSION OF
CAROUSEL USA INC IS PROHIBITED.

| | | | | | | |
|---|---|---------|------------|--|----------|-----------------|
| UNLESS OTHERWISE SPECIFIED: | | NAME | DATE |  CarouselUSA | | |
| DIMENSIONS ARE IN MM inches AS REFERENCE TOLERANCES: FRACTIONAL: ±1.5mm ANGULAR: MACH±1° BEND ±5° | DRAWN | K WHIPP | 12/17/2010 | TITLE: MH240 Wheel Assembly Details | | |
| | | | | | | |
| | | | | | | |
| INTERPRET GEOMETRIC TOLERANCING PER: ASME Y14.5M-2009 | | | | | | |
| MATERIAL | Carousel USA 244 Kruse Ave. Monrovia, CA, 91016 TEL: (626) 357-7986 FAX: (626) 236-4060 | | | SIZE B | DWG. NO. | REV A |
| FINISH | | | | | | |
| DO NOT SCALE DRAWING | | | | SCALE: 1:4 | WEIGHT: | SHEET 8 OF 15 |

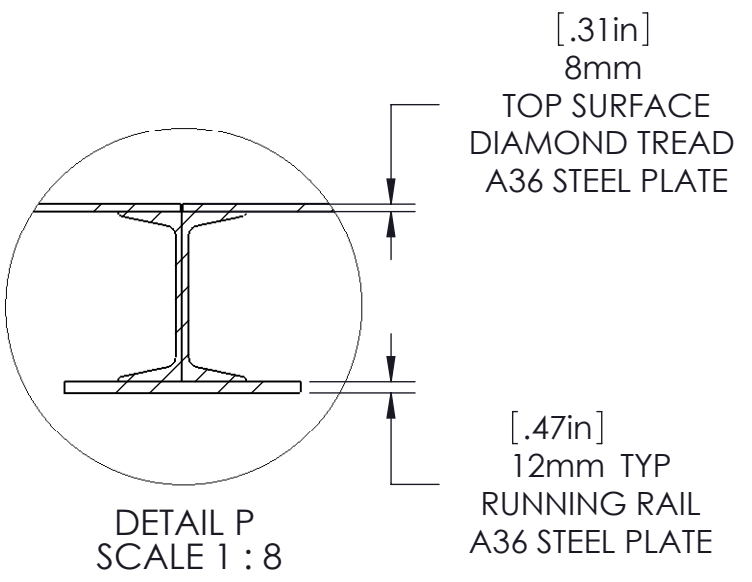


PROPRIETARY AND CONFIDENTIAL
THE INFORMATION CONTAINED IN THIS
DRAWING IS THE SOLE PROPERTY OF
CAROUSEL USA INC. ANY
REPRODUCTION IN PART OR AS A WHOLE
WITHOUT THE WRITTEN PERMISSION OF
CAROUSEL USA INC IS PROHIBITED.

| | | | | | | |
|---|---|---------|------------|--|----------|-----------------|
| UNLESS OTHERWISE SPECIFIED: | | NAME | DATE |  CarouselUSA | | |
| DIMENSIONS ARE IN MM inches AS REFERENCE TOLERANCES: FRACTIONAL: ±1.5mm ANGULAR: MACH±1° BEND ±5° | DRAWN | K WHIPP | 12/17/2010 | TITLE: MH240 Wheel Sets | | |
| | | | | | | |
| INTERPRET GEOMETRIC TOLERANCING PER: ASME Y14.5M-2009 | | | | | | |
| MATERIAL | Carousel USA 244 Kruse Ave. Monrovia, CA, 91016 TEL: (626) 357-7986 FAX: (626) 236-4060 | | | SIZE B | DWG. NO. | REV A |
| FINISH | | | | | | |
| DO NOT SCALE DRAWING | | | | SCALE: 1:100 | WEIGHT: | SHEET 9 OF 15 |




SECTION N-N



PROPRIETARY AND CONFIDENTIAL
THE INFORMATION CONTAINED IN THIS DRAWING IS THE SOLE PROPERTY OF CAROUSEL USA INC.. ANY REPRODUCTION IN PART OR AS A WHOLE WITHOUT THE WRITTEN PERMISSION OF CAROUSEL USA INC IS PROHIBITED.

| |
|--|
| UNLESS OTHERWISE SPECIFIED: |
| DIMENSIONS ARE IN MM inches AS REFERENCE |
| TOLERANCES: |
| FRACTIONAL: $\pm 1.5\text{mm}$ |
| ANGULAR: MACH $\pm 1^\circ$ BEND $\pm 5^\circ$ |
| INTERPRET GEOMETRIC TOLERANCING PER: ASME Y14.5M-2009 |
| MATERIAL |
| FINISH |
| DO NOT SCALE DRAWING |

| | | | | |
|------------------|-----------------|--------------------|--|-----------------|
| DRAWN | NAME K WHIPP | DATE 12/17/2010 |  CarouselUSA | |
| TITLE: | | | MH240 Running Rail Details | |
| SIZE B | | DWG. NO. | | REV A |
| SCALE: 1:32 | | WEIGHT: | | SHEET 10 OF 15 |

8

7

6

5

4

3

2

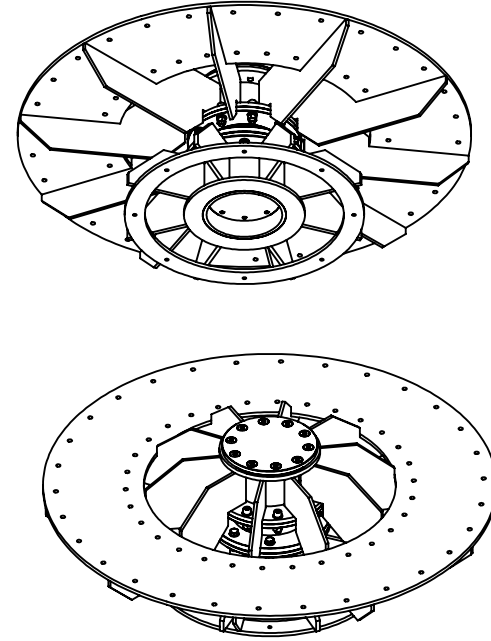
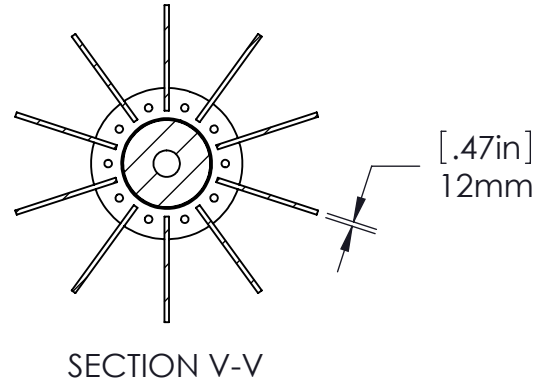
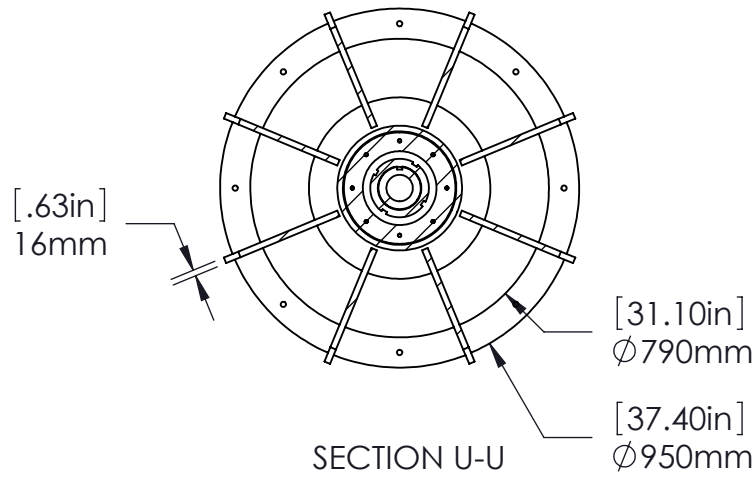
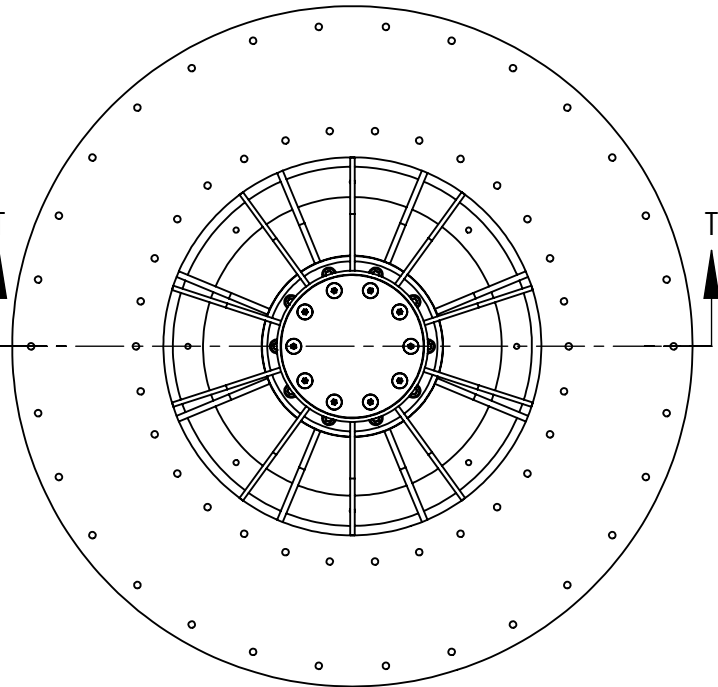
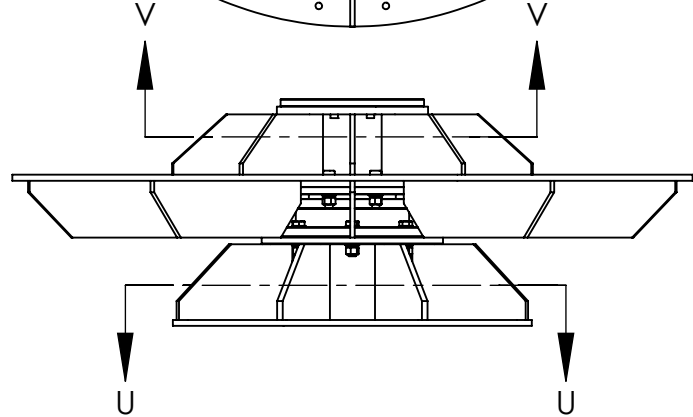
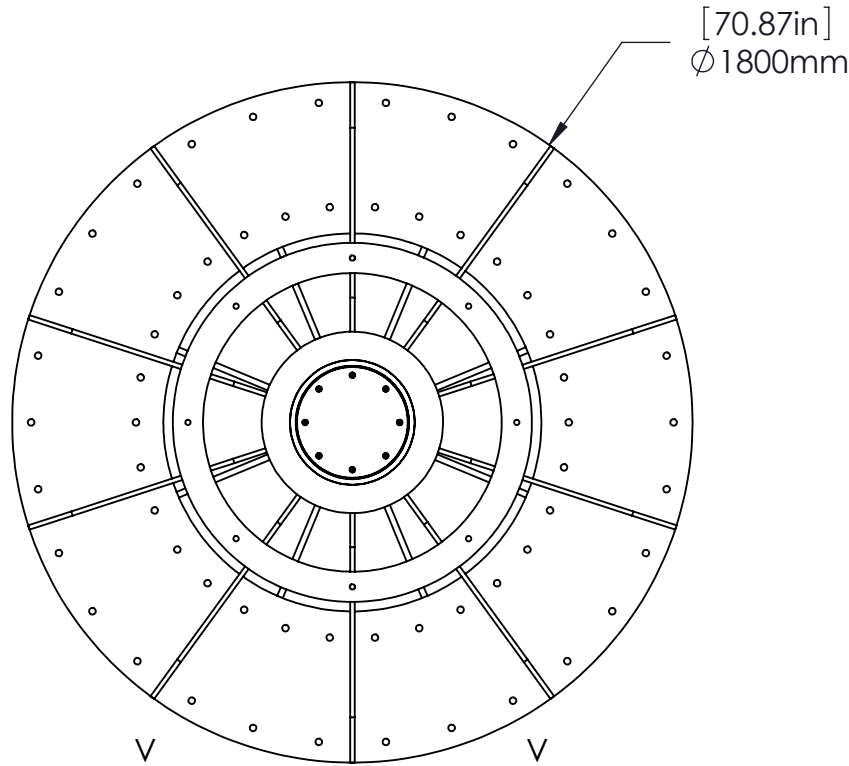
1

D

C

B

A

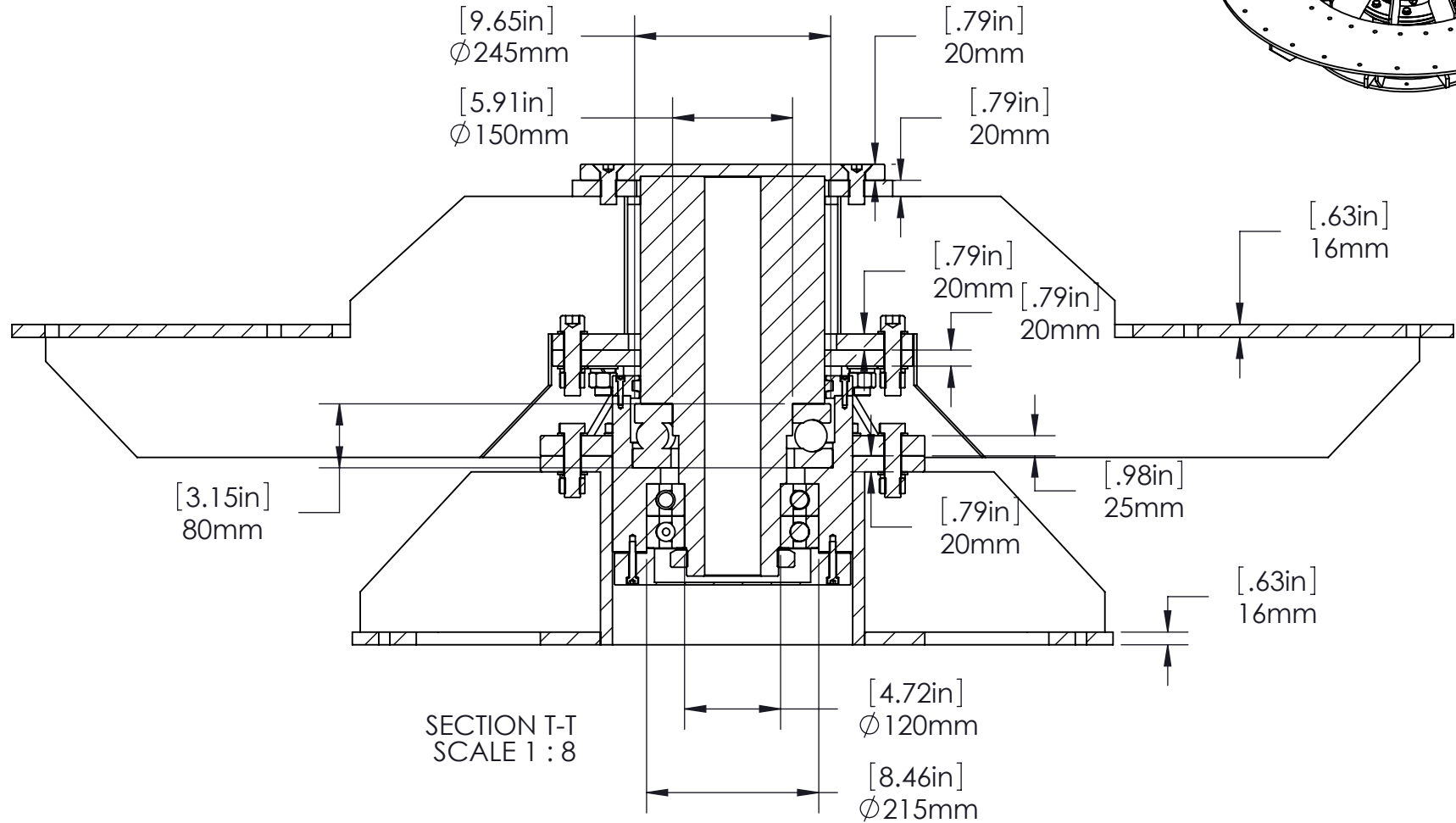


D


C

B

A



SECTION T-T
SCALE 1 : 8

| | | | | | | | |
|---|-------|---|------------|--|-------------|----------|----------|
| UNLESS OTHERWISE SPECIFIED: | | NAME | DATE |  CarouselUSA | | | |
| DIMENSIONS ARE IN MM inches AS REFERENCE TOLERANCES: FRACTIONAL: $\pm 1.5\text{mm}$ ANGULAR: MACH $\pm 1^\circ$ BEND $\pm 5^\circ$ | DRAWN | K WHIPP | 12/17/2010 | TITLE: MH240 Center Bearing Details | | | |
| | | | | | | | |
| INTERPRET GEOMETRIC TOLERANCING PER: ASME Y14.5M-2009 | | Carousel USA 244 Kruse Ave. Monrovia, CA, 91016 TEL: (626) 357-7986 FAX: (626) 236-4060 | | | SIZE | DWG. NO. | REV |
| MATERIAL | | | | | B | | A |
| FINISH | | | | | | | |
| DO NOT SCALE DRAWING | | | | | SCALE: 1:20 | | |

8

7

6

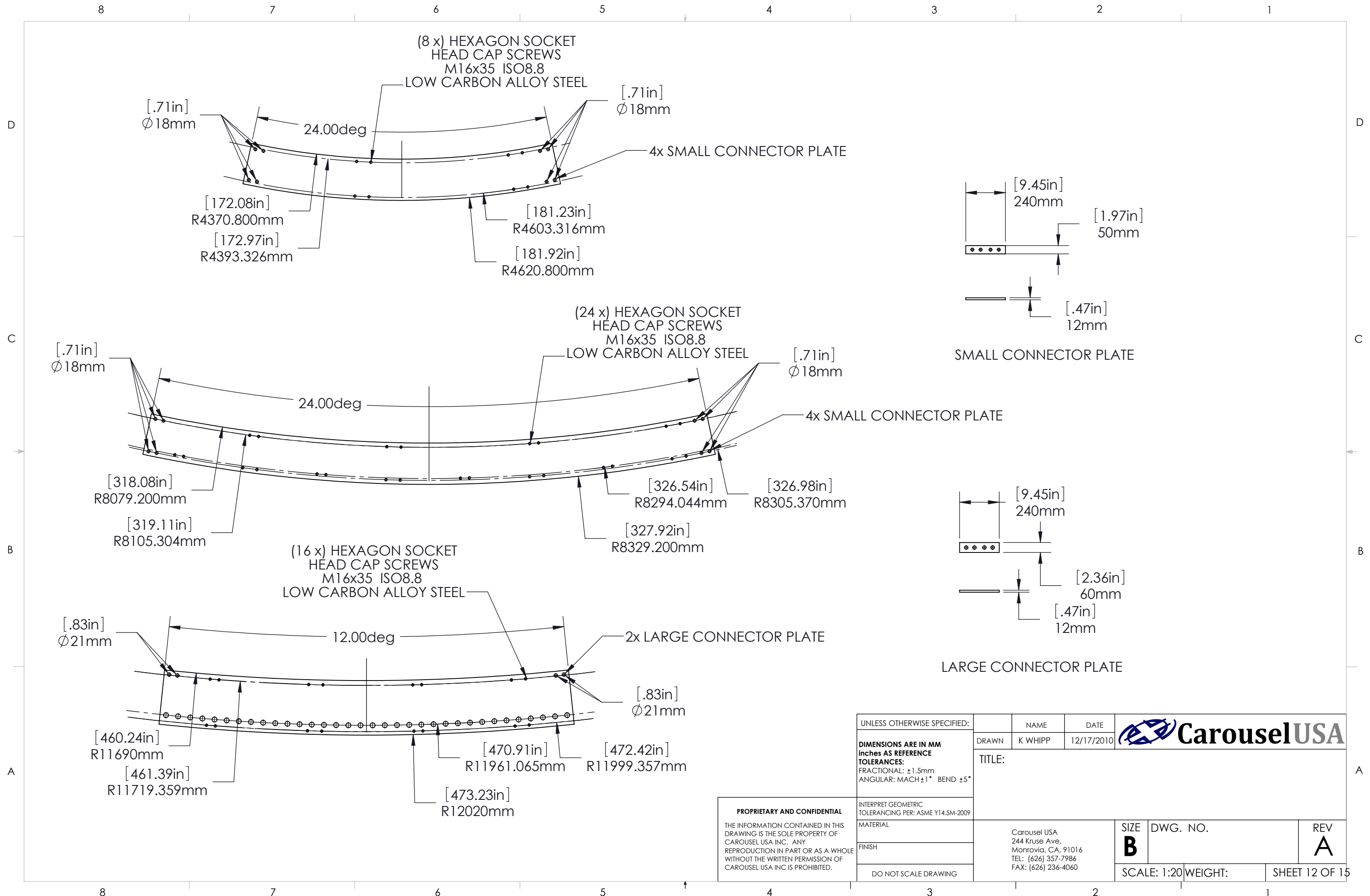
5


4

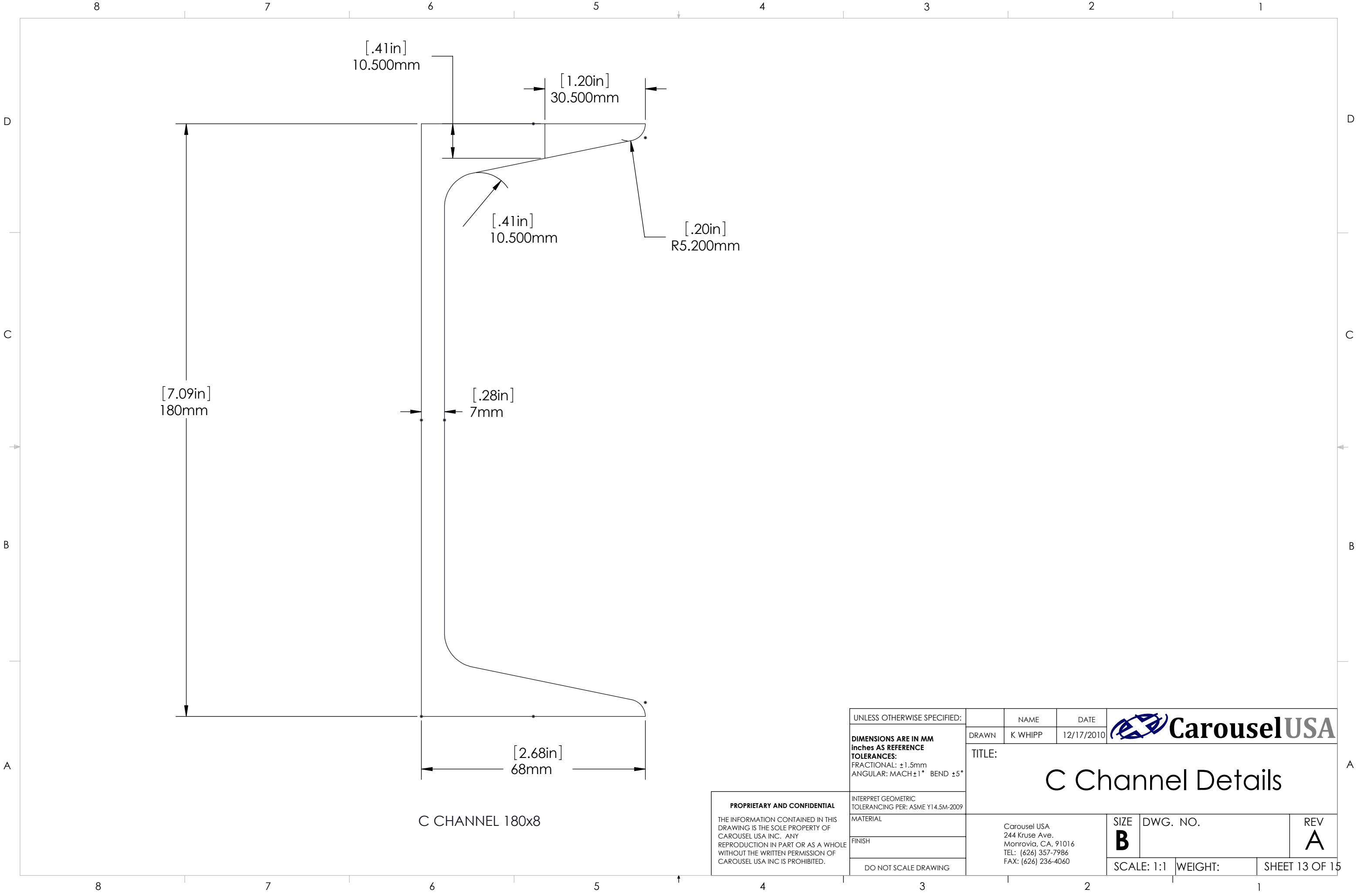
3

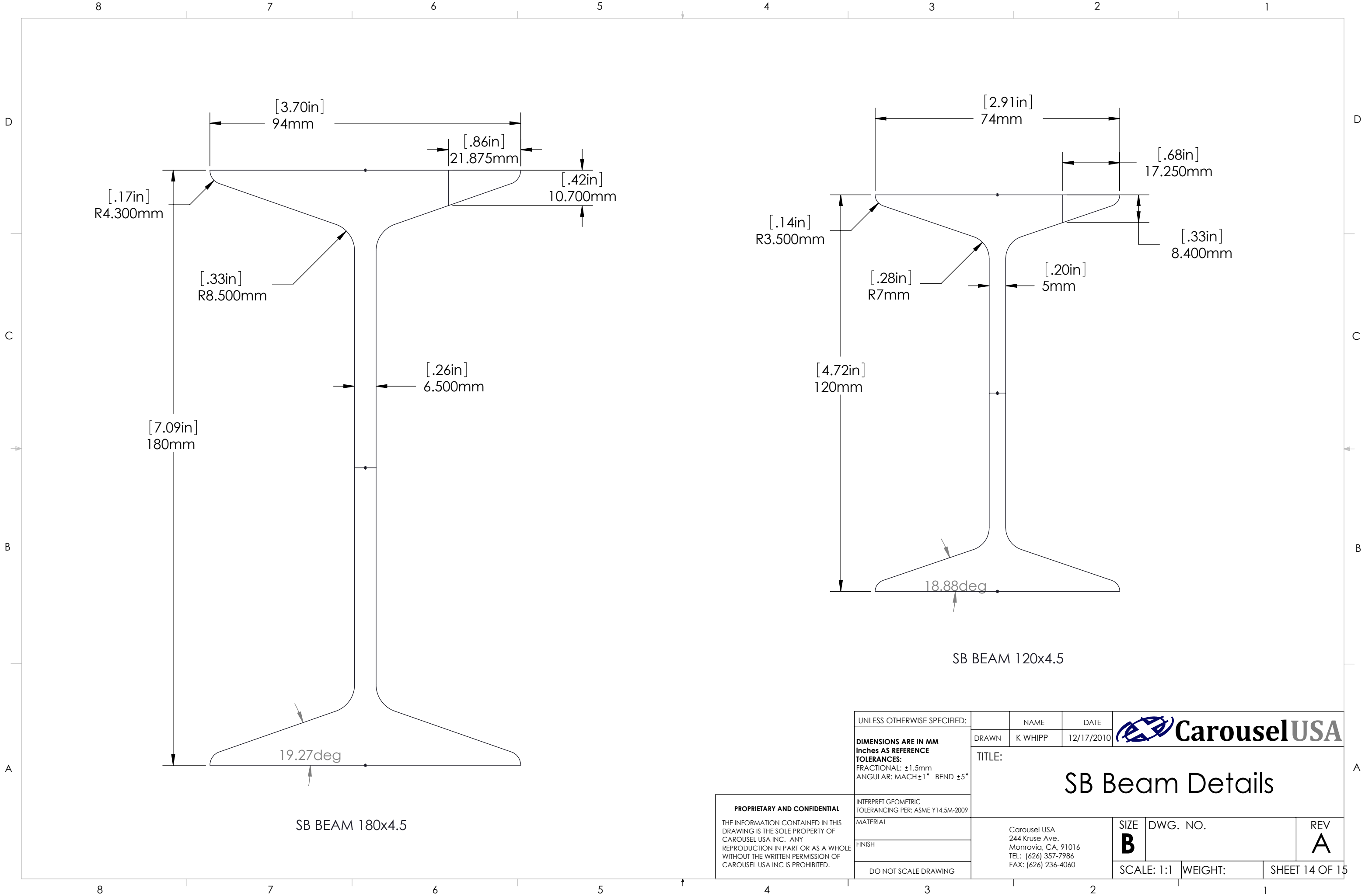
2

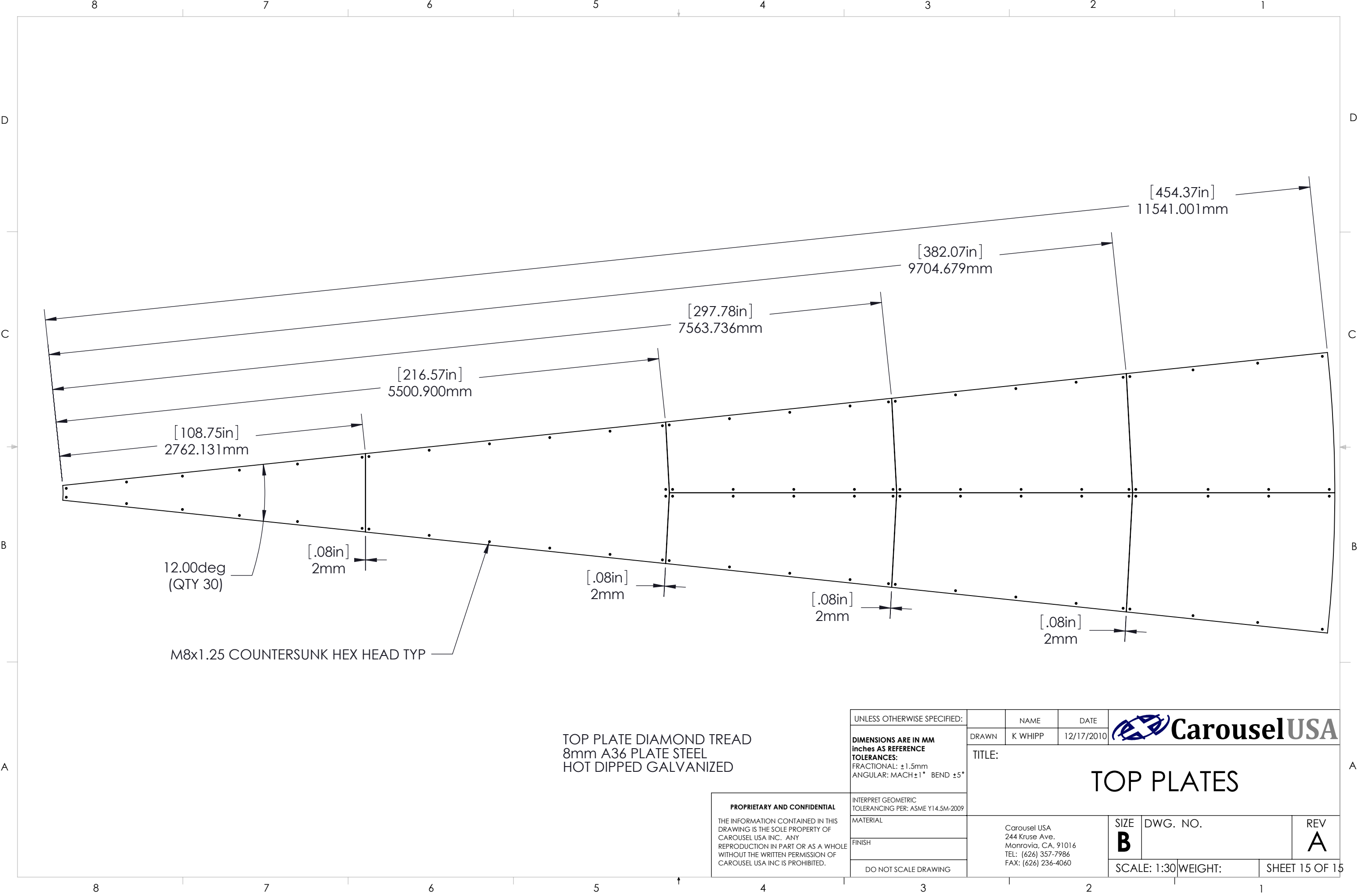
1



| | | | | | | | | | |
|--|--|---|---------|--|----------|----------|-------------|-----|----------------------|
| UNLESS OTHERWISE SPECIFIED: | | NAME | DATE |  CarouselUSA | | | | | |
| DIMENSIONS ARE IN MM inches AS REFERENCE TOLERANCES: FRACTIONAL: ±1.5mm ANGULAR: MACH±1° BEND ±5° | | DRAWN | K WHIPP | | | | 12/17/2010 | | |
| | | TITLE: | | | | | | | |
| | | | | | | | | | |
| | | | | | | | | | |
| INTERPRET GEOMETRIC TOLERANCING PER: ASME Y14.5M-2009 | | Carousel USA 244 Kruse Ave. Monrovia, CA, 91016 TEL: (626) 357-7986 FAX: (626) 236-4060 | | | SIZE | DWG. NO. | | REV | |
| MATERIAL | | | | | B | | | | |
| | | | | | FINISH | | SCALE: 1:20 | | |
| | | | | | | | | | DO NOT SCALE DRAWING |








TOP PLATE DIAMOND TREAD
8mm A36 PLATE STEEL
HOT DIPPED GALVANIZED

PROPRIETARY AND CONFIDENTIAL
THE INFORMATION CONTAINED IN THIS
DRAWING IS THE SOLE PROPERTY OF
CAROUSEL USA INC. ANY
REPRODUCTION IN PART OR AS A WHOLE
WITHOUT THE WRITTEN PERMISSION OF
CAROUSEL USA INC IS PROHIBITED.

| | | | | | | | |
|---|---|---------|------------|--|----------|---------|----------------|
| UNLESS OTHERWISE SPECIFIED: | | NAME | DATE |  CarouselUSA | | | |
| DIMENSIONS ARE IN MM inches AS REFERENCE TOLERANCES: FRACTIONAL: ±1.5mm ANGULAR: MACH±1° BEND ±5° | DRAWN | K WHIPP | 12/17/2010 | TITLE: TOP PLATES | | | |
| | | | | | | | |
| | | | | | | | |
| INTERPRET GEOMETRIC TOLERANCING PER: ASME Y14.5M-2009 | Carousel USA 244 Kruse Ave. Monrovia, CA, 91016 TEL: (626) 357-7986 FAX: (626) 236-4060 | | | SIZE | DWG. NO. | | REV |
| MATERIAL | | | | B | | | |
| FINISH | | | | | | | |
| DO NOT SCALE DRAWING | | | | SCALE: 1:30 | | WEIGHT: | SHEET 15 OF 15 |