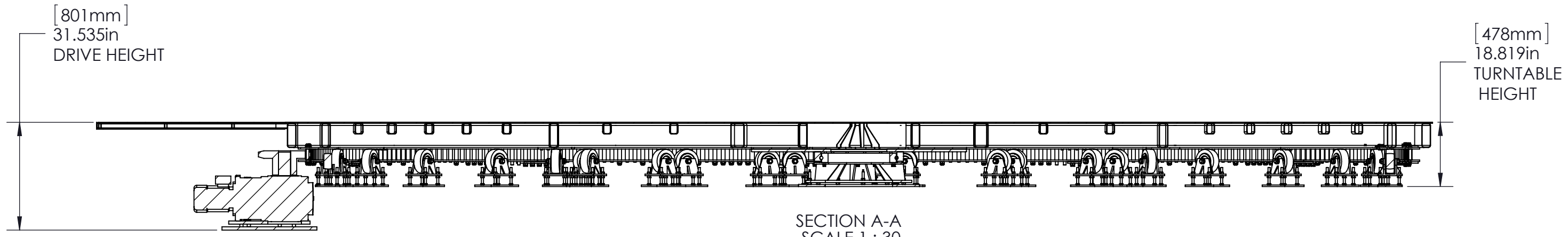
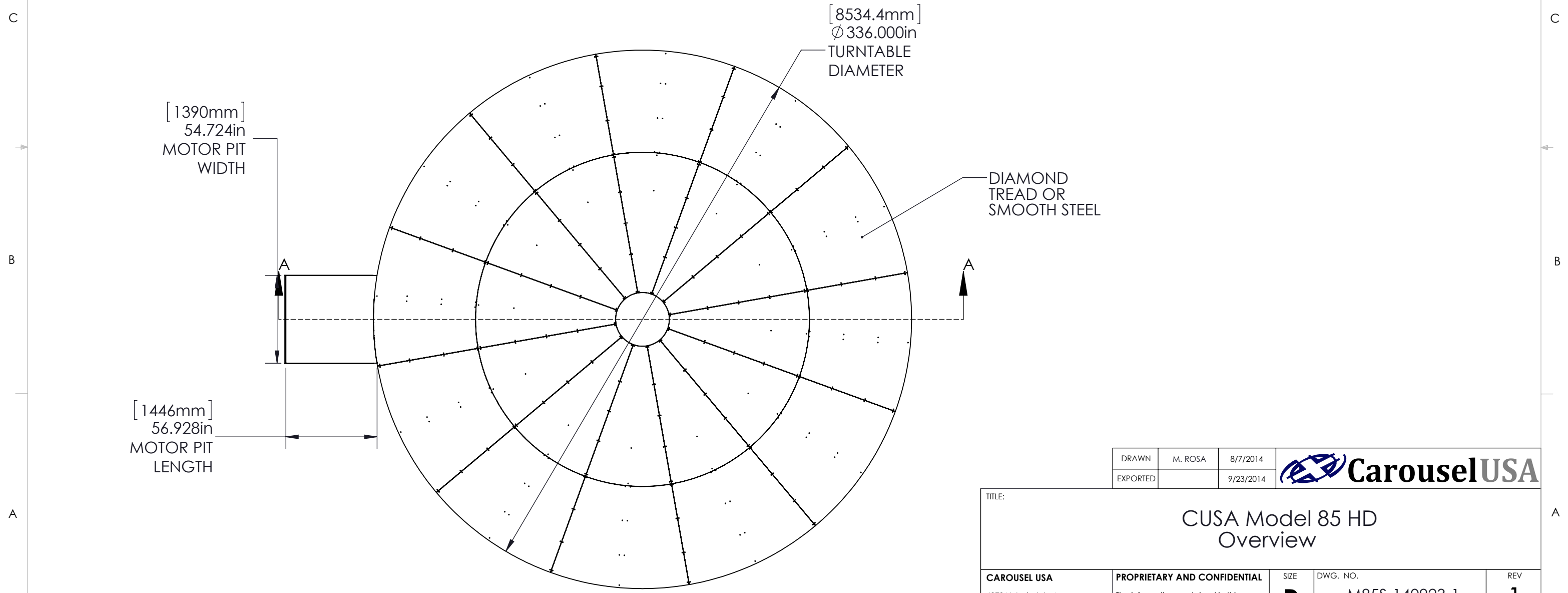


8 7 6 5 4 3 2 1



SECTION A-A
SCALE 1 : 30



[8534.4mm]
Ø 336.000in
TURNTABLE
DIAMETER

DIAMOND
TREAD OR
SMOOTH STEEL

[1390mm]
54.724in
MOTOR PIT
WIDTH

[1446mm]
56.928in
MOTOR PIT
LENGTH

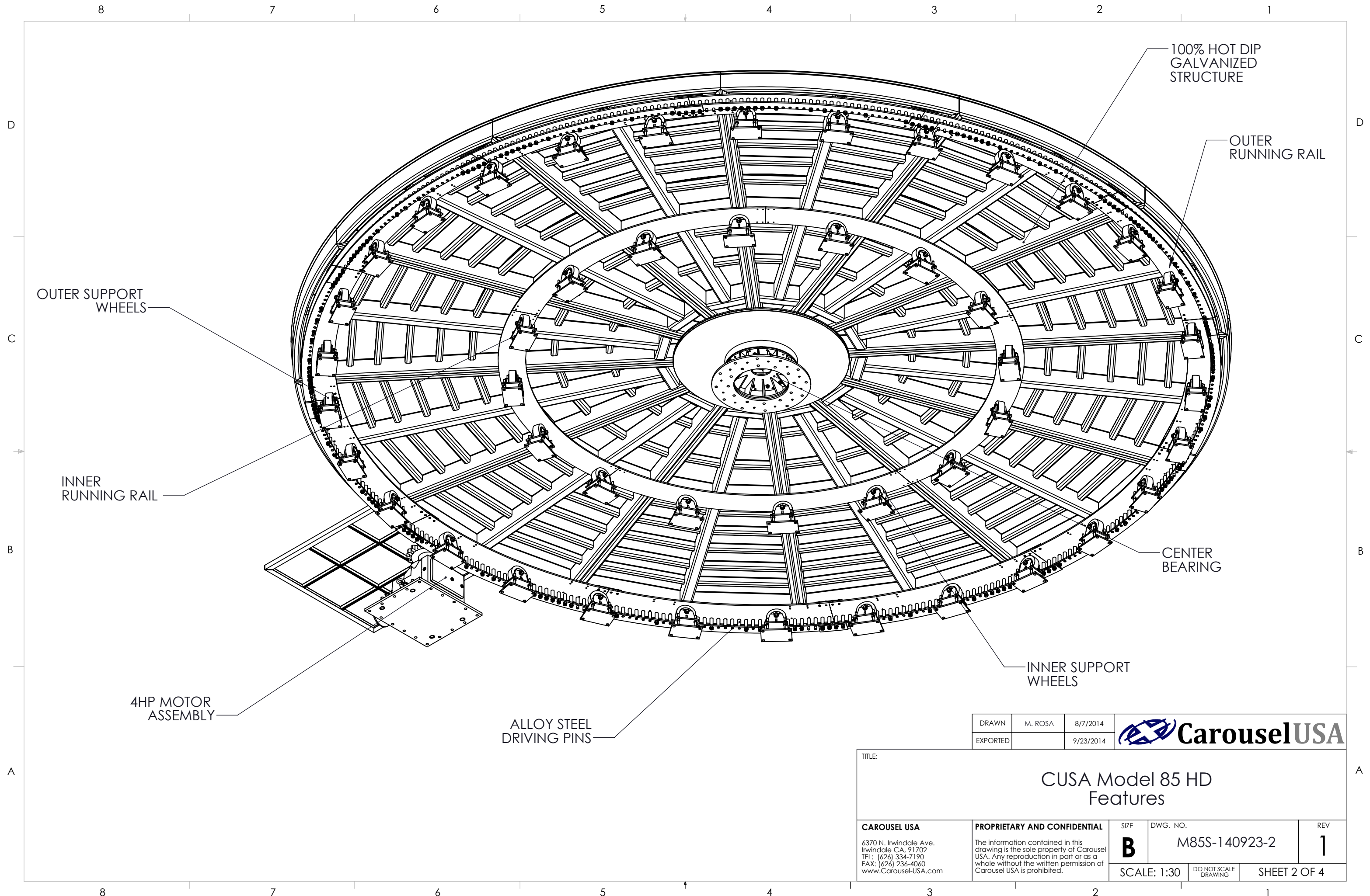
DRAWN	M. ROSA	8/7/2014
EXPORTED		9/23/2014



TITLE:
**CUSA Model 85 HD
Overview**

CAROUSEL USA 6370 N. Irwindale Ave. Irwindale CA, 91702 TEL: (626) 334-7190 FAX: (626) 236-4060 www.Carousel-USA.com	PROPRIETARY AND CONFIDENTIAL The information contained in this drawing is the sole property of Carousell USA. Any reproduction in part or as a whole without the written permission of Carousell USA is prohibited.	SIZE	DWG. NO.	REV
		B	M85S-140923-1	1
SCALE: 1:60		DO NOT SCALE DRAWING	SHEET 1 OF 4	

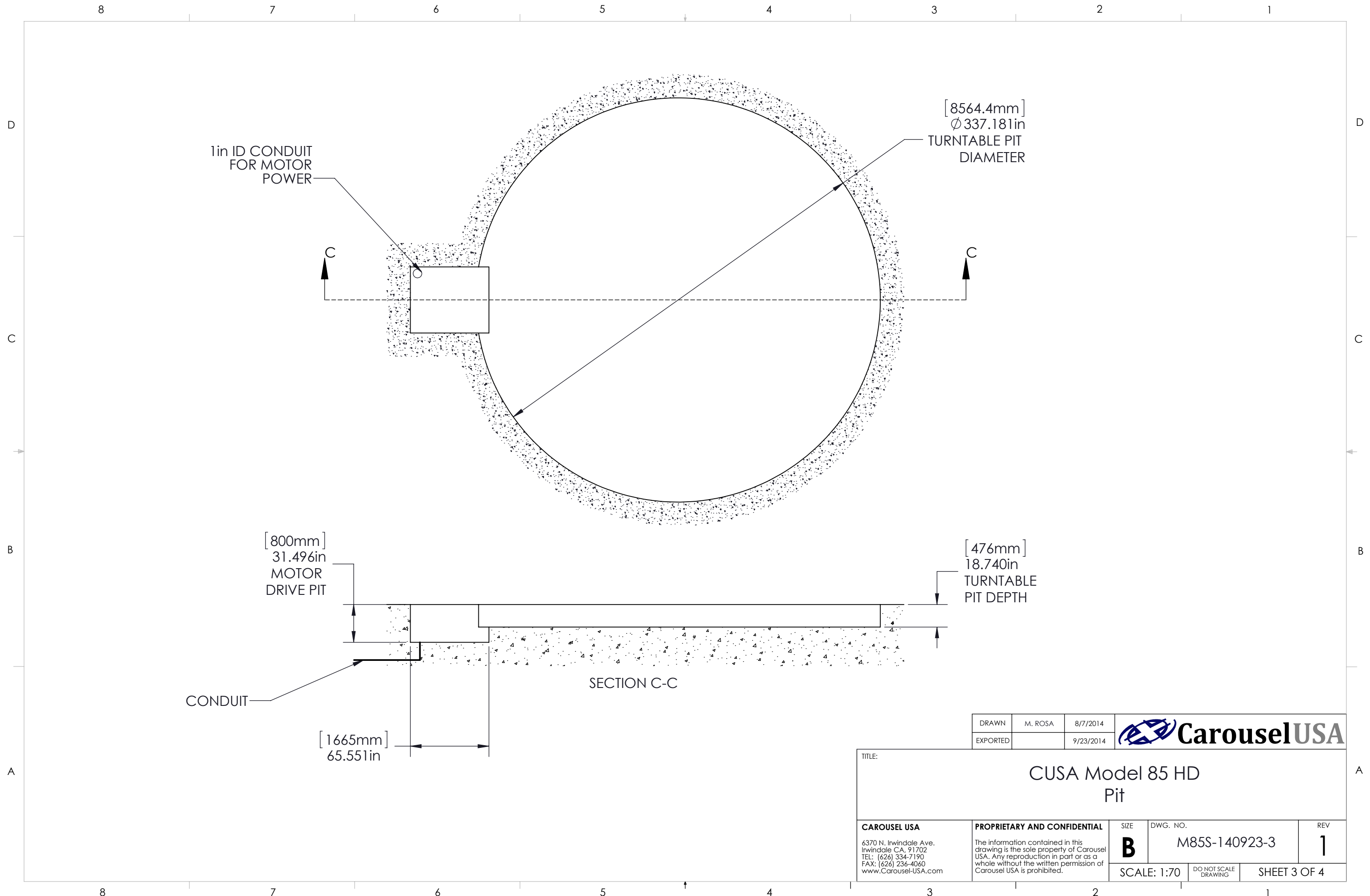
8 7 6 5 4 3 2 1



DRAWN	M. ROSA	8/7/2014
EXPORTED		9/23/2014



TITLE:			
CUSA Model 85 HD Features			
CAROUSEL USA 6370 N. Irwindale Ave. Irwindale CA, 91702 TEL: (626) 334-7190 FAX: (626) 236-4060 www.Carousel-USA.com	PROPRIETARY AND CONFIDENTIAL The information contained in this drawing is the sole property of Carousell USA. Any reproduction in part or as a whole without the written permission of Carousell USA is prohibited.	SIZE B	DWG. NO. M85S-140923-2
		SCALE: 1:30	DO NOT SCALE DRAWING
		SHEET 2 OF 4	
REV	1		



1in ID CONDUIT
FOR MOTOR
POWER

[8564.4mm]
Ø 337.181in
TURNTABLE PIT
DIAMETER

[800mm]
31.496in
MOTOR
DRIVE PIT

[476mm]
18.740in
TURNTABLE
PIT DEPTH

SECTION C-C

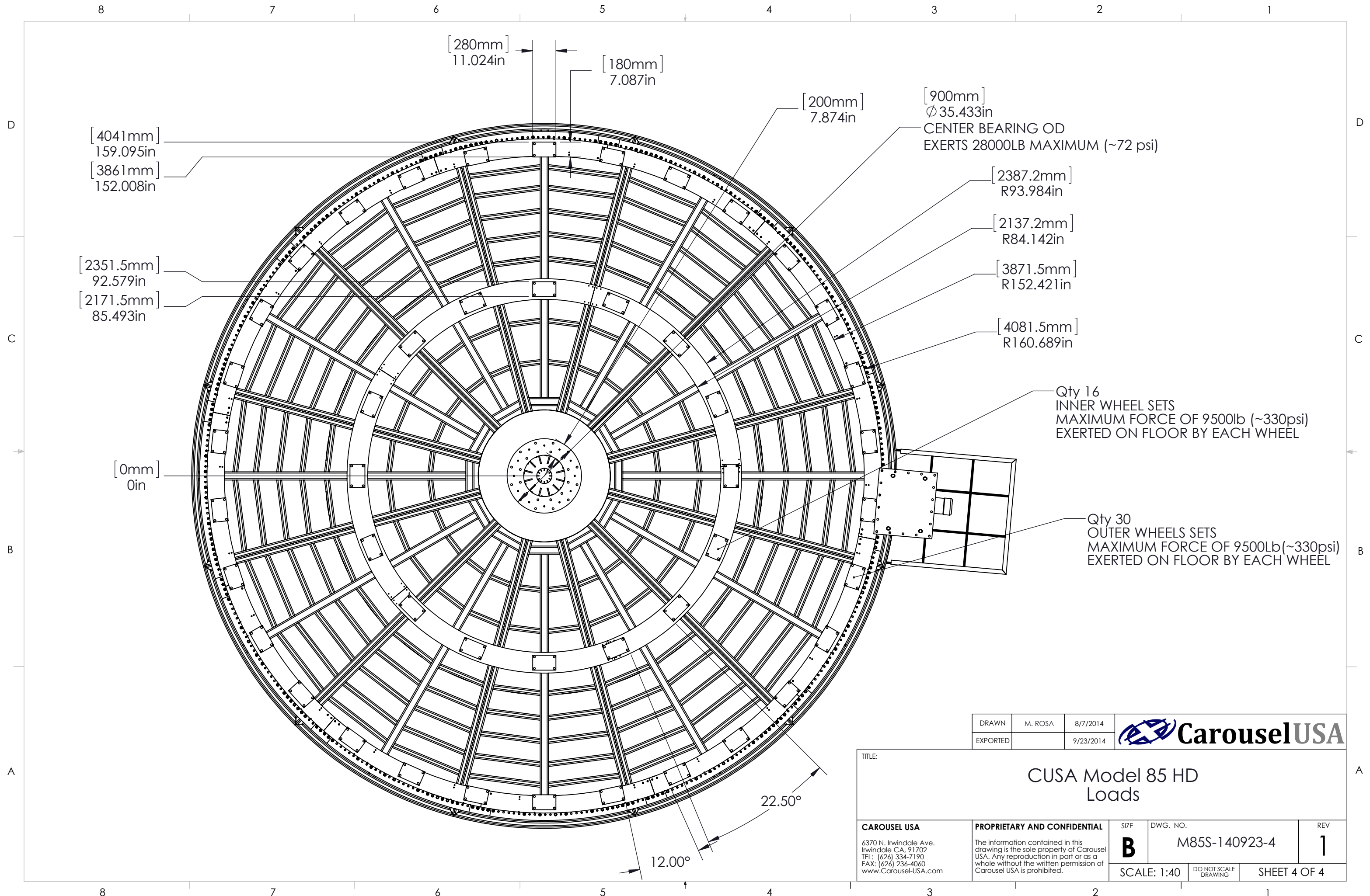
CONDUIT

[1665mm]
65.551in

DRAWN	M. ROSA	8/7/2014
EXPORTED		9/23/2014



TITLE: CUSA Model 85 HD Pit			
CAROUSEL USA 6370 N. Irwindale Ave. Irwindale CA, 91702 TEL: (626) 334-7190 FAX: (626) 236-4060 www.Carousel-USA.com	PROPRIETARY AND CONFIDENTIAL The information contained in this drawing is the sole property of Carousel USA. Any reproduction in part or as a whole without the written permission of Carousel USA is prohibited.	SIZE B	DWG. NO. M85S-140923-3
		SCALE: 1:70	DO NOT SCALE DRAWING
		SHEET 3 OF 4	



[4041mm]
159.095in
[3861mm]
152.008in

[2351.5mm]
92.579in
[2171.5mm]
85.493in

[0mm]
0in

[280mm]
11.024in
[180mm]
7.087in

[200mm]
7.874in

[900mm]
Ø 35.433in
CENTER BEARING OD
EXERTS 28000LB MAXIMUM (~72 psi)

[2387.2mm]
R93.984in

[2137.2mm]
R84.142in

[3871.5mm]
R152.421in

[4081.5mm]
R160.689in

Qty 16
INNER WHEEL SETS
MAXIMUM FORCE OF 9500lb (~330psi)
EXERTED ON FLOOR BY EACH WHEEL

Qty 30
OUTER WHEELS SETS
MAXIMUM FORCE OF 9500lb (~330psi)
EXERTED ON FLOOR BY EACH WHEEL

22.50°

12.00°

DRAWN	M. ROSA	8/7/2014
EXPORTED		9/23/2014



TITLE:
CUSA Model 85 HD
Loads

CAROUSEL USA 6370 N. Irwindale Ave. Irwindale CA, 91702 TEL: (626) 334-7190 FAX: (626) 236-4060 www.Carousel-USA.com	PROPRIETARY AND CONFIDENTIAL The information contained in this drawing is the sole property of Carousell USA. Any reproduction in part or as a whole without the written permission of Carousell USA is prohibited.	SIZE B	DWG. NO. M85S-140923-4	REV 1
		SCALE: 1:40	DO NOT SCALE DRAWING	SHEET 4 OF 4