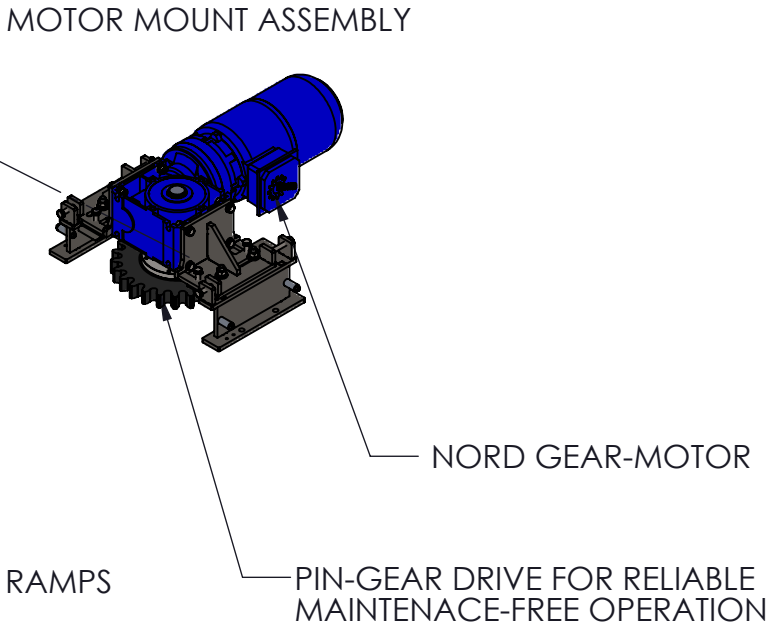


AVAILABLE TOP SURFACE MATERIAL AND THICKNESS	
	3/16" CARBON STEEL
	1/4" ALUMNUM
	3/16" STAINLESS STEEL

- NOTES:
1. TOP SURFACE TEXTURE SMOOTH OR DIAMOND TREAD
 2. TURNABLE SPEED: 0.2-1 RPM
 3. TURNABLE CAPACITY: 7,000 LB
 4. NORD MOTOR 1.5 HP 230/3/60 @ 4.5 FLA
 5. ASSEMBLED TURNABLE WEIGHT: 4,650 LBS



DESIGN BY:	M.CASTRO	11/10/2016
DRAWN BY:	M.CASTRO	2/17/2021



55SSV SURFACE MOUNTED TURNTABLE GENERAL ARRANGEMENT-FEATURES

REVISIONS			
REV.	DESCRIPTION	DATE	APPROVED
5	ECO-2018-03	07/03/2018	MRC
6	ECO-2019-06	06/03/2019	MRC
7	ECO-2019-10	10/18/2019	MRC
8	ECO-2020-03	11/23/2020	DO

UNLESS OTHERWISE NOTED
DIMENSIONS ARE IN INCHES

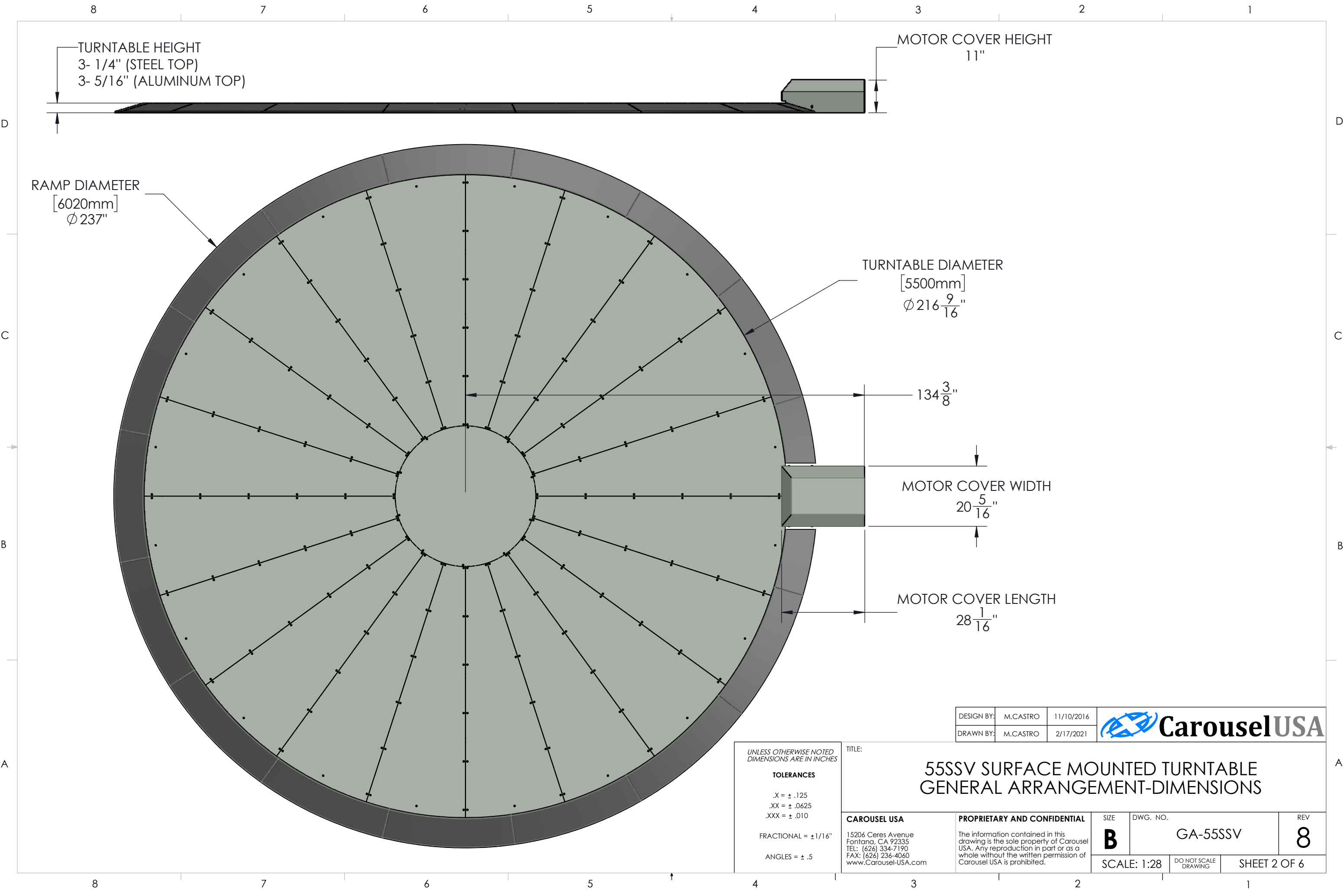
TOLERANCES

.X = ± .125
.XX = ± .0625
.XXX = ± .010

FRACTIONAL = ± 1/16"

ANGLES = ± .5

CAROUSEL USA 15206 Ceres Avenue Fontana, CA 92335 TEL: (626) 334-7190 FAX: (626) 236-4060 www.Carousel-USA.com		PROPRIETARY AND CONFIDENTIAL The information contained in this drawing is the sole property of Carousel USA. Any reproduction in part or as a whole without the written permission of Carousel USA is prohibited.		SIZE B	DWG. NO. GA-55SSV	REV 8
SCALE: 1:28		DO NOT SCALE DRAWING		SHEET 1 OF 6		



UNLESS OTHERWISE NOTED
DIMENSIONS ARE IN INCHES

TOLERANCES

.X = $\pm .125$
.XX = $\pm .0625$
.XXX = $\pm .010$

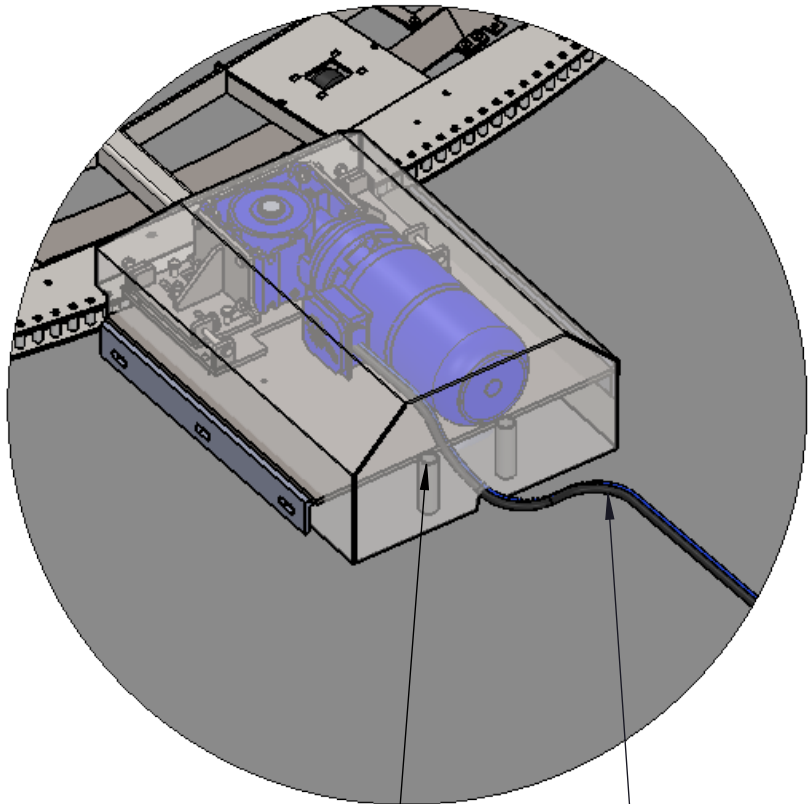
FRACTIONAL = $\pm 1/16''$

ANGLES = $\pm .5$

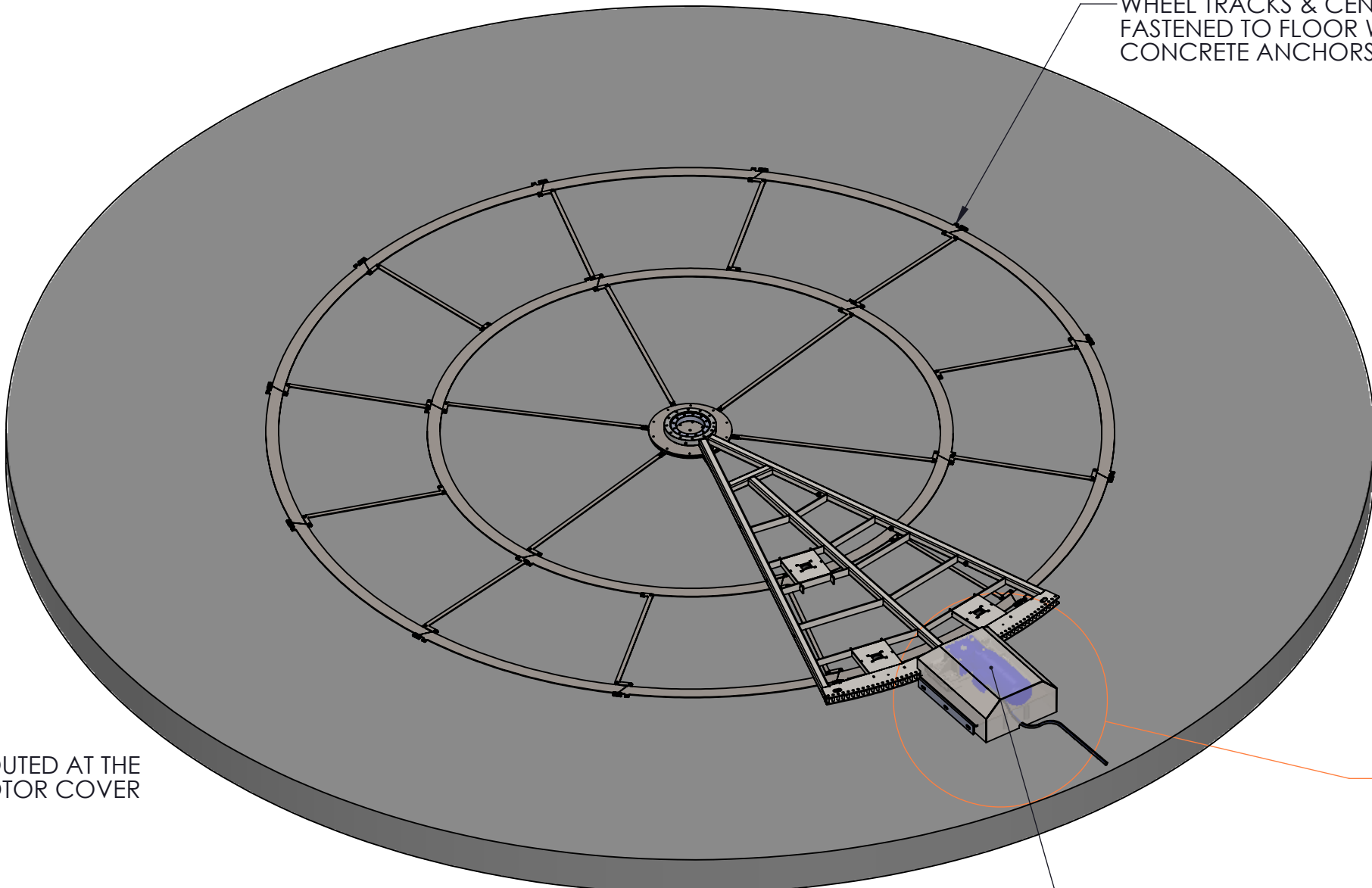
TITLE:		55SSV SURFACE MOUNTED TURNABLE GENERAL ARRANGEMENT-DIMENSIONS		
CAROUSEL USA	PROPRIETARY AND CONFIDENTIAL	SIZE	DWG. NO.	REV
15206 Ceres Avenue Fontana, CA 92335 TEL: (626) 334-7190 FAX: (626) 236-4060 www.Carousel-USA.com	The information contained in this drawing is the sole property of Carousel USA. Any reproduction in part or as a whole without the written permission of Carousel USA is prohibited.	B	GA-55SSV	8
		SCALE: 1:28	DO NOT SCALE DRAWING	SHEET 2 OF 6

DESIGN BY:	M.CASTRO	11/10/2016	
DRAWN BY:	M.CASTRO	2/17/2021	

DETAIL D
SCALE 1:12



WHEEL TRACKS & CENTER BEARING
FASTENED TO FLOOR WITH
CONCRETE ANCHORS

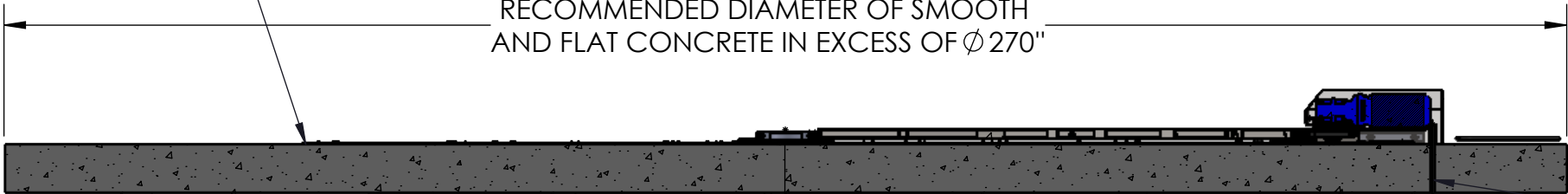


CONDUIT ROUTED UNDER
MOTOR COVER

CONDUIT ROUTED AT THE
BACK OF MOTOR COVER

HEIGHT DEVIATION OF
TURNABLE SURFACE
NO MORE THAN 1/8"

RECOMMENDED DIAMETER OF SMOOTH
AND FLAT CONCRETE IN EXCESS OF $\phi 270"$



MOTOR AND COVER
LOCATED IN REAR OF TURNABLE
(180 DEGREES FROM CAMERA
LOCATION, IF APPLICABLE)

CONDUIT ROUTED UNDER MOTOR COVER

132 ⁹/₁₆"

NOTES:

1. ELECTRICAL CONDUIT MAY ENTER MOTOR COVER FROM UNDER THE FLOOR OR AT THE BACK
2. (1) CONDUIT REQUIRED FOR STANDARD CONTROLS (MOTOR POWER ONLY)
3. (2) CONDUITS REQUIRED FOR MOTION CONTROL (MOTOR POWER & ENCODER FEEDBACK)
4. LEVEL, SMOOTH CONCRETE ENGINEERED FOR PSF POINT LOADS EQUIVALENT OR SURPASSING THAT OF TURNABLE EQUIPMENT
5. SIZE CONDUIT PER LOCAL CODE

UNLESS OTHERWISE NOTED
DIMENSIONS ARE IN INCHES

TOLERANCES

.X = $\pm .125$
.XX = $\pm .0625$
.XXX = $\pm .010$

FRACTIONAL = $\pm 1/16"$

ANGLES = $\pm .5$

TITLE:

55SSV SURFACE MOUNTED TURNABLE
GENERAL ARRANGEMENT-FLOOR REQ.

CAROUSEL USA

15206 Ceres Avenue
Fontana, CA 92335
TEL: (626) 334-7190
FAX: (626) 236-4060
www.Carousel-USA.com

PROPRIETARY AND CONFIDENTIAL

The information contained in this
drawing is the sole property of Carousel
USA. Any reproduction in part or as a
whole without the written permission of
Carousel USA is prohibited.



CarouselUSA

SIZE

B

DWG. NO.

GA-55SSV

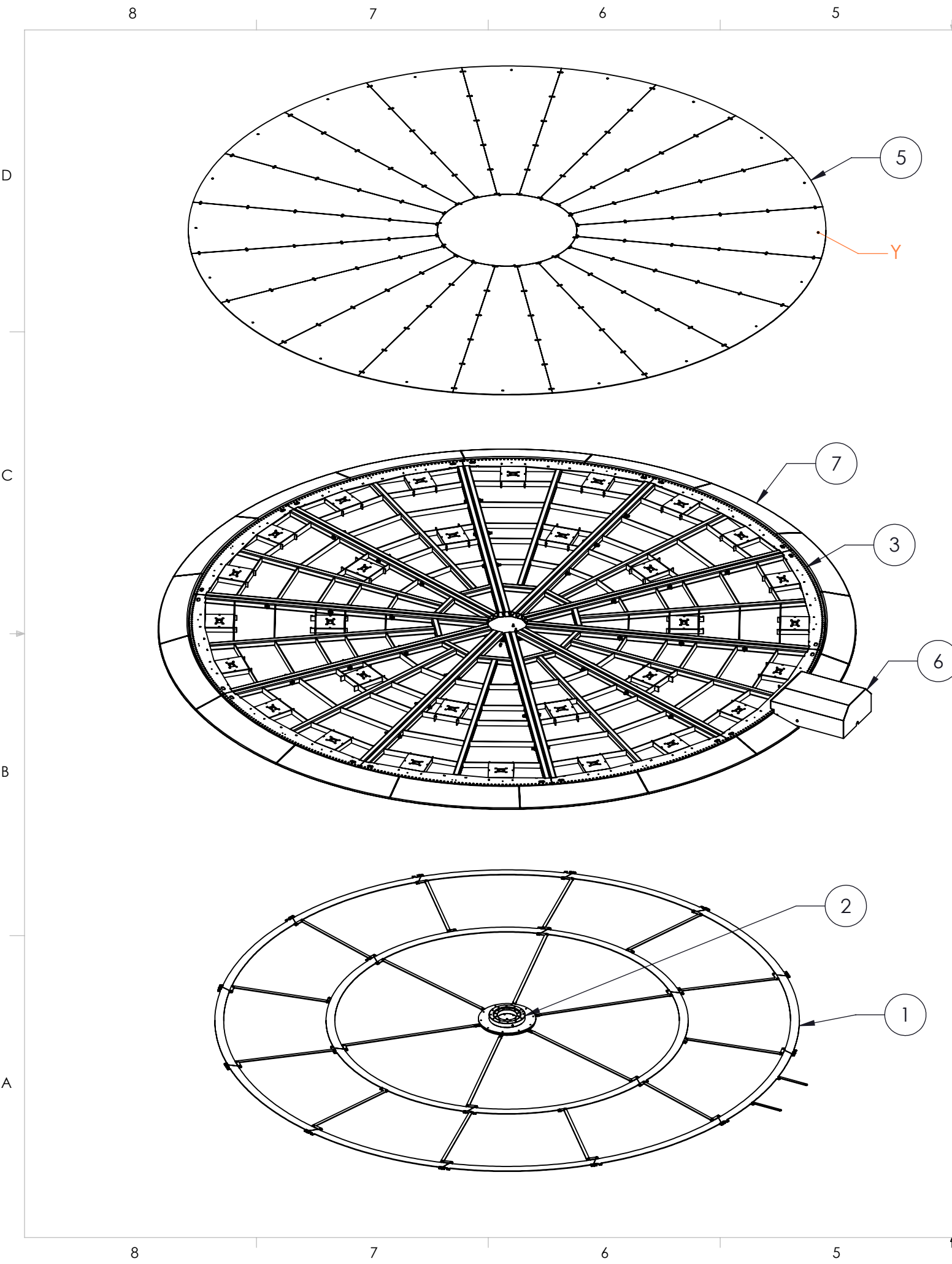
REV

8

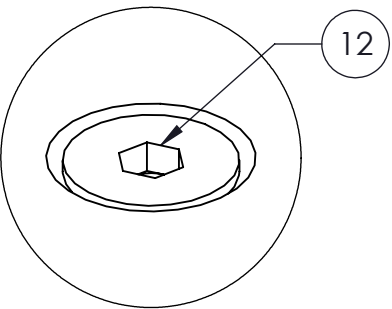
SCALE: 1:34

DO NOT SCALE
DRAWING

SHEET 3 OF 6



ITEM NO.	PART NUMBER	DESCRIPTION	Default/QTY.
1	DTK-55SLP	WHEEL TRACK ASSEMBLY	1
2	DCB-SLP	CENTER BEARING ASSEMBLY	1
3	DPP-55SLP	PIE STRUCTURE ASSEMBLY	10
4	PPP-55SLP-CP	CONNECTOR PLATE	10
5	DTP-SLP55	FULL TOP SURFACE	1
6	DMM-IMM	INVERTED MOTOR MOUNT ASSEMBLY	1
7	RAMP V4	CUSA LOW PROFILE RAMPS	15
8	SBHCS M8 L-12	SOCKET BUTTON HEAD CAP SCREW M8 LENGTH-12mm	96
9	SHCS M10 L-20 TL-20	SOCKET HEAD CAP SCREW M10 LENGTH-20 THREAD LENGTH-20	10
10	SHCS M10 L-16 TL-16	SOCKET HEAD CAP SCREW M10 LENGTH-16 THREAD LENGTH-16	40
11	PPP-SLP-G	CONNECTION BOLT WASHER	90
12	FCHS M6 x 1.0 x 16, TLg 16	SOCKET COUNTERSUNK HEAD CAP SCREW M6 LENGTH-16 THREAD LENGTH-16	270
13	SCHCS M8 L-20 TL-20	SOCKET COUNTERSUNK HEAD CAP SCREW M8 LENGTH-20 THREAD LENGTH-20	6
14	LW-M10	LOCK WASHER, M10, ID-10.5, OD-18.1, TK-2.05	50
15	M14 X 2.0 X 140MM SHCS	CLASS 12.9 ZINC PLATED	30
16	M14 X 2.0 NYLOCK NUT	CLASS 8, ZINC PLATED	30
17	M6 x 1.0 x 16 BHCS	BUTTON HEAD CAP SCREW	8
18	LW-M8	LOCK WASHER, M8, ID-8.5, OD-14.8, TK-1.9	96



DETAIL Y
SCALE 2 : 1

UNLESS OTHERWISE NOTED
DIMENSIONS ARE IN INCHES

TOLERANCES

.X = ± .125
.XX = ± .0625
.XXX = ± .010

FRACTIONAL = ± 1/16"

ANGLES = ± .5

TITLE:

**55SSV SURFACE MOUNTED TURNTABLE
BOM**

DESIGN BY:	M.CASTRO	11/10/2016
DRAWN BY:	M.CASTRO	2/17/2021

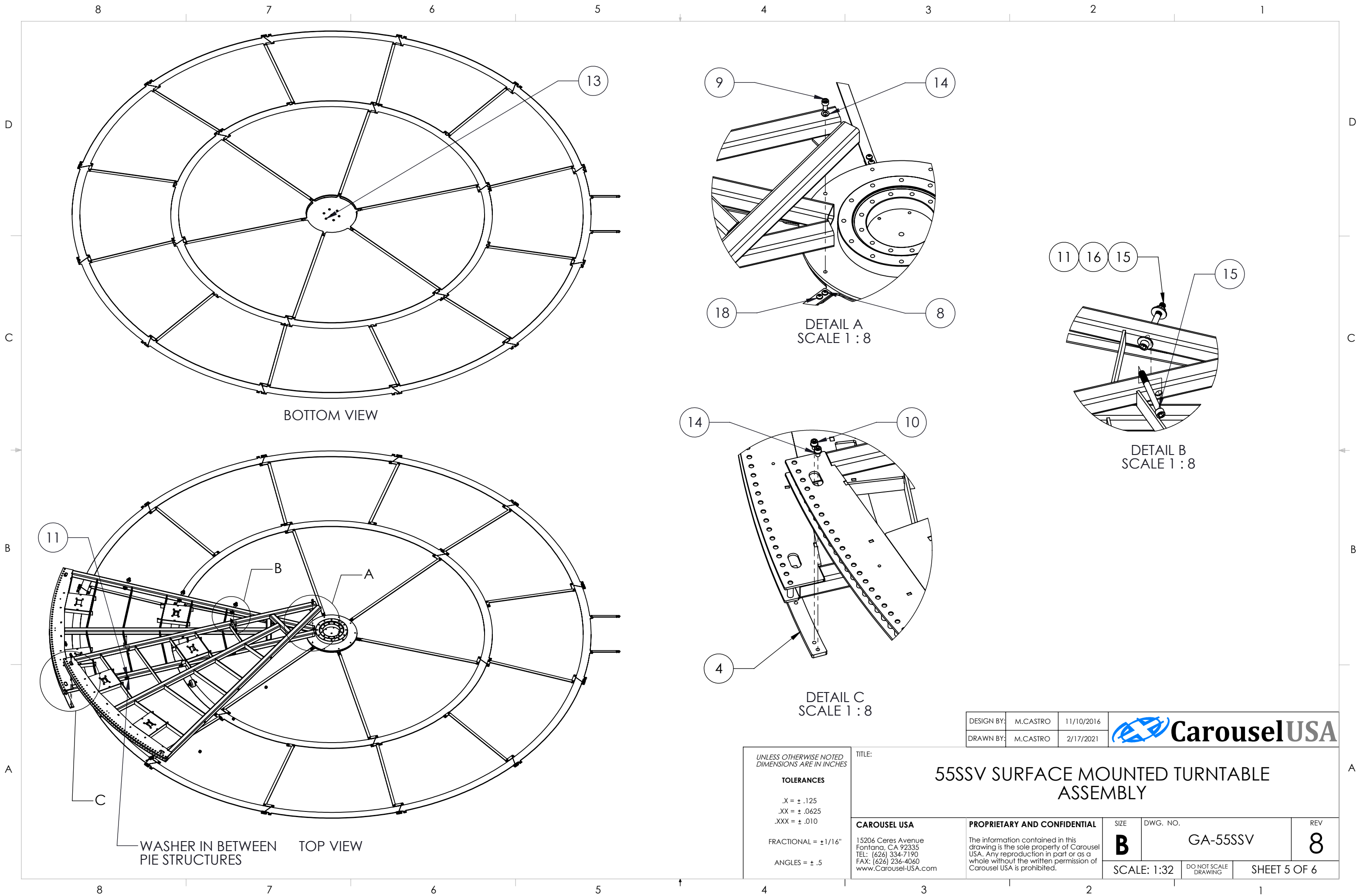
CAROUSEL USA

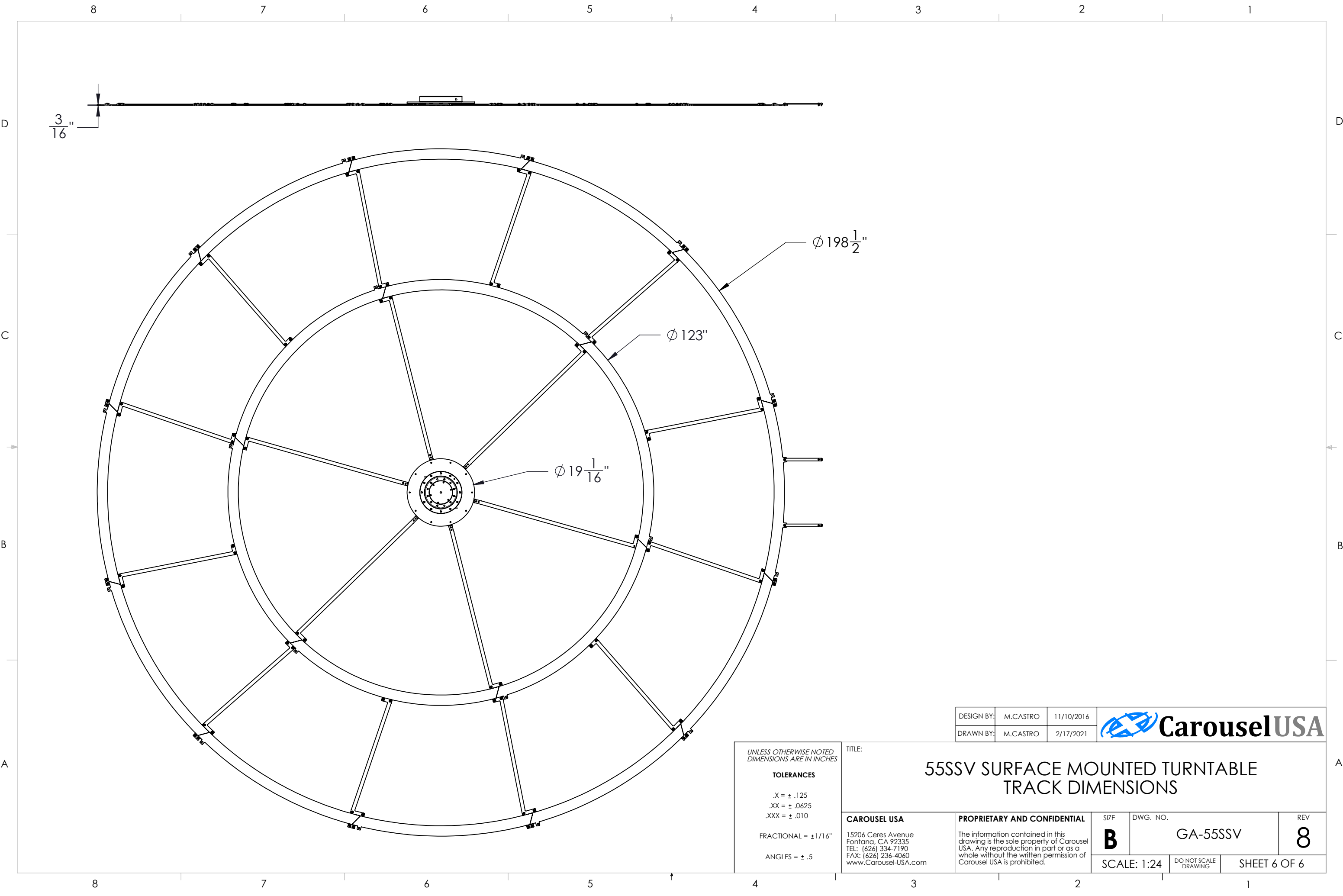
15206 Ceres Avenue
Fontana, CA 92335
TEL: (626) 334-7190
FAX: (626) 236-4060
www.Carousel-USA.com

PROPRIETARY AND CONFIDENTIAL

The information contained in this drawing is the sole property of Carousel USA. Any reproduction in part or as a whole without the written permission of Carousel USA is prohibited.

SIZE	DWG. NO.	REV
B	GA-55SSV	8
SCALE: 1:40		DO NOT SCALE DRAWING
SHEET 4 OF 6		





UNLESS OTHERWISE NOTED
DIMENSIONS ARE IN INCHES

TOLERANCES

.X = $\pm .125$
.XX = $\pm .0625$
.XXX = $\pm .010$

FRACTIONAL = $\pm 1/16$ "

ANGLES = $\pm .5$

TITLE:			<div>55SSV SURFACE MOUNTED TURNTABLE TRACK DIMENSIONS</div>		
DESIGN BY:	M.CASTRO	11/10/2016			
DRAWN BY:	M.CASTRO	2/17/2021	<div><div><div>CarouselUSA</div></div></div>		
CAROUSEL USA		PROPRIETARY AND CONFIDENTIAL		SIZE	DWG. NO.
15206 Ceres Avenue Fontana, CA 92335 TEL: (626) 334-7190 FAX: (626) 236-4060 www.Carousel-USA.com		The information contained in this drawing is the sole property of Carousel USA. Any reproduction in part or as a whole without the written permission of Carousel USA is prohibited.		B	GA-55SSV
				SCALE: 1:24	REV
				DO NOT SCALE DRAWING	8
				SHEET 6 OF 6	