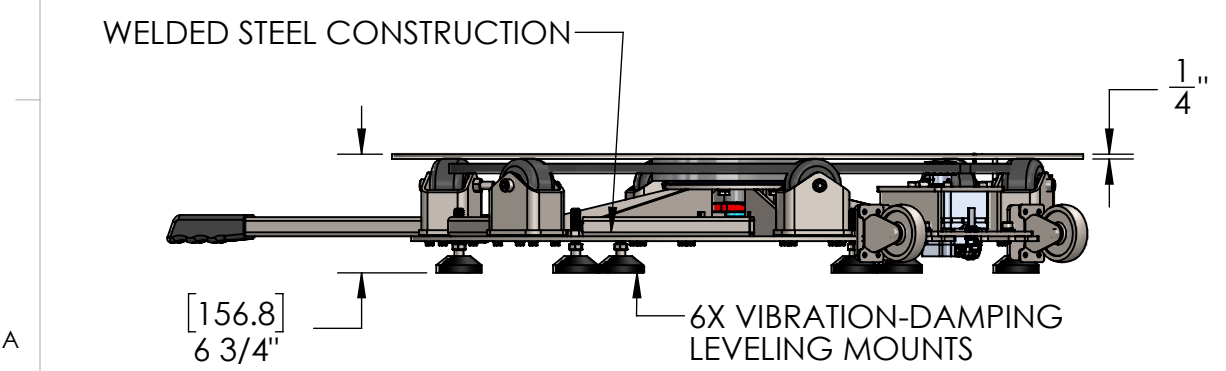
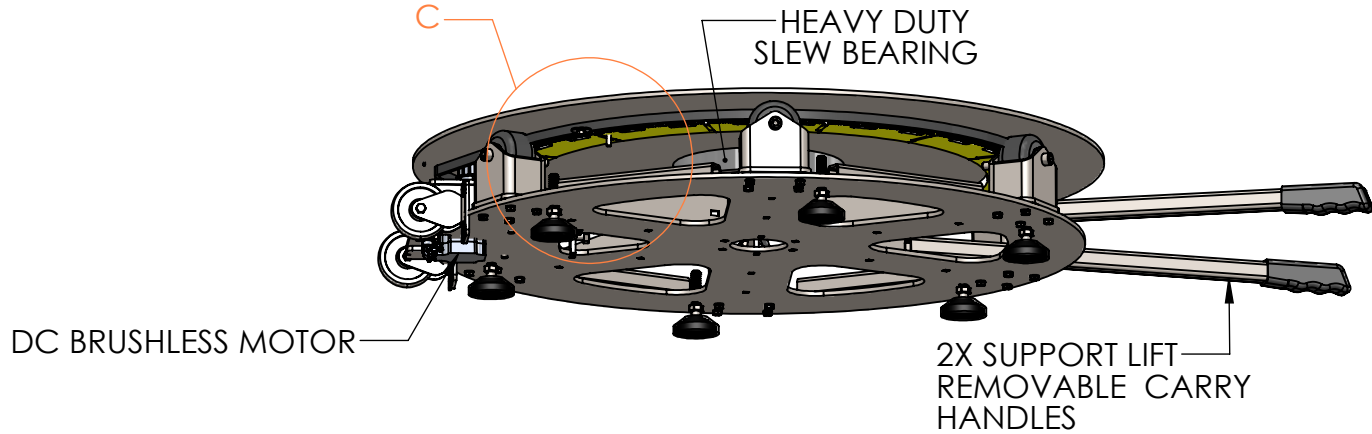

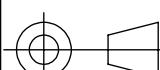
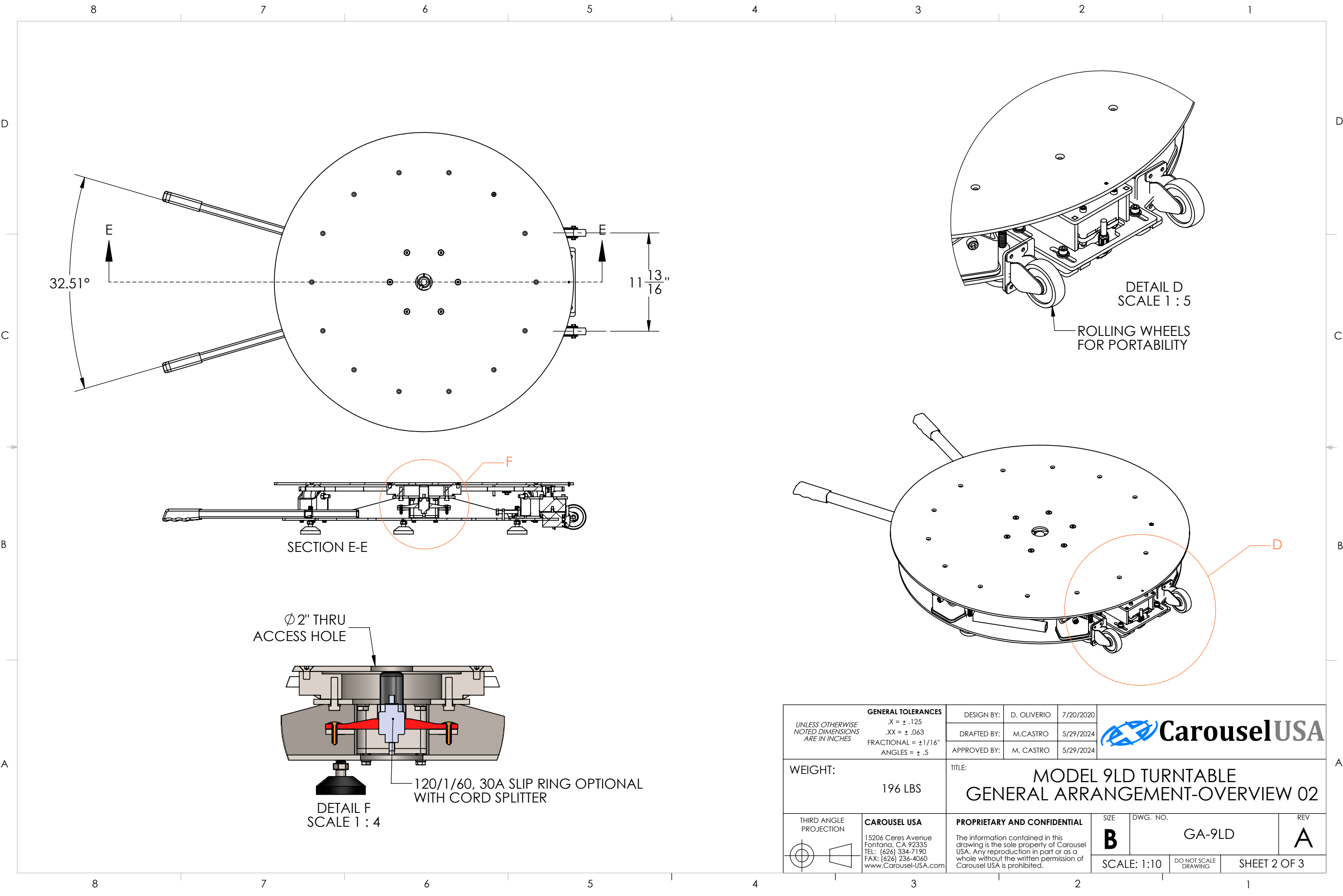

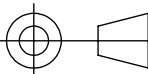


SPECIFICATIONS	
TURNTABLE DIAMETER:	36"
TURNTABLE HEIGHT:	6-3/4"
TURNTABLE SPEED:	CW/CCW 0.15-4.19 RPM
ACCELERATION	0-2 RPM IN 1 SECOND
LOAD CAPACITY:	1,000 LBS
MOTOR AND DRIVE:	DC BRUSHLESS MOTOR
WEIGHT	1. ALL STEEL ~ 200 LB 2. ALL ALUMINUM ~100 LB



<div>UNLESS OTHERWISE NOTED DIMENSIONS ARE IN INCHES</div>		GENERAL TOLERANCES		DESIGN BY: D. OLIVERIO		7/20/2020		<div> CarouselUSA</div>			
		.X = ± .125 .XX = ± .063 FRACTIONAL = ± 1/16" ANGLES = ± .5		DRAFTED BY: M.CASTRO		5/29/2024					
				APPROVED BY: M. CASTRO		5/29/2024					
WEIGHT: 196 LBS				TITLE: MODEL 9LD TURNTABLE GENERAL ARRANGEMENT-OVERVIEW 01							
<div>THIRD ANGLE PROJECTION</div> <div></div>		<div>CAROUSEL USA</div> <div>15206 Ceres Avenue Fontana, CA 92335 TEL: (626) 334-7190 FAX: (626) 236-4060 www.Carousel-USA.com</div>		<div>PROPRIETARY AND CONFIDENTIAL</div> <div>The information contained in this drawing is the sole property of Carousel USA. Any reproduction in part or as a whole without the written permission of Carousel USA is prohibited.</div>		SIZE		DWG. NO.		REV	
						B		GA-9LD		A	
						SCALE: 1:10		DO NOT SCALE DRAWING		SHEET 1 OF 3	



UNLESS OTHERWISE NOTED DIMENSIONS ARE IN INCHES	GENERAL TOLERANCES		DESIGN BY:	D. OLIVERIO	7/20/2020				
	.X = ± .125		DRAFTED BY:	M.CASTRO	5/29/2024				
	.XX = ± .063		APPROVED BY:	M. CASTRO	5/29/2024				
FRACTIONAL = ±1/16"									
ANGLES = ± .5									
WEIGHT:		TITLE:					MODEL 9LD TURNTABLE GENERAL ARRANGEMENT-OVERVIEW 02		
196 LBS									
THIRD ANGLE PROJECTION		CAROUSEL USA		PROPRIETARY AND CONFIDENTIAL		SIZE	DWG. NO.		REV
		15206 Ceres Avenue Fontana, CA 92335 TEL: (626) 334-7190 FAX: (626) 236-4060 www.Carousel-USA.com		The information contained in this drawing is the sole property of Carousel USA. Any reproduction in part or as a whole without the written permission of Carousel USA is prohibited.		B	GA-9LD		A
						SCALE: 1:10		DO NOT SCALE DRAWING	SHEET 2 OF 3

