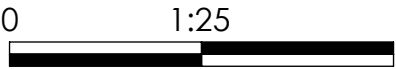
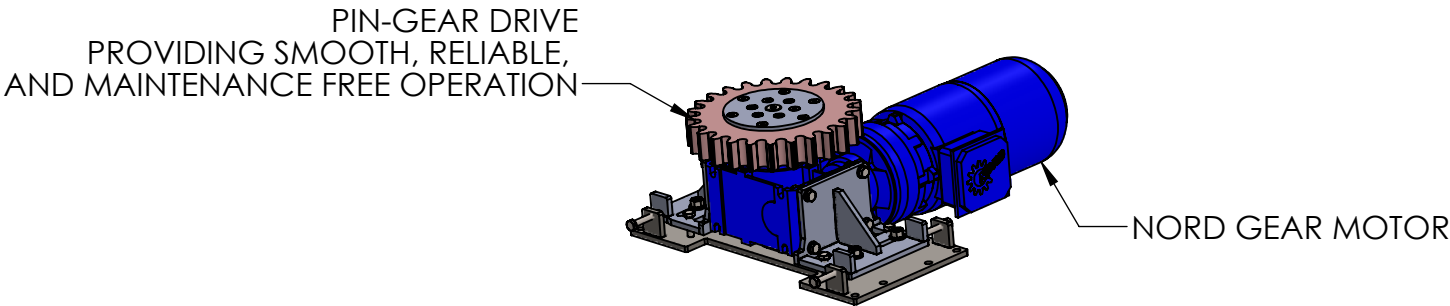
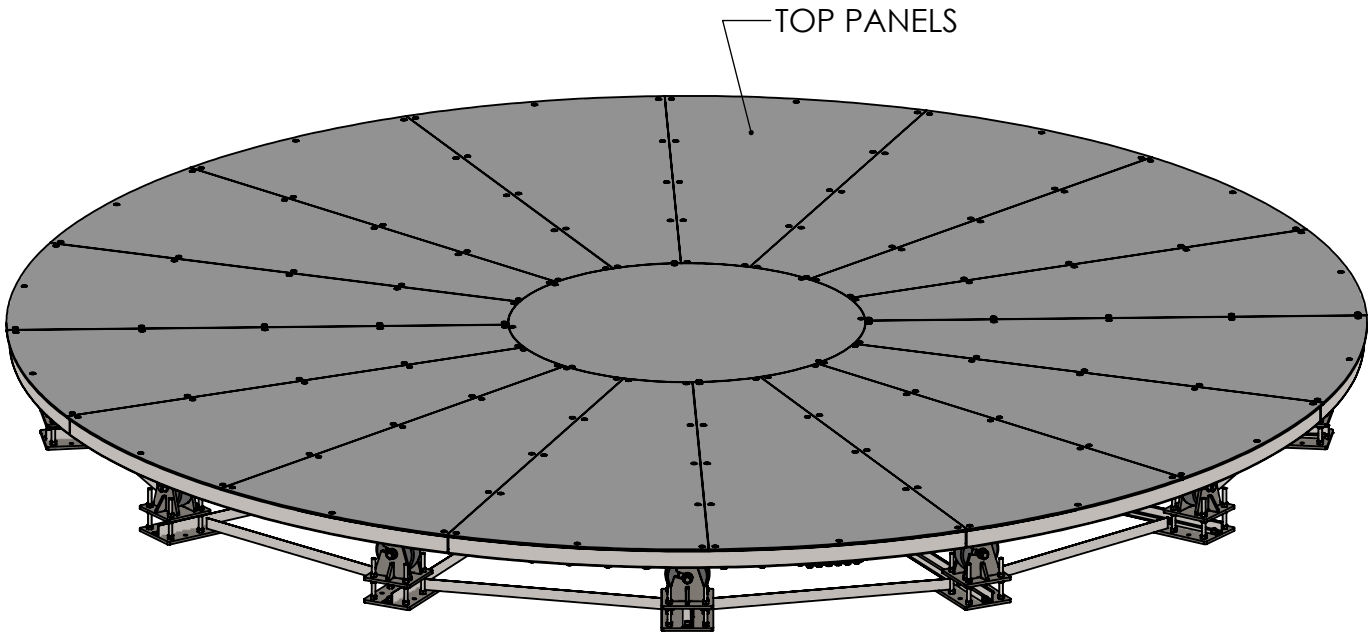
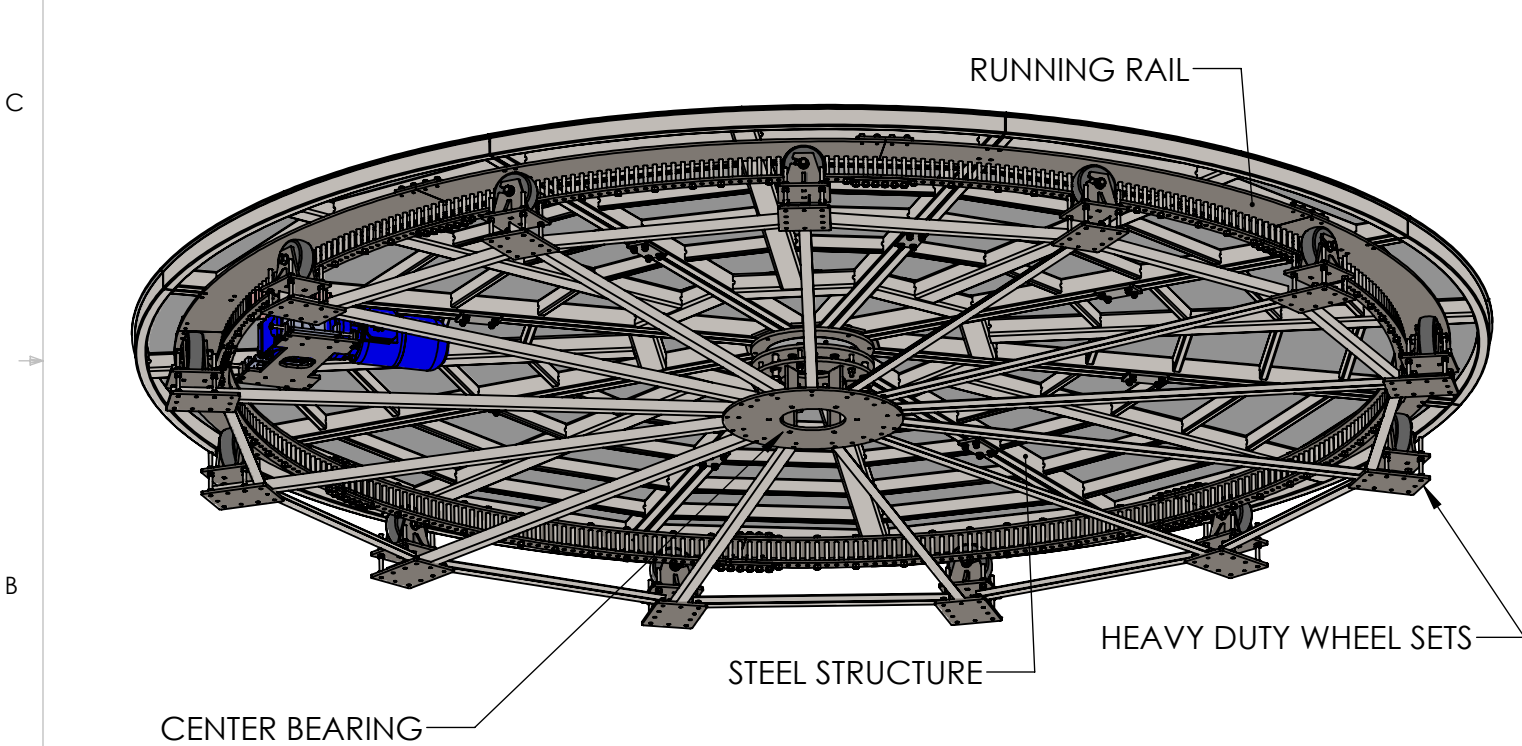


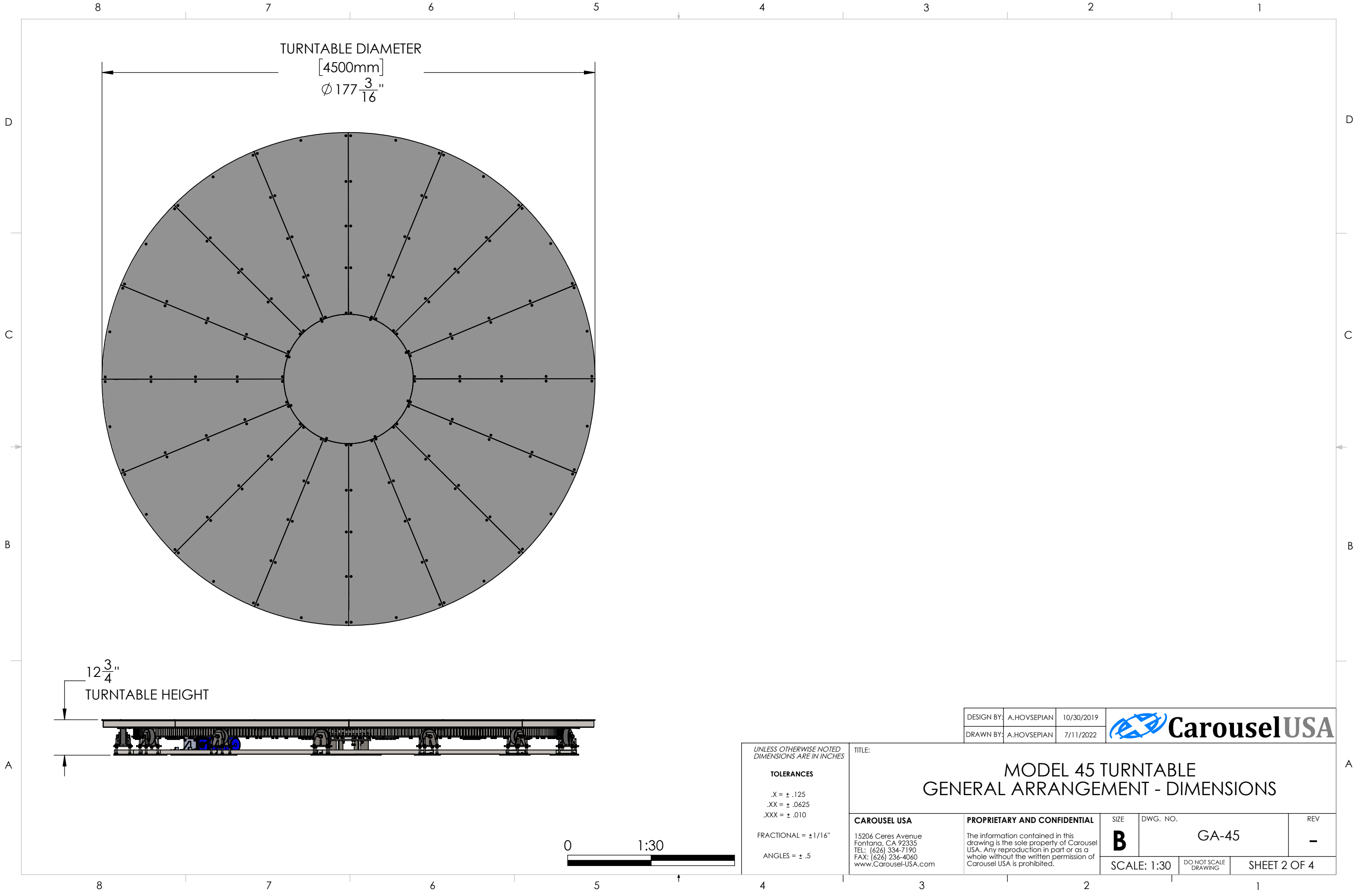
SPECIFICATIONS
TURNTABLE DIAMETER: 177 ³ / ₁₆ " , [4500mm]
TURNTABLE HEIGHT: 12 ³ / ₄ "
TURNTABLE SPEED: 0.2-1.0 RPM
CAPACITY: 10,000 LBS
MOTOR AND DRIVE: NORD 1.0 HP 230V/3Φ/60Hz @ 2.9 FLA

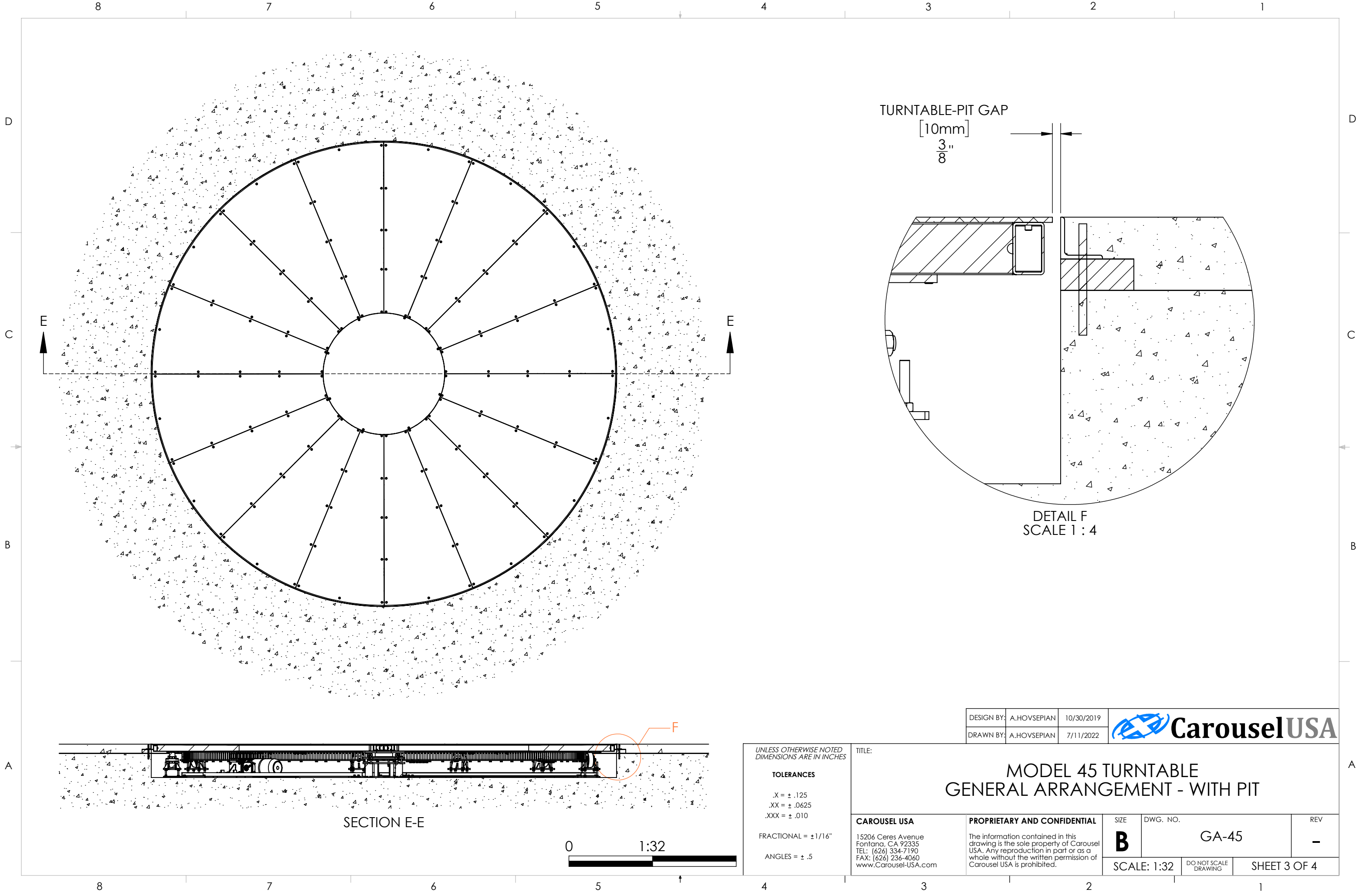
TOP PANEL MATERIAL OPTIONS	THICKNESS	TEXTURE
ALUMINUM	¹ / ₄ "	SMOOTH OR DIAMOND TREAD
STEEL	³ / ₁₆ "	SMOOTH OR DIAMOND TREAD
STAINLESS STEEL	³ / ₁₆ "	SMOOTH OR DIAMOND TREAD
ACX PLYWOOD	³ / ₄ "	SANDED

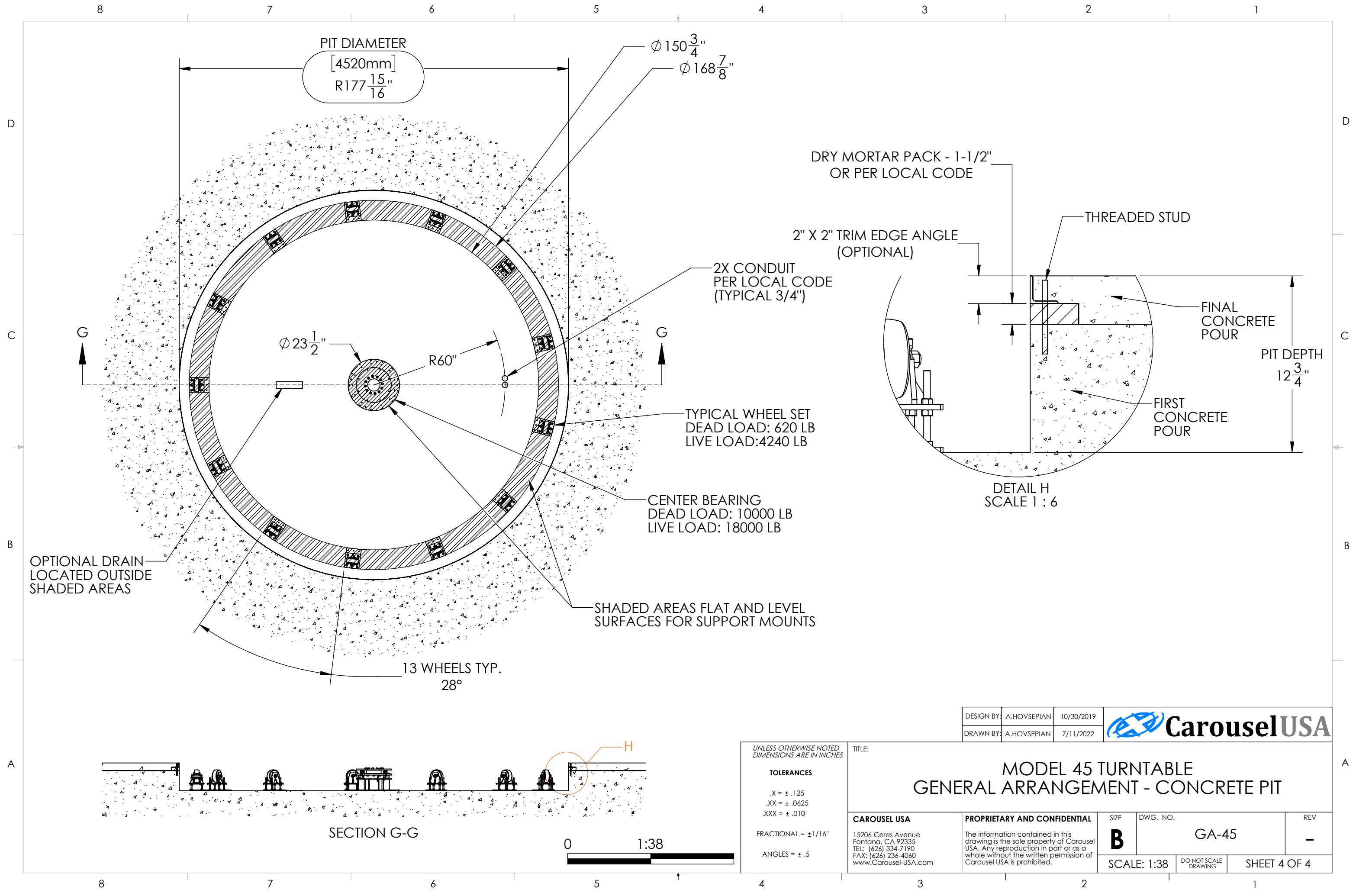


DESIGN BY:	A.HOVSEPIAN	10/30/2019	
DRAWN BY:	A.HOVSEPIAN	7/11/2022	

UNLESS OTHERWISE NOTED DIMENSIONS ARE IN INCHES		TITLE: MODEL 45 TURNTABLE GENERAL ARRANGEMENT - OVERVIEW				
TOLERANCES .X = ± .125 .XX = ± .0625 .XXX = ± .010 FRACTIONAL = ± 1/16" ANGLES = ± .5		CAROUSEL USA 15206 Ceres Avenue Fontana, CA 92335 TEL: (626) 334-7190 FAX: (626) 236-4060 www.Carousel-USA.com	PROPRIETARY AND CONFIDENTIAL The information contained in this drawing is the sole property of Carousel USA. Any reproduction in part or as a whole without the written permission of Carousel USA is prohibited.	SIZE B	DWG. NO. GA-45	REV -
				SCALE: 1:25	DO NOT SCALE DRAWING	SHEET 1 OF 4







DESIGN BY:	A.HOVSEPIAN	10/30/2019
DRAWN BY:	A.HOVSEPIAN	7/11/2022

 **CarouselUSA**

MODEL 45 TURNTABLE
GENERAL ARRANGEMENT - CONCRETE PIT

CAROUSEL USA	PROPRIETARY AND CONFIDENTIAL	SIZE	DWG. NO.		REV
15206 Ceres Avenue Fontana, CA 92335 TEL: (626) 334-7190 FAX: (626) 236-4060 www.Carousel-USA.com	The information contained in this drawing is the sole property of Carousel USA. Any reproduction in part or as a whole without the written permission of Carousel USA is prohibited.	B	GA-45		-
		SCALE: 1:38	DO NOT SCALE DRAWING	SHEET 4 OF 4	

UNLESS OTHERWISE NOTED
DIMENSIONS ARE IN INCHES

TOLERANCES

.X = ± .125
.XX = ± .0625
.XXX = ± .010

FRACTIONAL = ± 1/16"

ANGLES = ± .5