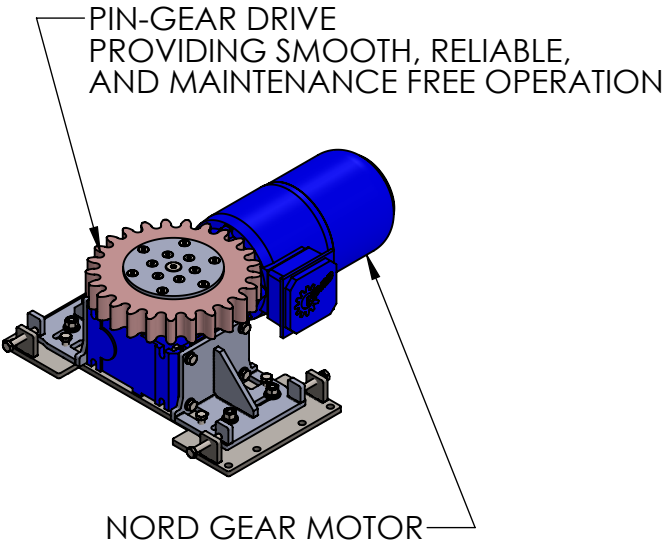
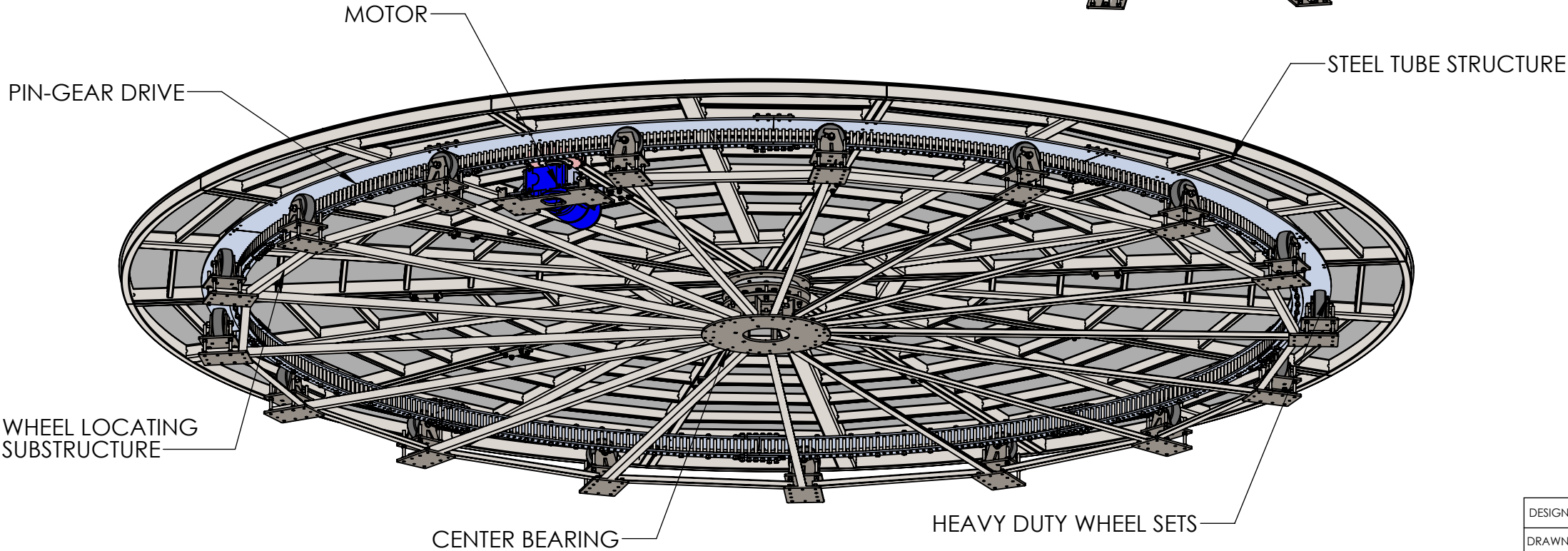
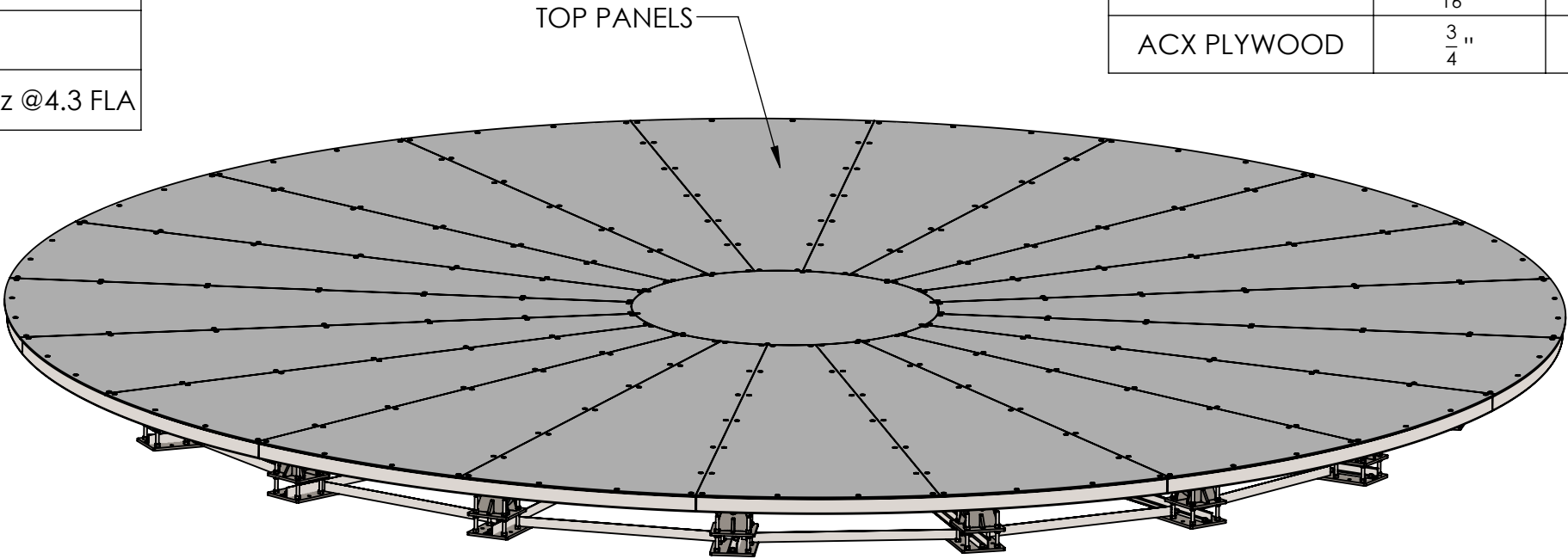


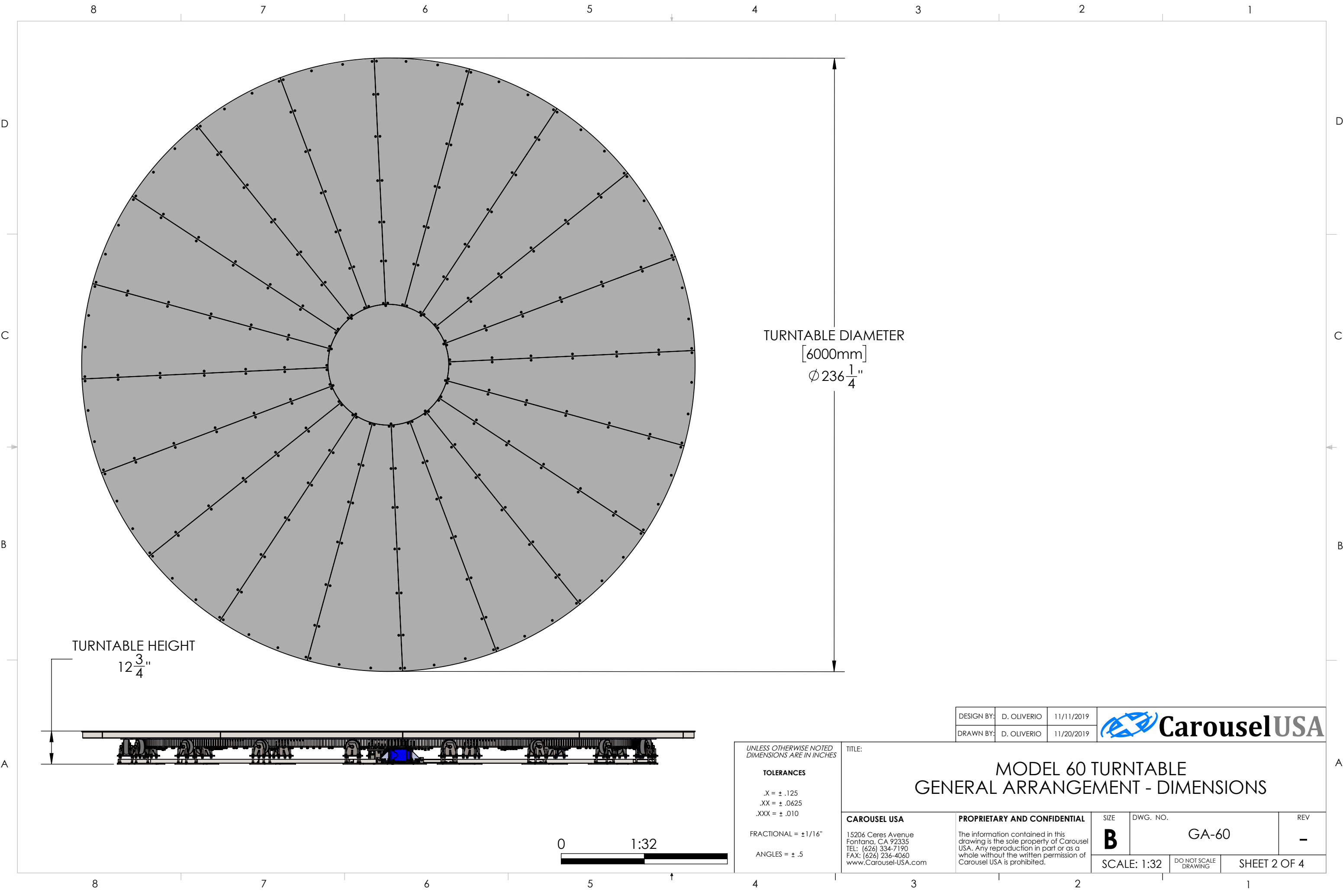
SPECIFICATIONS
TURNTABLE DIAMETER: 236 $\frac{1}{4}$ " , [6000mm]
TURNTABLE HEIGHT: 12 $\frac{3}{4}$ "
TURNTABLE SPEED: 0.2-1.0 RPM
CAPACITY: 10,000 LBS
MOTOR AND DRIVE: NORD 1.5 HP 230V/3Φ/60Hz @4.3 FLA

TOP PANEL MATERIAL OPTIONS	THICKNESS	TEXTURE
ALUMINUM	$\frac{1}{4}$ "	SMOOTH OR DIAMOND TREAD
STEEL	$\frac{3}{16}$ "	SMOOTH OR DIAMOND TREAD
STAINLESS STEEL	$\frac{3}{16}$ "	SMOOTH OR DIAMOND TREAD
ACX PLYWOOD	$\frac{3}{4}$ "	SANDED



DESIGN BY:	D. OLIVERIO	11/11/2019	
DRAWN BY:	D. OLIVERIO	11/20/2019	

UNLESS OTHERWISE NOTED DIMENSIONS ARE IN INCHES		TITLE: MODEL 60 TURNTABLE GENERAL ARRANGEMENT - OVERVIEW			
TOLERANCES .X = ± .125 .XX = ± .0625 .XXX = ± .010 FRACTIONAL = ± 1/16" ANGLES = ± .5		CAROUSEL USA 15206 Ceres Avenue Fontana, CA 92335 TEL: (626) 334-7190 FAX: (626) 236-4060 www.Carousel-USA.com	PROPRIETARY AND CONFIDENTIAL The information contained in this drawing is the sole property of Carousel USA. Any reproduction in part or as a whole without the written permission of Carousel USA is prohibited.	SIZE B	DWG. NO. GA-60
0 1:25		SCALE: 1:25		DO NOT SCALE DRAWING	SHEET 1 OF 4



TURNTABLE HEIGHT
 $12\frac{3}{4}"$

TURNTABLE DIAMETER
[6000mm]
 $\phi 236\frac{1}{4}"$

UNLESS OTHERWISE NOTED
DIMENSIONS ARE IN INCHES

TOLERANCES

.X = $\pm .125$
.XX = $\pm .0625$
.XXX = $\pm .010$

FRACTIONAL = $\pm 1/16"$

ANGLES = $\pm .5$

TITLE:

MODEL 60 TURNTABLE
GENERAL ARRANGEMENT - DIMENSIONS

CAROUSEL USA

15206 Ceres Avenue
Fontana, CA 92335
TEL: (626) 334-7190
FAX: (626) 236-4060
www.Carousel-USA.com

PROPRIETARY AND CONFIDENTIAL

The information contained in this drawing is the sole property of Carousel USA. Any reproduction in part or as a whole without the written permission of Carousel USA is prohibited.

SIZE

B

DWG. NO.

GA-60

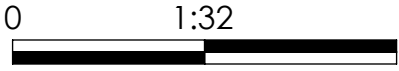
REV

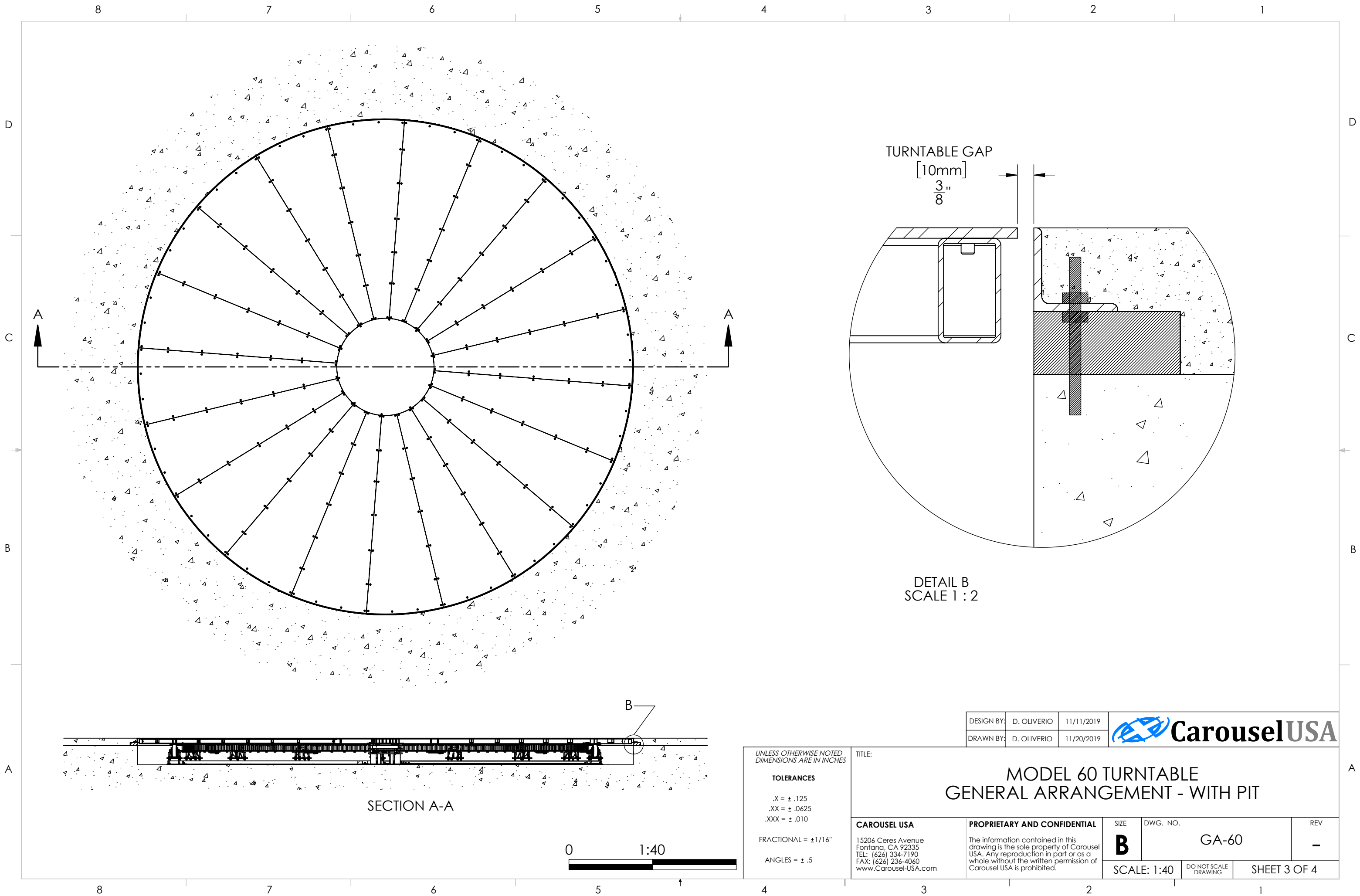
-

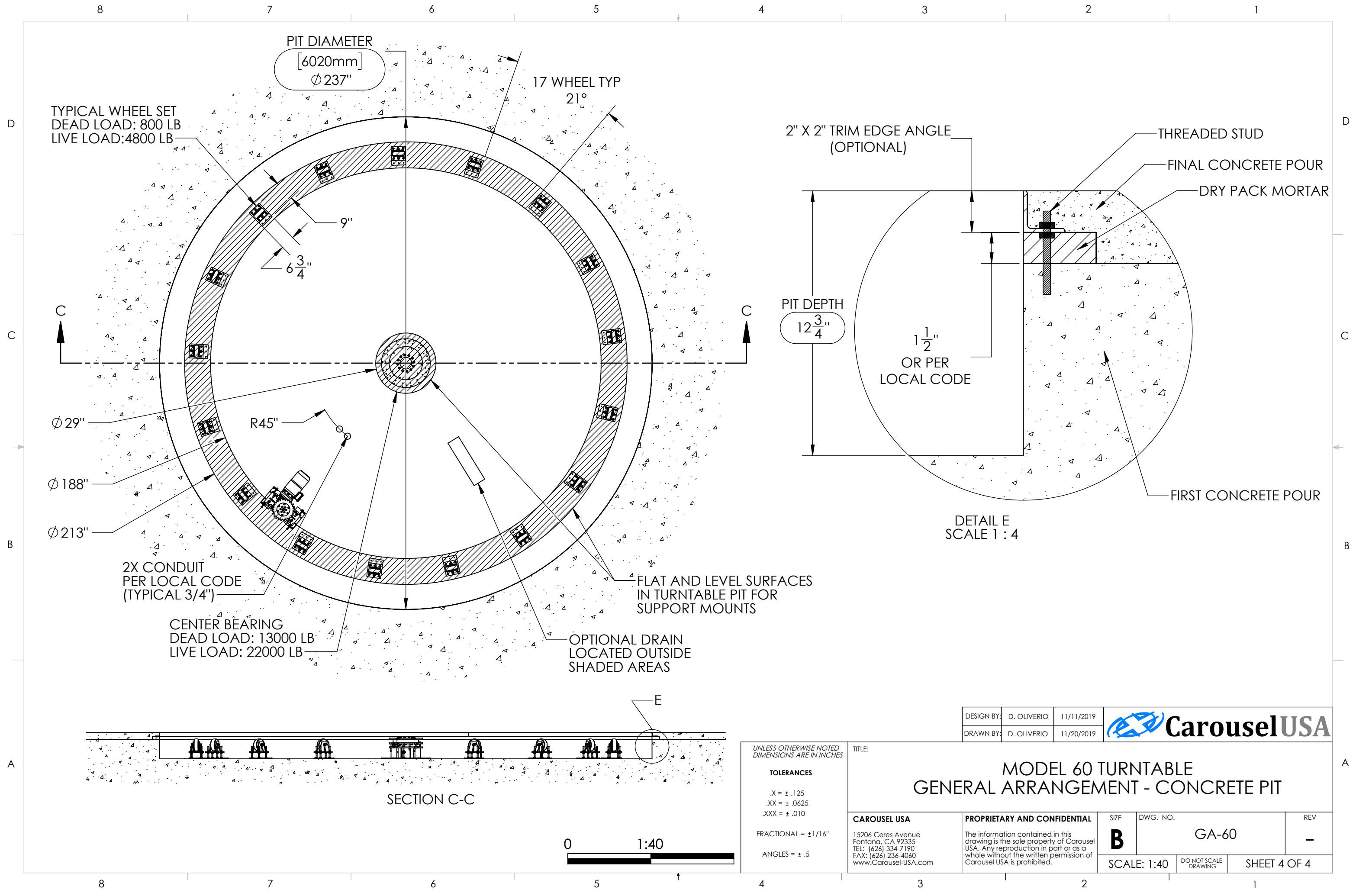
SCALE: 1:32

DO NOT SCALE
DRAWING

SHEET 2 OF 4







TYPICAL WHEEL SET
DEAD LOAD: 800 LB
LIVE LOAD: 4800 LB

PIT DIAMETER
[6020mm]
Ø 237"

17 WHEEL TYP
21°

9"

6 3/4"

Ø 29"

Ø 188"

Ø 213"

R45"

2X CONDUIT
PER LOCAL CODE
(TYPICAL 3/4")

CENTER BEARING
DEAD LOAD: 13000 LB
LIVE LOAD: 22000 LB

FLAT AND LEVEL SURFACES
IN TURNABLE PIT FOR
SUPPORT MOUNTS

OPTIONAL DRAIN
LOCATED OUTSIDE
SHADED AREAS

2" X 2" TRIM EDGE ANGLE
(OPTIONAL)

PIT DEPTH
12 3/4"

1 1/2"
OR PER
LOCAL CODE

THREADED STUD

FINAL CONCRETE POUR

DRY PACK MORTAR

FIRST CONCRETE POUR

DETAIL E
SCALE 1 : 4

SECTION C-C

0 1:40

DESIGN BY:	D. OLIVERIO	11/11/2019
DRAWN BY:	D. OLIVERIO	11/20/2019



UNLESS OTHERWISE NOTED DIMENSIONS ARE IN INCHES		TITLE: MODEL 60 TURNTABLE GENERAL ARRANGEMENT - CONCRETE PIT			
TOLERANCES .X = ± .125 .XX = ± .0625 .XXX = ± .010 FRACTIONAL = ± 1/16" ANGLES = ± .5		CAROUSEL USA 15206 Ceres Avenue Fontana, CA 92335 TEL: (626) 334-7190 FAX: (626) 236-4060 www.Carousel-USA.com		PROPRIETARY AND CONFIDENTIAL The information contained in this drawing is the sole property of Carousel USA. Any reproduction in part or as a whole without the written permission of Carousel USA is prohibited.	
SIZE B		DWG. NO. GA-60		REV -	
SCALE: 1:40		DO NOT SCALE DRAWING		SHEET 4 OF 4	