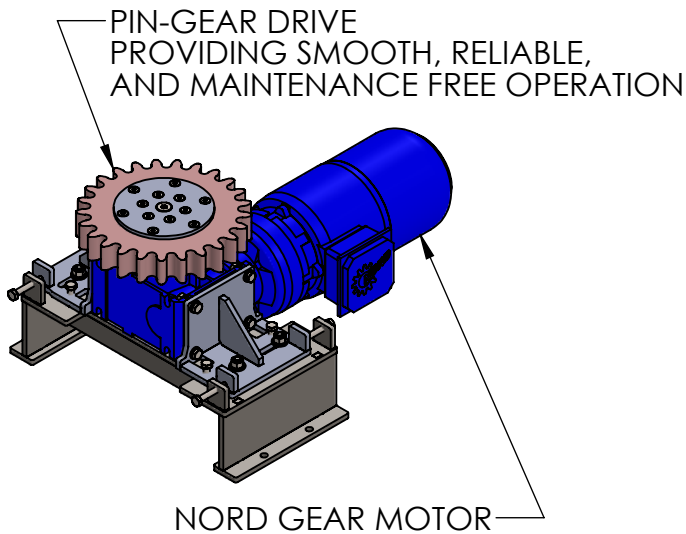
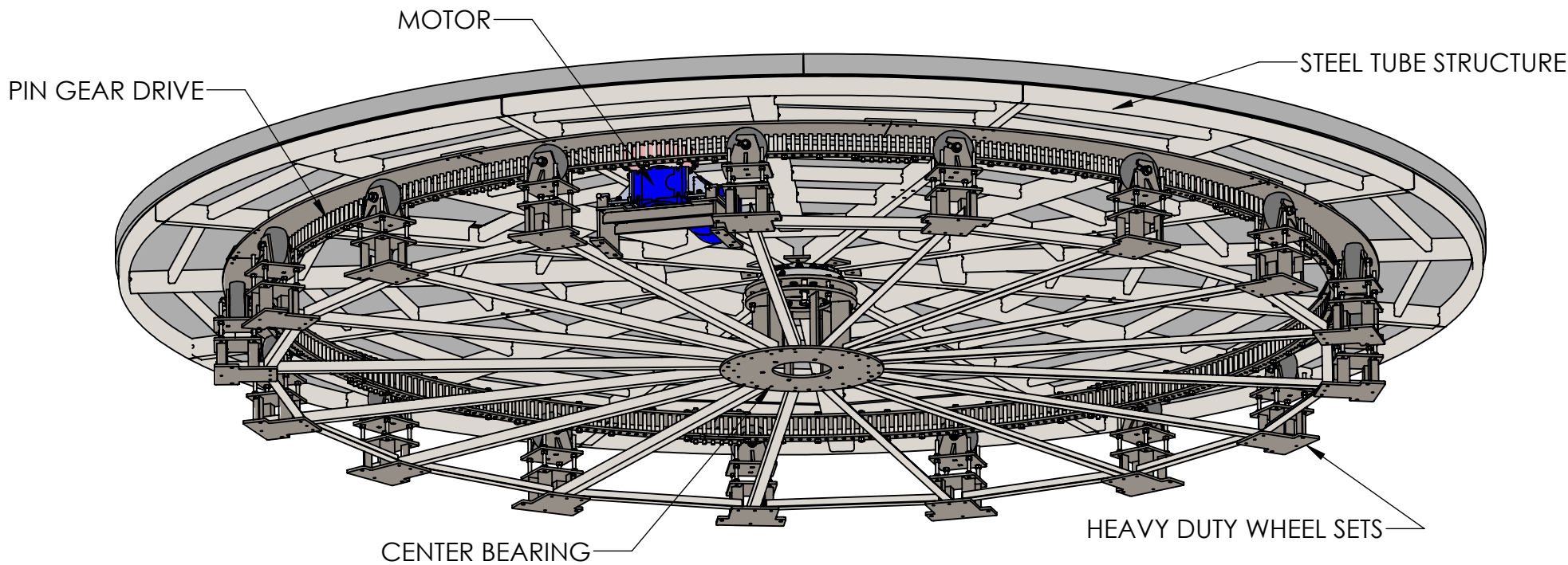
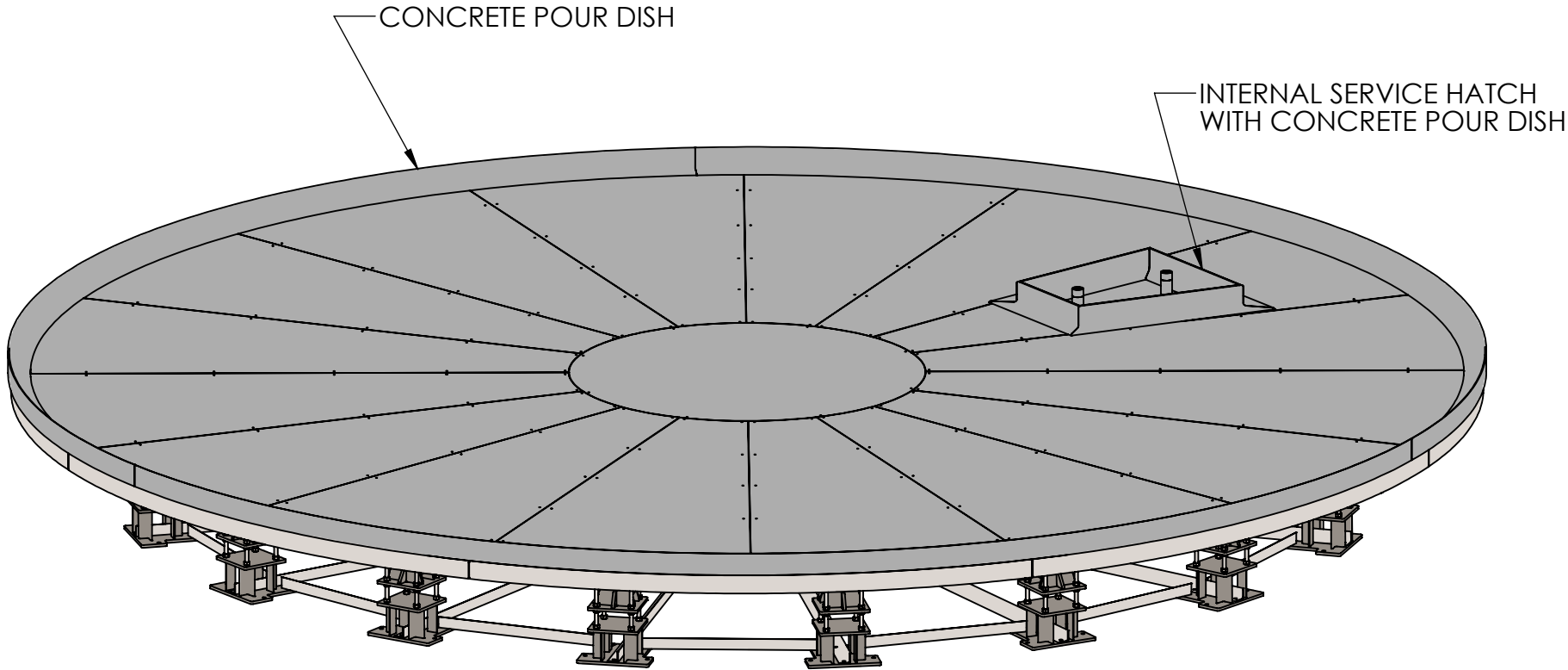


SPECIFICATIONS	
TURNTABLE DIAMETER: 196 <sup>7</sup> / <sub>8</sub> " , [5000mm]	
TURNTABLE HEIGHT: 20 "	
TURNTABLE SPEED: 0.2-1.0 RPM	
CAPACITY: 10,000 LBS	
MOTOR AND DRIVE: NORD 1.0 HP 230V/3Φ/60Hz @ 2.9 FLA	
ASSEMBLED TURNTABLE WEIGHT: 5,086 LBS	



DESIGN BY:	D. OLIVERIO	10/28/2019	
DRAWN BY:	D. OLIVERIO	8/4/2022	

# MODEL 50CCI TURNTABLE GENERAL ARRANGEMENT - OVERVIEW

<b>CAROUSEL USA</b>	<b>PROPRIETARY AND CONFIDENTIAL</b>	SIZE	DWG. NO.		REV
15206 Ceres Avenue Fontana, CA 92335 TEL: (626) 334-7190 FAX: (626) 236-4060 www.Carousel-USA.com	The information contained in this drawing is the sole property of Carousel USA. Any reproduction in part or as a whole without the written permission of Carousel USA is prohibited.	<b>B</b>	GA-50CCI		-
		SCALE: 1:22	DO NOT SCALE DRAWING	SHEET 1 OF 4	

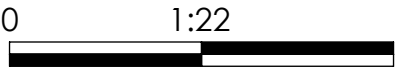
UNLESS OTHERWISE NOTED  
DIMENSIONS ARE IN INCHES

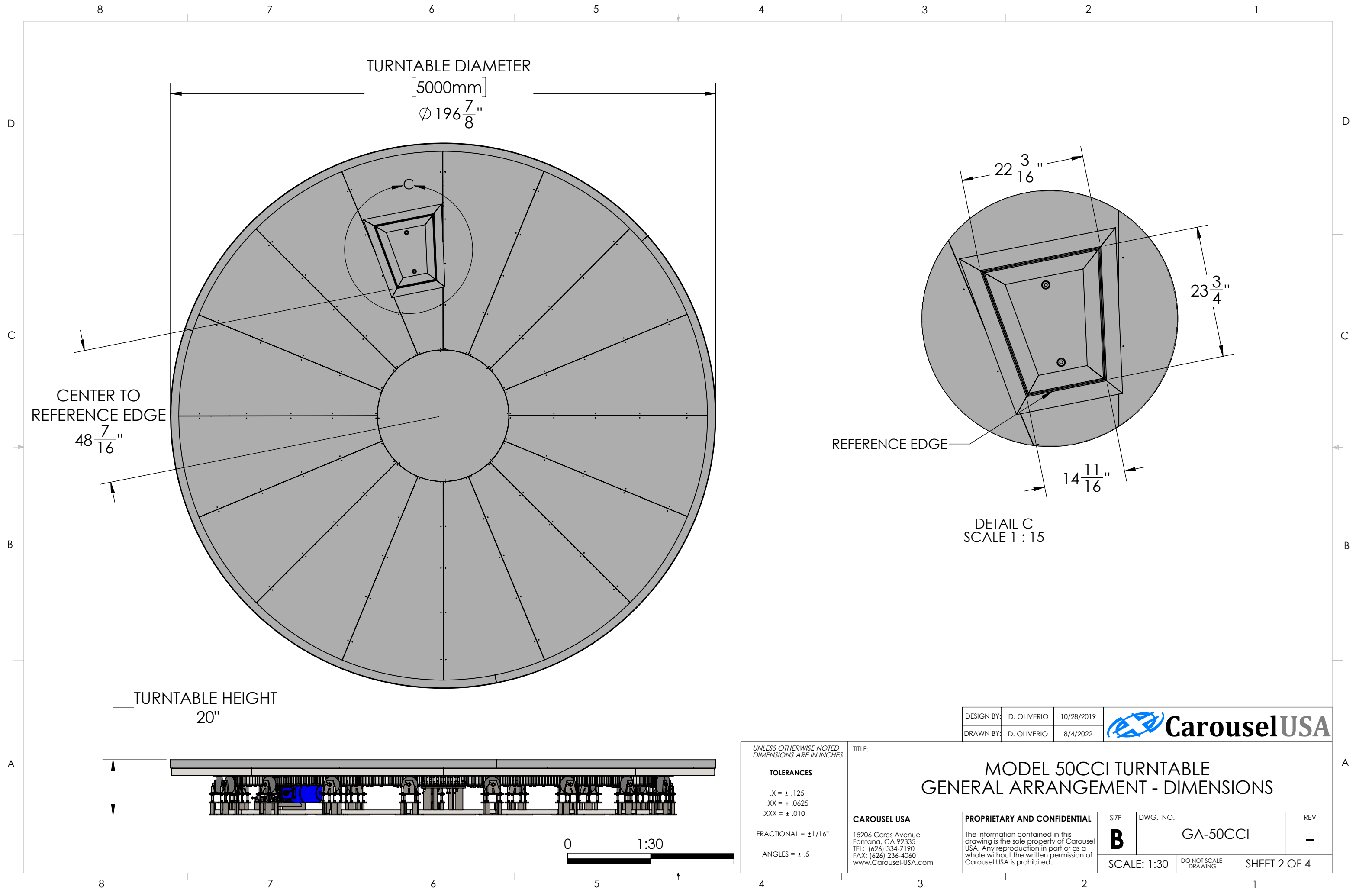
## TOLERANCES

.X = ± .125  
.XX = ± .0625  
.XXX = ± .010

FRACTIONAL = ± 1/16"

ANGLES = ± .5





UNLESS OTHERWISE NOTED  
DIMENSIONS ARE IN INCHES

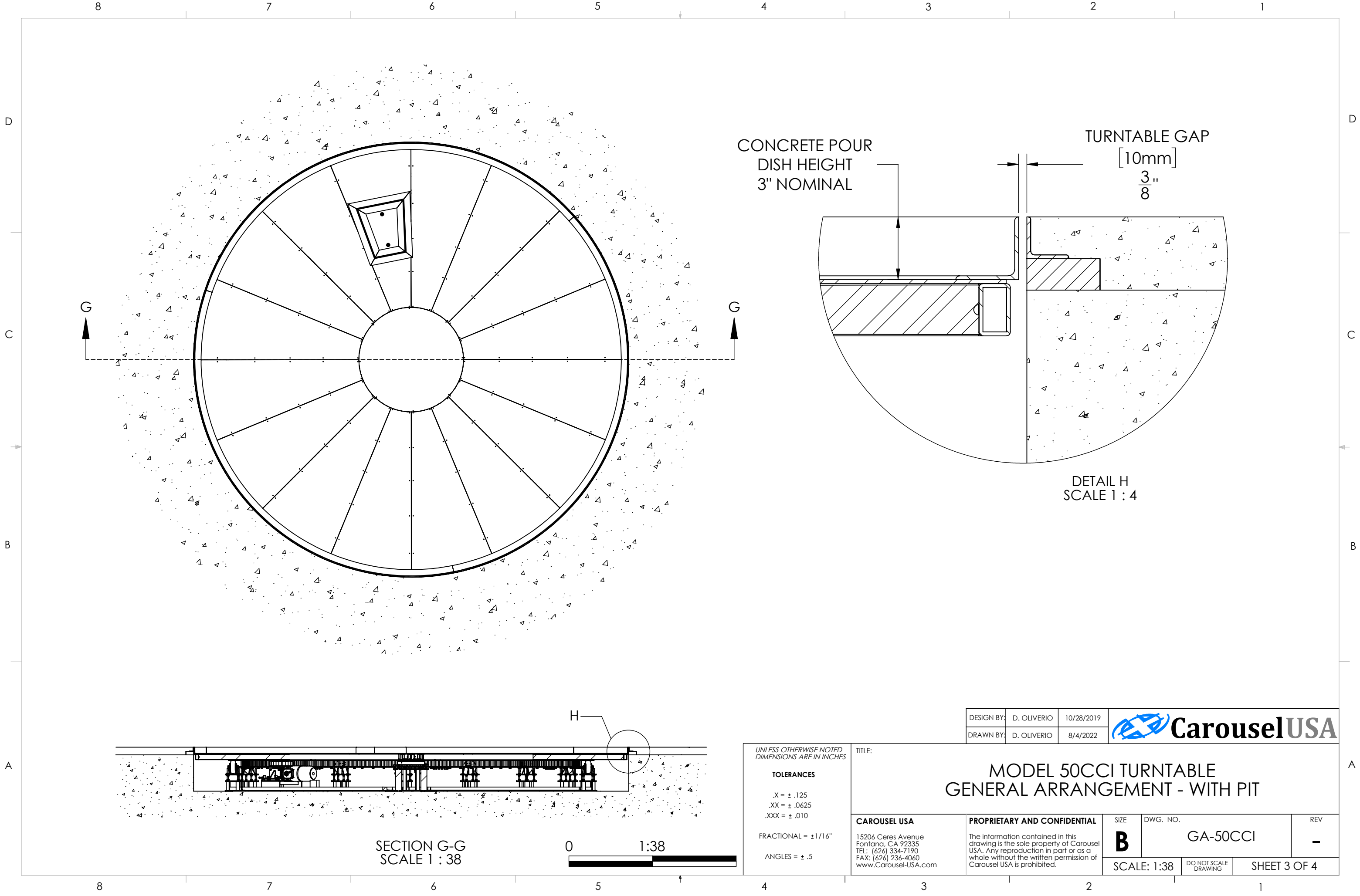
**TOLERANCES**

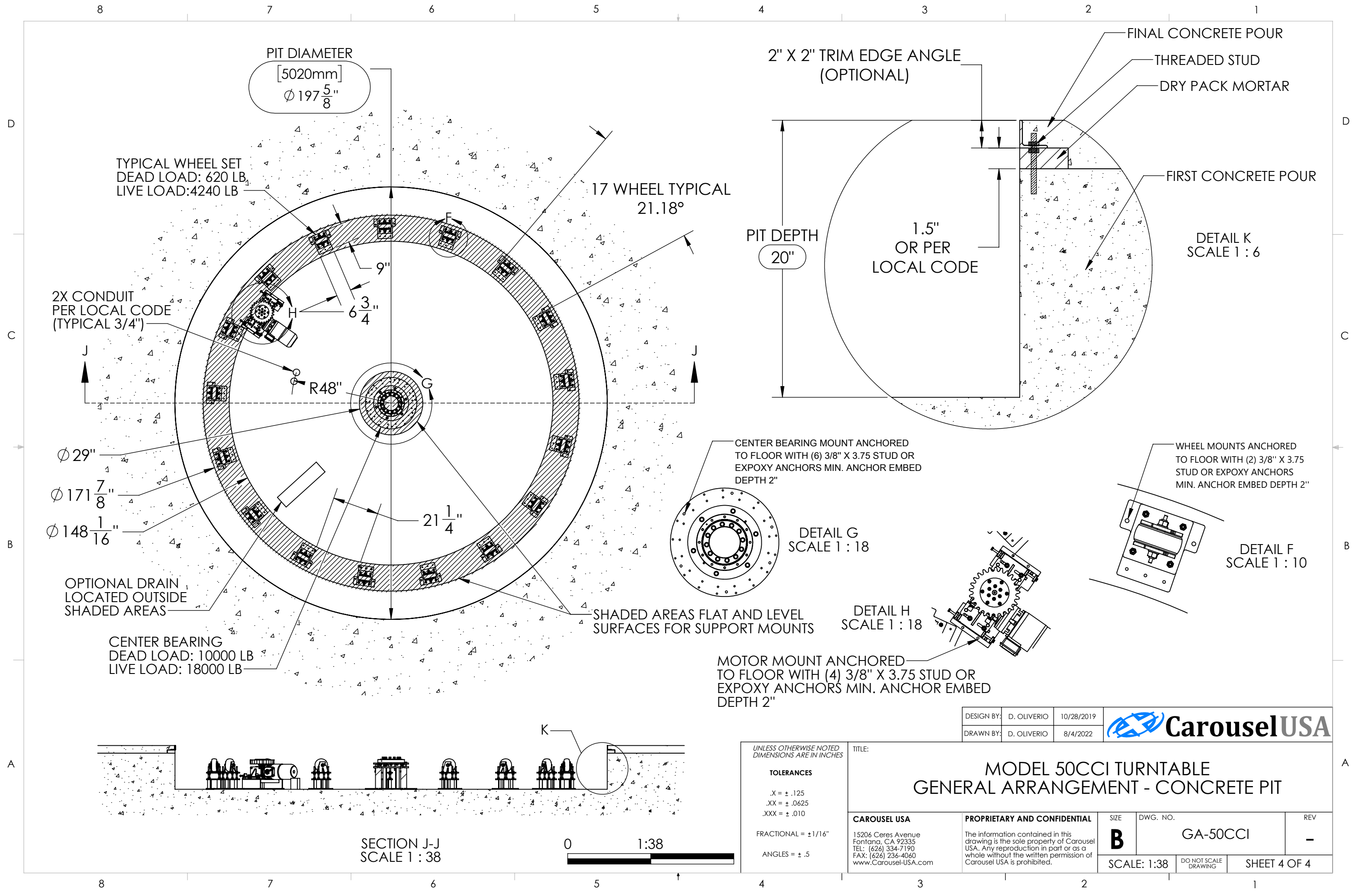
.X = ± .125  
.XX = ± .0625  
.XXX = ± .010

FRACTIONAL = ± 1/16"

ANGLES = ± .5

TITLE: <b>MODEL 50CCI TURNTABLE GENERAL ARRANGEMENT - DIMENSIONS</b>			
<b>CAROUSEL USA</b> 15206 Ceres Avenue Fontana, CA 92335 TEL: (626) 334-7190 FAX: (626) 236-4060 www.Carousel-USA.com		<b>PROPRIETARY AND CONFIDENTIAL</b> The information contained in this drawing is the sole property of Carousel USA. Any reproduction in part or as a whole without the written permission of Carousel USA is prohibited.	
DESIGN BY: D. OLIVERIO DRAWN BY: D. OLIVERIO	10/28/2019 8/4/2022	SIZE <b>B</b>	DWG. NO. GA-50CCI
SCALE: 1:30		DO NOT SCALE DRAWING	REV -
SHEET 2 OF 4			





D

C

B

A

D

C

B

A

PIT DIAMETER  
[5020mm]  
Ø 197 5/8"

2" X 2" TRIM EDGE ANGLE  
(OPTIONAL)

FINAL CONCRETE POUR

THREADED STUD

DRY PACK MORTAR

FIRST CONCRETE POUR

DETAIL K  
SCALE 1 : 6

PIT DEPTH  
20"

1.5"  
OR PER  
LOCAL CODE

TYPICAL WHEEL SET  
DEAD LOAD: 620 LB  
LIVE LOAD: 4240 LB

17 WHEEL TYPICAL  
21.18°

2X CONDUIT  
PER LOCAL CODE  
(TYPICAL 3/4")

Ø 29"

Ø 171 7/8"

Ø 148 1/16"

OPTIONAL DRAIN  
LOCATED OUTSIDE  
SHADED AREAS

CENTER BEARING  
DEAD LOAD: 10000 LB  
LIVE LOAD: 18000 LB

CENTER BEARING MOUNT ANCHORED  
TO FLOOR WITH (6) 3/8" X 3.75 STUD OR  
EXPOXY ANCHORS MIN. ANCHOR EMBED  
DEPTH 2"

DETAIL G  
SCALE 1 : 18

SHADED AREAS FLAT AND LEVEL  
SURFACES FOR SUPPORT MOUNTS

DETAIL H  
SCALE 1 : 18

MOTOR MOUNT ANCHORED  
TO FLOOR WITH (4) 3/8" X 3.75 STUD OR  
EXPOXY ANCHORS MIN. ANCHOR EMBED  
DEPTH 2"

WHEEL MOUNTS ANCHORED  
TO FLOOR WITH (2) 3/8" X 3.75  
STUD OR EXPOXY ANCHORS  
MIN. ANCHOR EMBED DEPTH 2"

DETAIL F  
SCALE 1 : 10

SECTION J-J  
SCALE 1 : 38

0 1:38

UNLESS OTHERWISE NOTED  
DIMENSIONS ARE IN INCHES

TOLERANCES

.X = ± .125

.XX = ± .0625

.XXX = ± .010

FRACTIONAL = ± 1/16"

ANGLES = ± .5

TITLE:

MODEL 50CCI TURNTABLE  
GENERAL ARRANGEMENT - CONCRETE PIT

CAROUSEL USA

15206 Ceres Avenue  
Fontana, CA 92335  
TEL: (626) 334-7190  
FAX: (626) 236-4060  
www.Carousel-USA.com

PROPRIETARY AND CONFIDENTIAL

The information contained in this  
drawing is the sole property of Carousels  
USA. Any reproduction in part or as a  
whole without the written permission of  
Carousels USA is prohibited.

SIZE

B

DWG. NO.

GA-50CCI

REV

-

SCALE: 1:38

DO NOT SCALE  
DRAWING

SHEET 4 OF 4

