

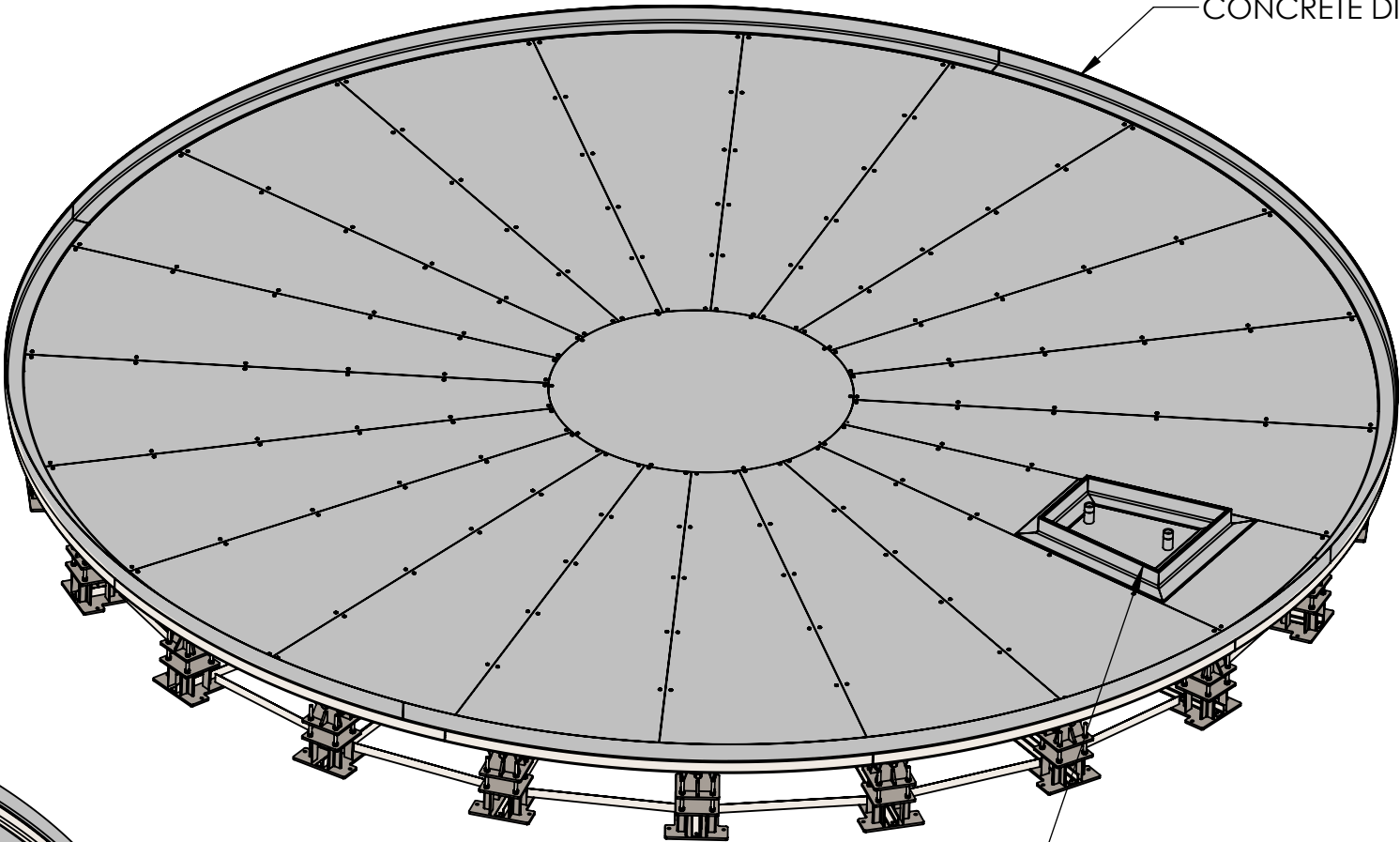
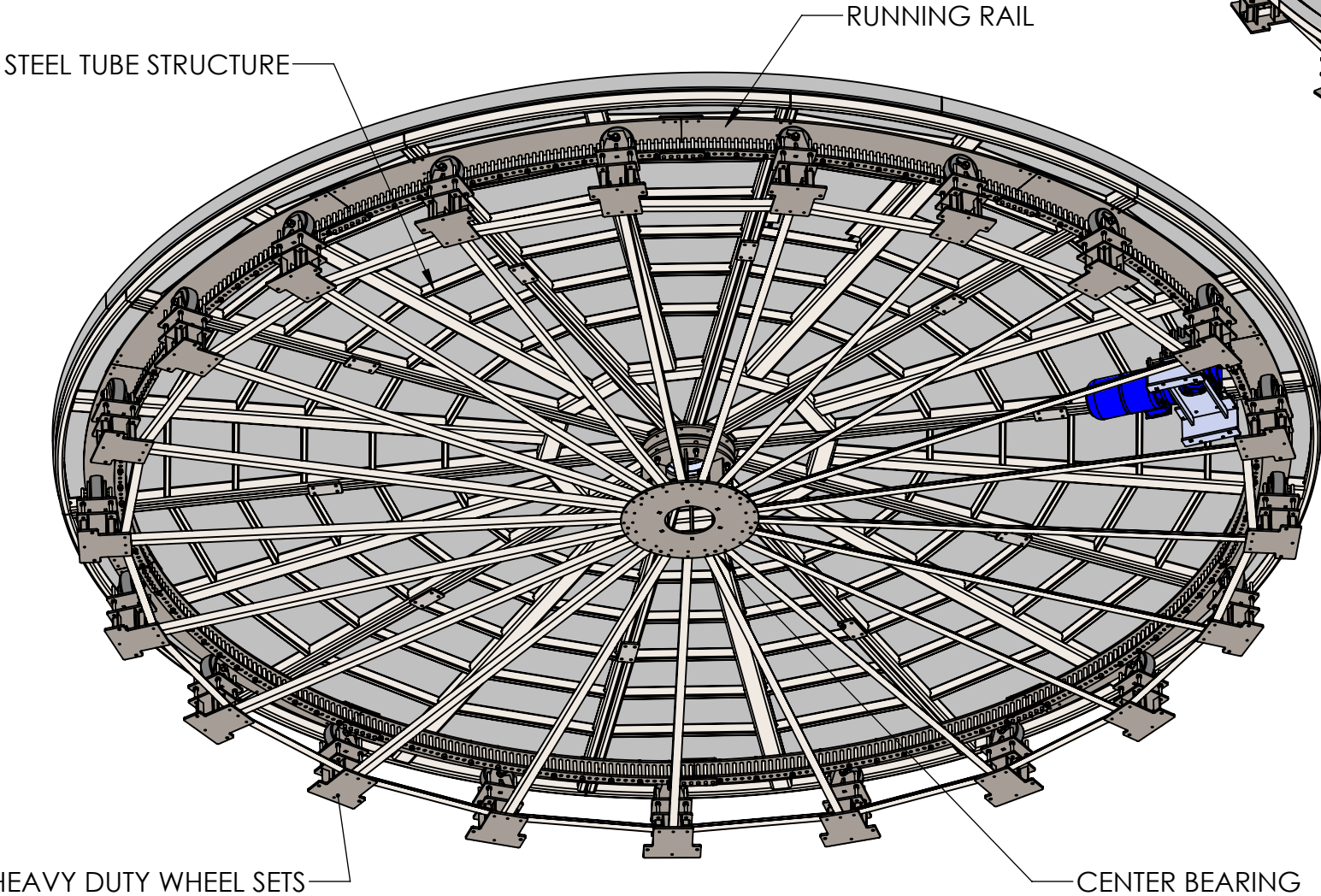
SPECIFICATIONS	
TURNABLE DIAMETER: 216 $\frac{9}{16}$ " [5500mm]	
TURNABLE HEIGHT: 20"	
TURNABLE SPEED: 0.2-1.0 RPM	
CAPACITY: 10,000 LBS	
MOTOR AND DRIVE: NORD 1.5 HP 230V/3Φ/60Hz @ 4.3 FLA	

D

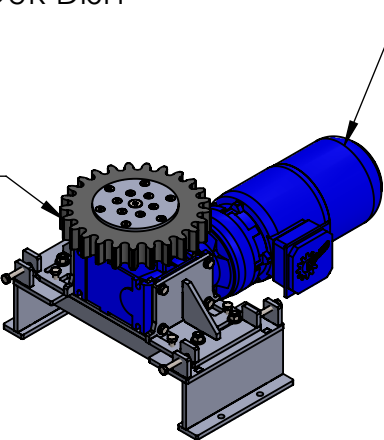
C

B

A



PIN-GEAR DRIVE
PROVIDING SMOOTH, RELIABLE,
AND MAINTENANCE FREE OPERATION

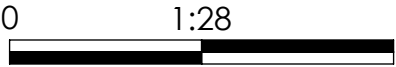


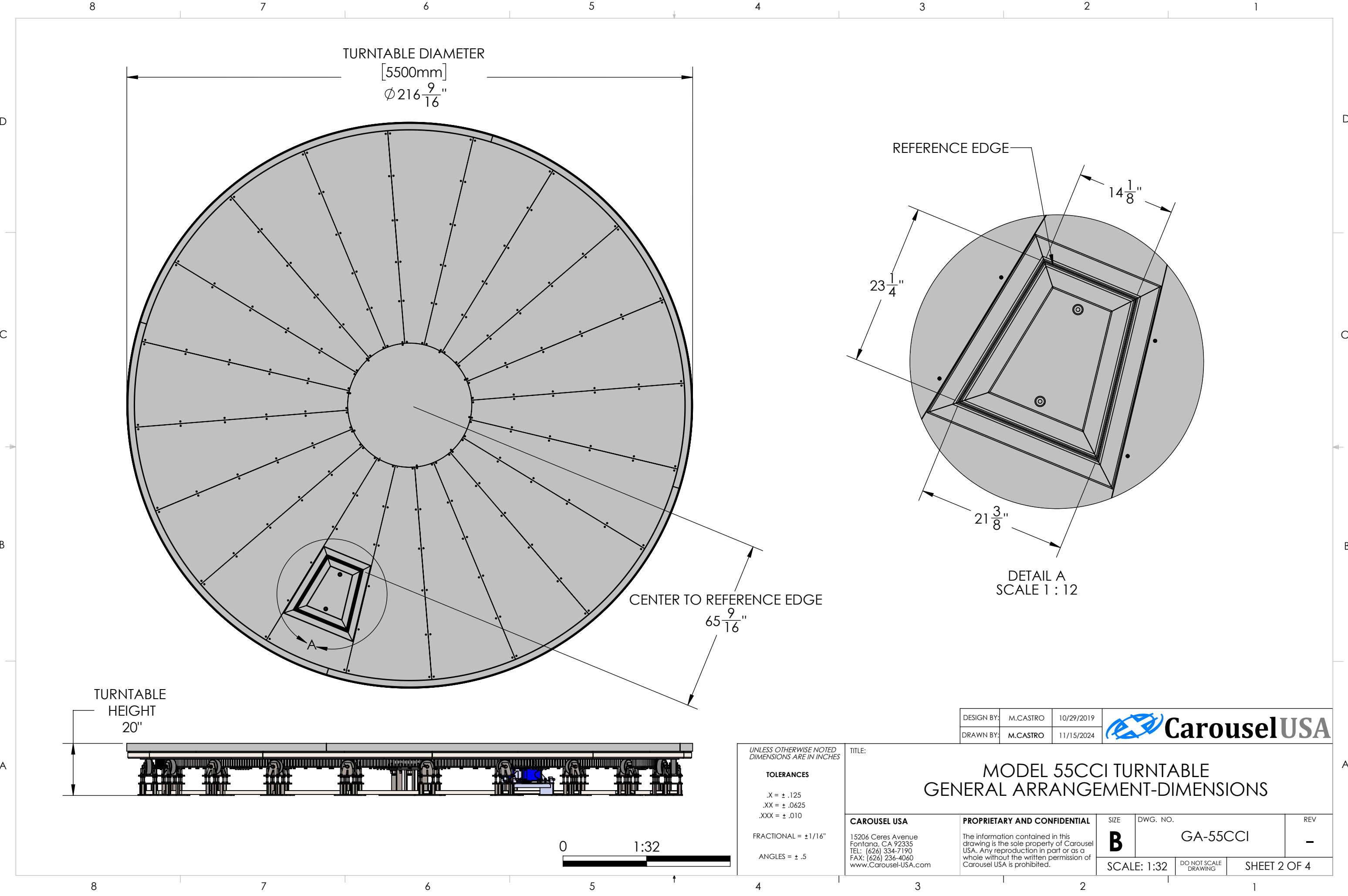
DESIGN BY:	M.CASTRO	10/29/2019
DRAWN BY:	M.CASTRO	11/15/2024

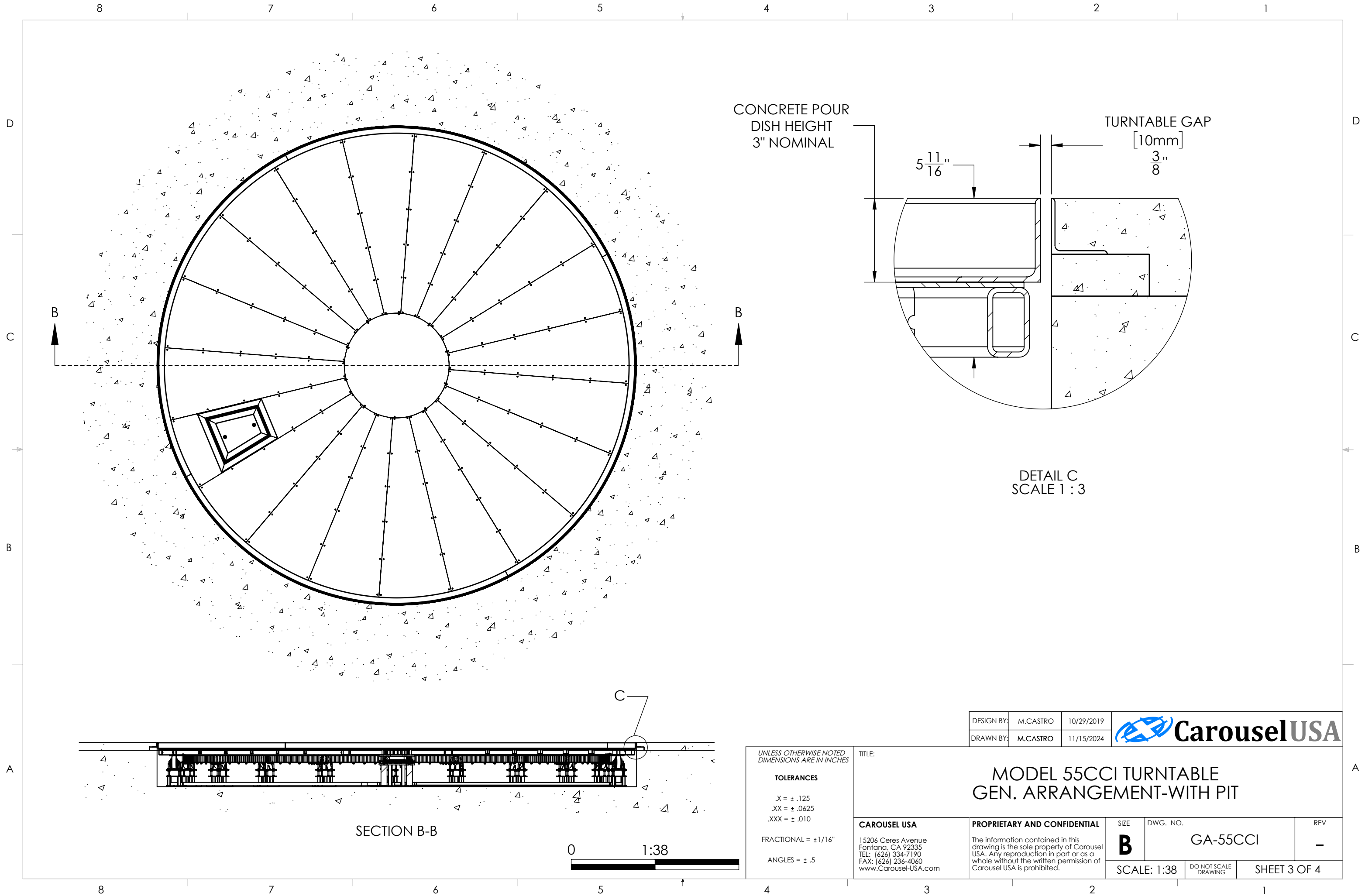


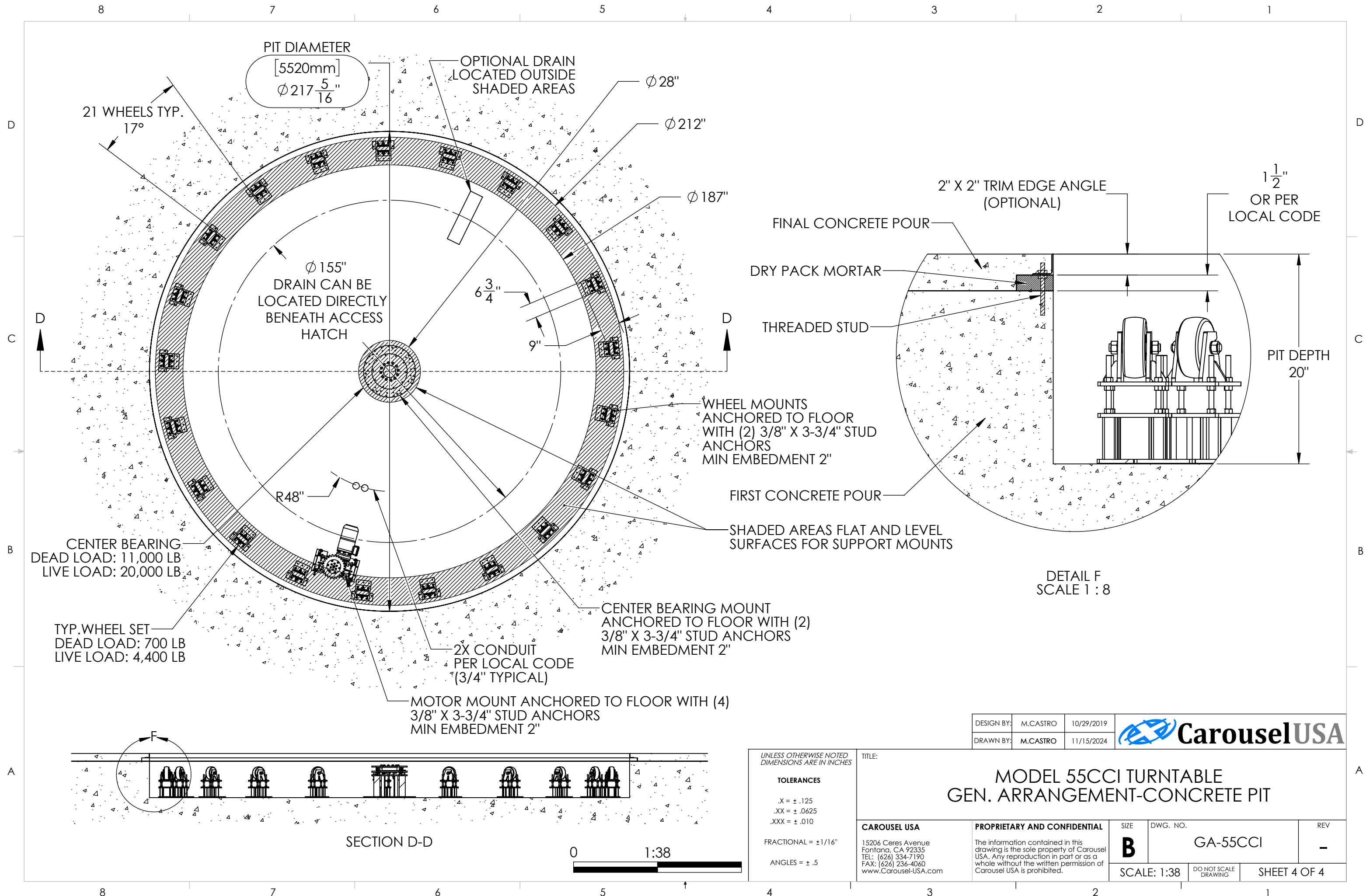
UNLESS OTHERWISE NOTED DIMENSIONS ARE IN INCHES	
TOLERANCES	
.X = ± .125	
.XX = ± .0625	
.XXX = ± .010	
FRACTIONAL = ± 1/16"	
ANGLES = ± .5	

TITLE:		MODEL 55CCI TURNTABLE GENERAL ARRANGEMENT-OVERVIEW		
CAROUSEL USA	PROPRIETARY AND CONFIDENTIAL	SIZE	DWG. NO.	REV
15206 Ceres Avenue Fontana, CA 92335 TEL: (626) 334-7190 FAX: (626) 236-4060 www.Carousel-USA.com	The information contained in this drawing is the sole property of Carousel USA. Any reproduction in part or as a whole without the written permission of Carousel USA is prohibited.	B	GA-55CCI	-
SCALE: 1:28		DO NOT SCALE DRAWING	SHEET 1 OF 4	









UNLESS OTHERWISE NOTED
DIMENSIONS ARE IN INCHES

TOLERANCES
.X = ± .125
.XX = ± .0625
.XXX = ± .010
FRACTIONAL = ± 1/16"
ANGLES = ± .5

TITLE:					MODEL 55CCI TURNTABLE GEN. ARRANGEMENT-CONCRETE PIT				
CAROUSEL USA		PROPRIETARY AND CONFIDENTIAL		SIZE	DWG. NO.		REV		
15206 Ceres Avenue Fontana, CA 92335 TEL: (626) 334-7190 FAX: (626) 236-4060 www.Carousel-USA.com		The information contained in this drawing is the sole property of Carousel USA. Any reproduction in part or as a whole without the written permission of Carousel USA is prohibited.		B	GA-55CCI		—		
				SCALE: 1:38		DO NOT SCALE DRAWING		SHEET 4 OF 4	

