

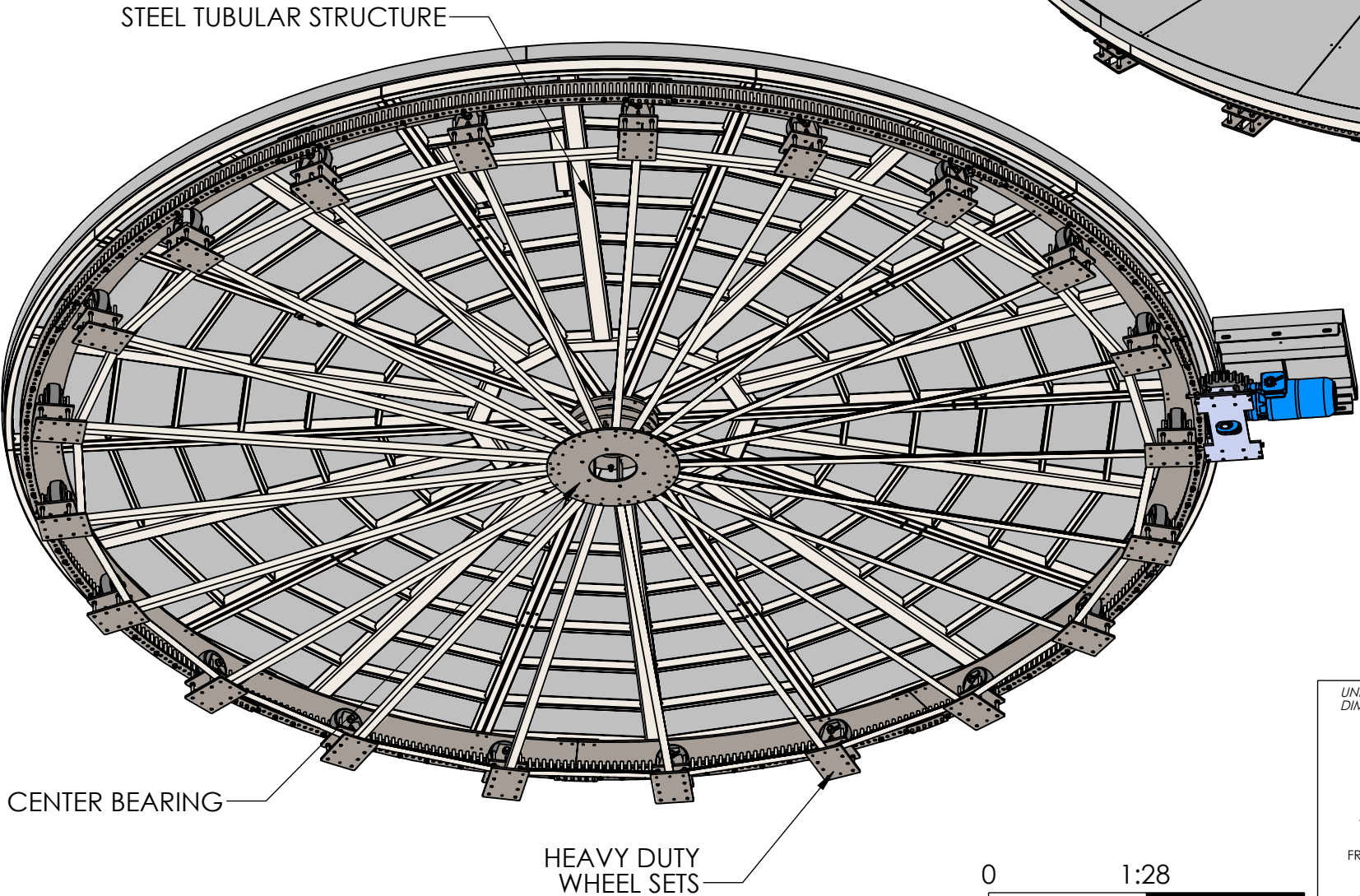
SPECIFICATIONS	
TURNTABLE DIMETER: 216 ⁹ / ₁₆ " [5500mm]	
TURNTABLE HEIGHT: 15 ³ / ₄ "	
TURNTABLE SPEED: 0.2-1.0 RPM	
CAPACITY: 10,000 LB	
MOTOR AND DRIVE: 1.5 HP 230V/3Φ/60Hz @ 4.3 FLA	

D

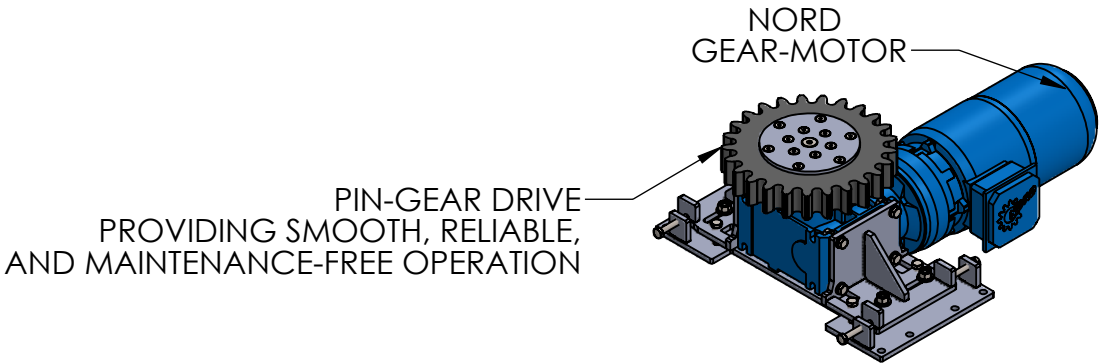
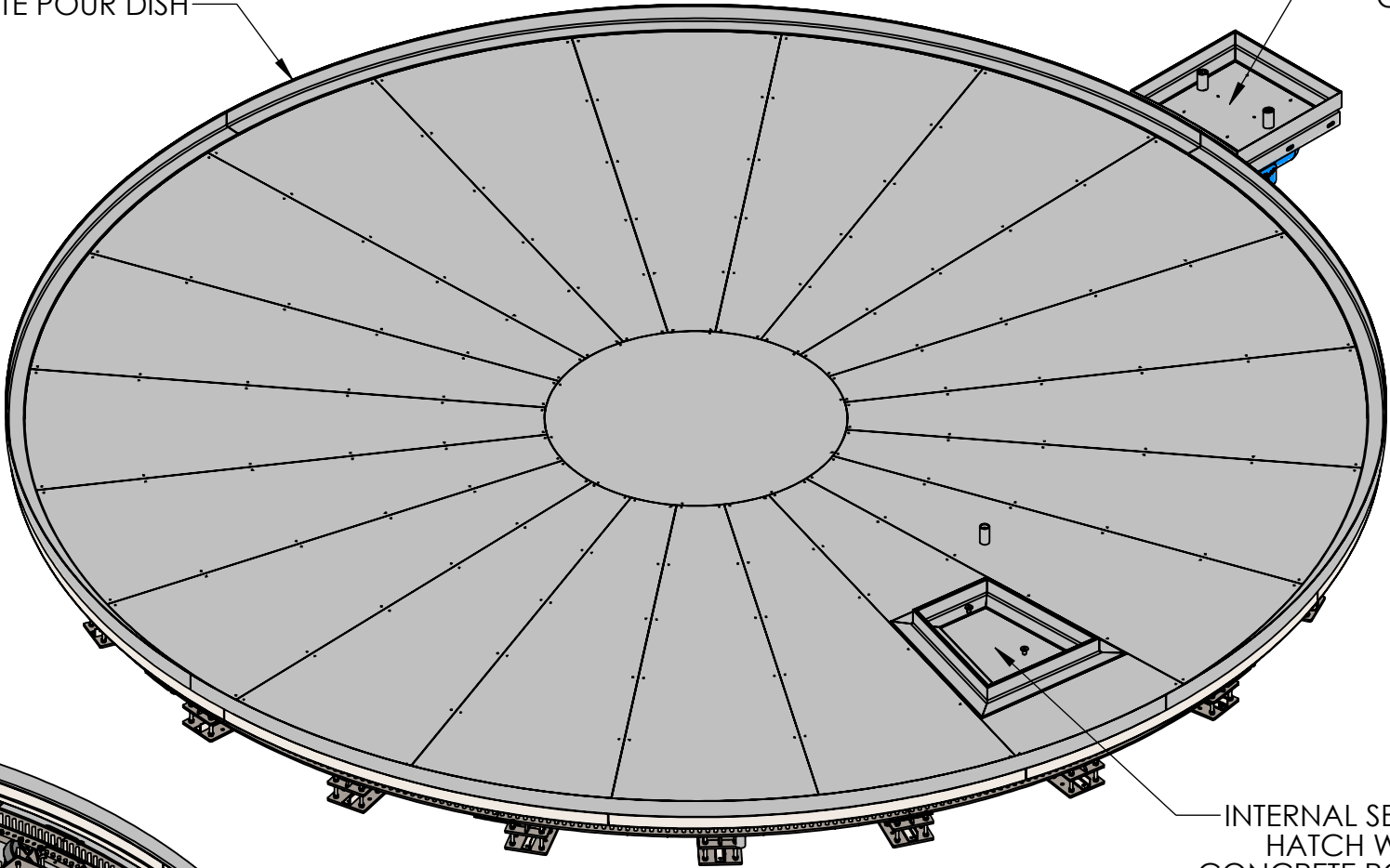
C

B

A



CONCRETE POUR DISH



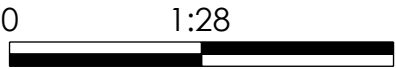
DESIGN BY:	M.CASTRO	11/12/2019	
DRAWN BY:	M.CASTRO	11/14/2022	

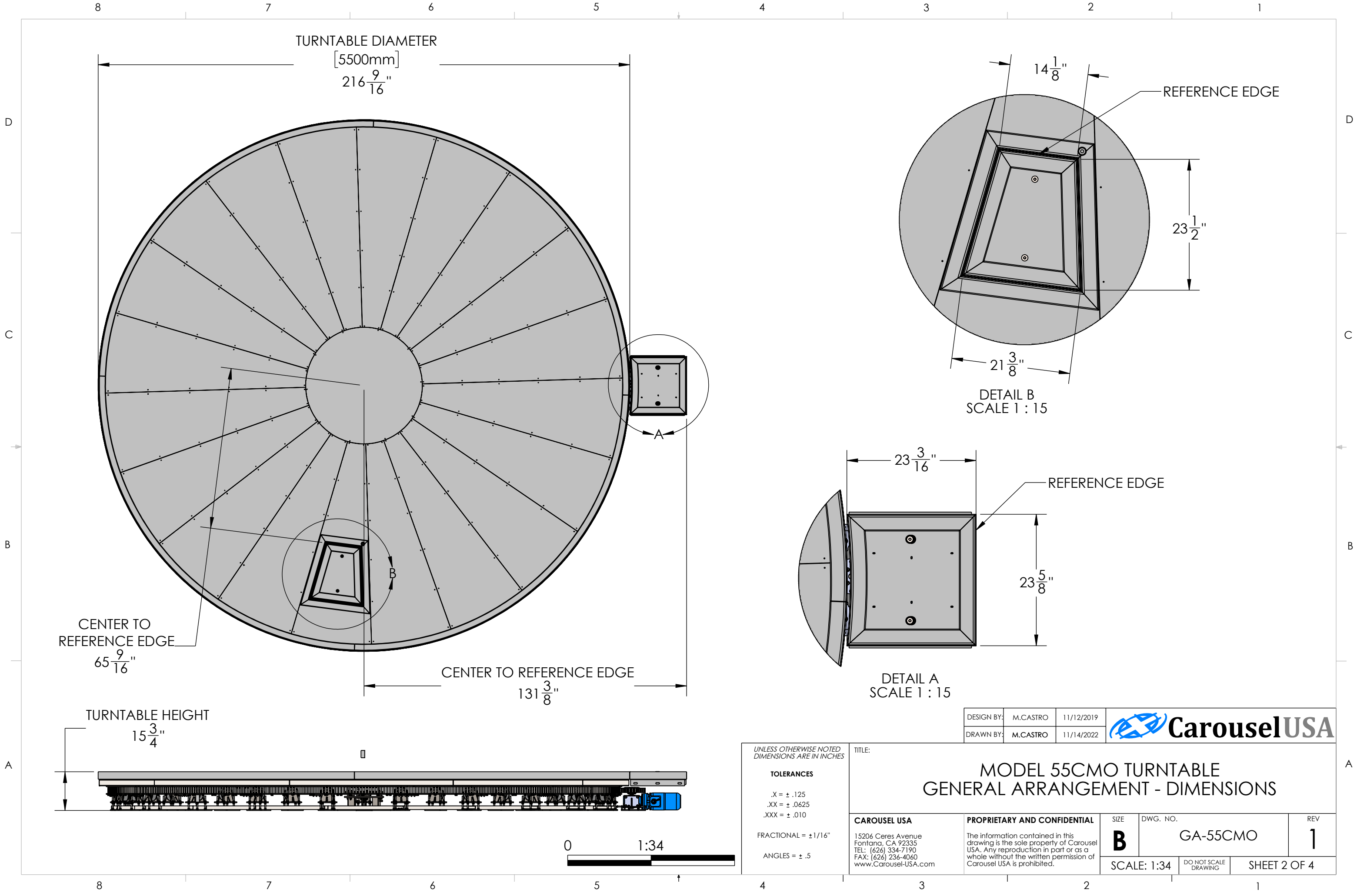
UNLESS OTHERWISE NOTED DIMENSIONS ARE IN INCHES	
TOLERANCES	
.X = ± .125	
.XX = ± .0625	
.XXX = ± .010	
FRACTIONAL = ± 1/16"	
ANGLES = ± .5	

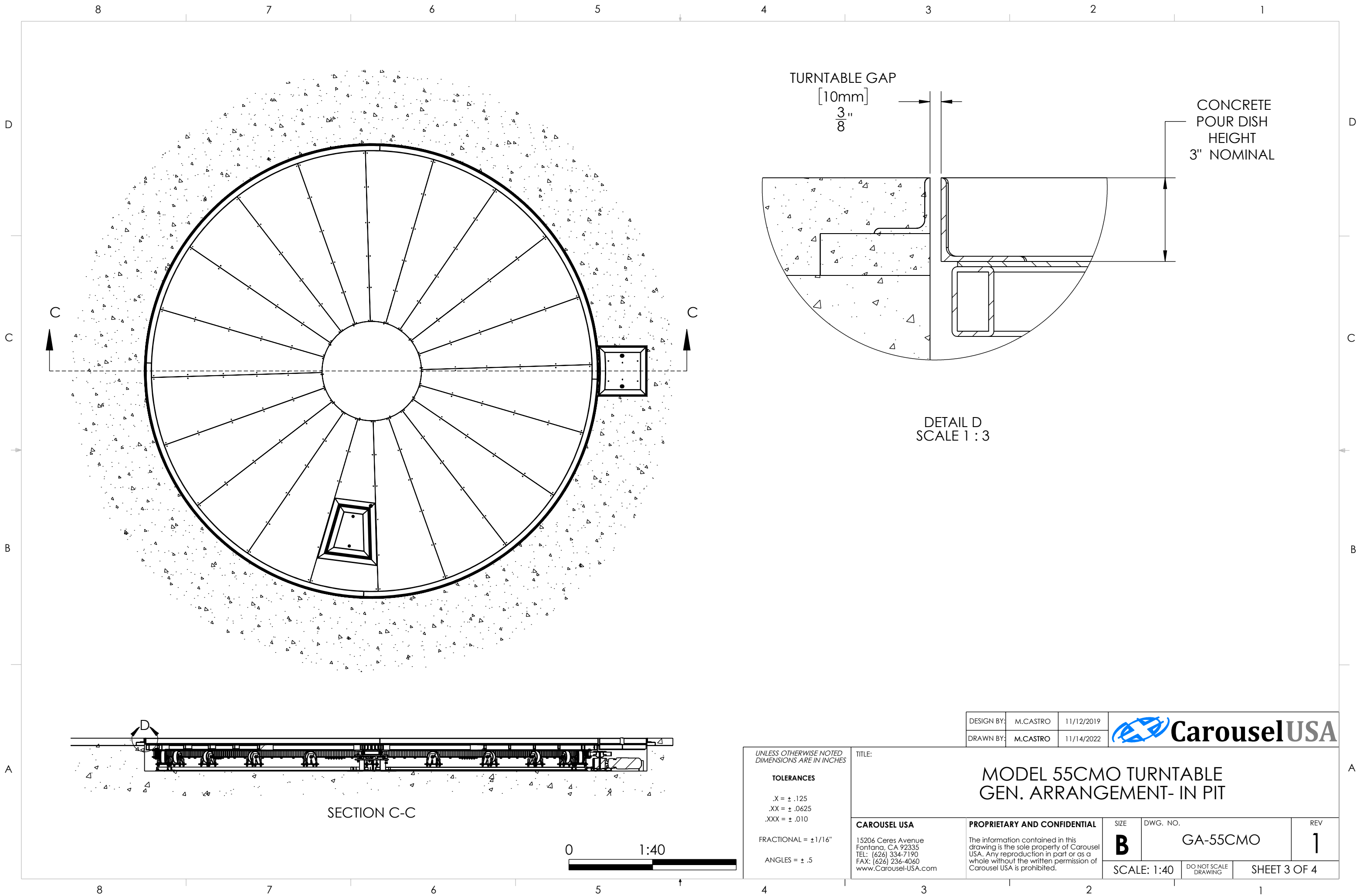
TITLE:

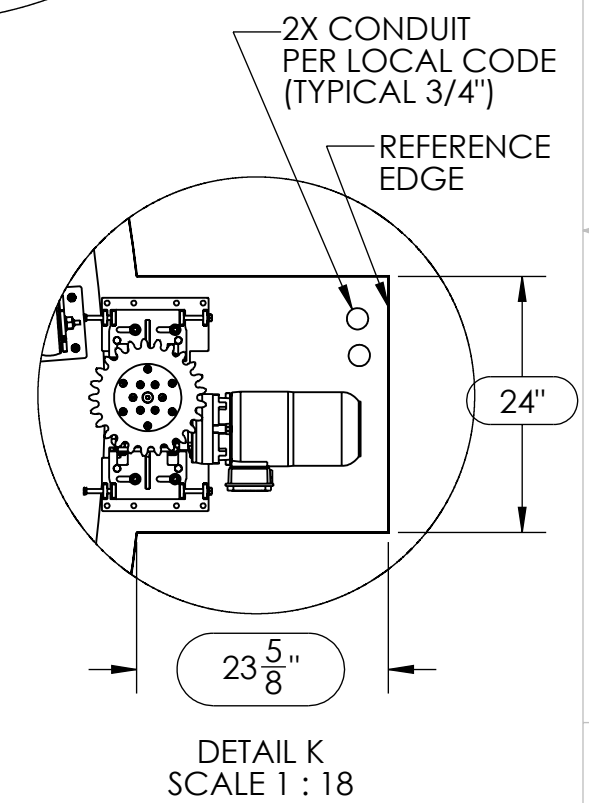
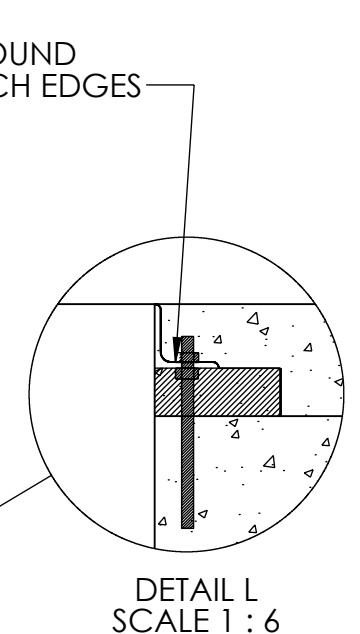
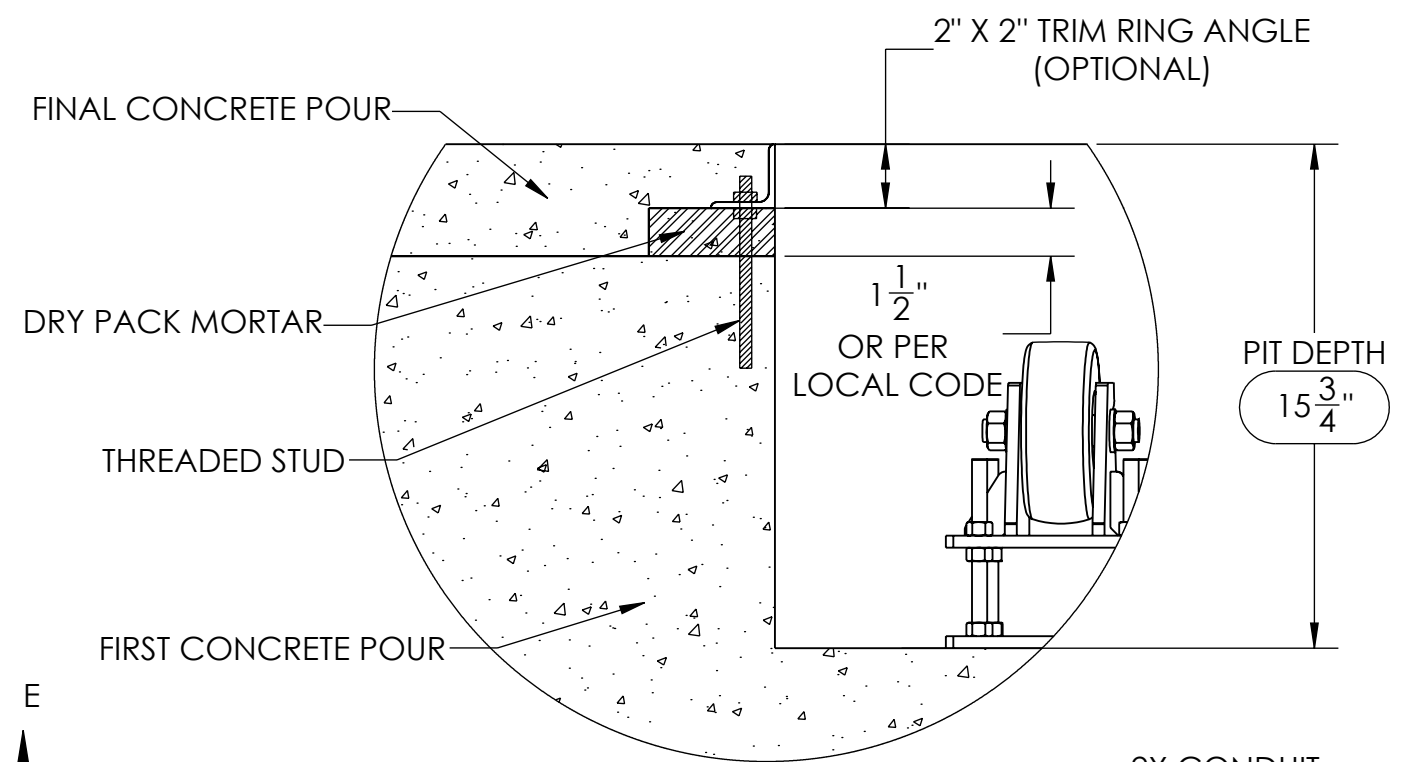
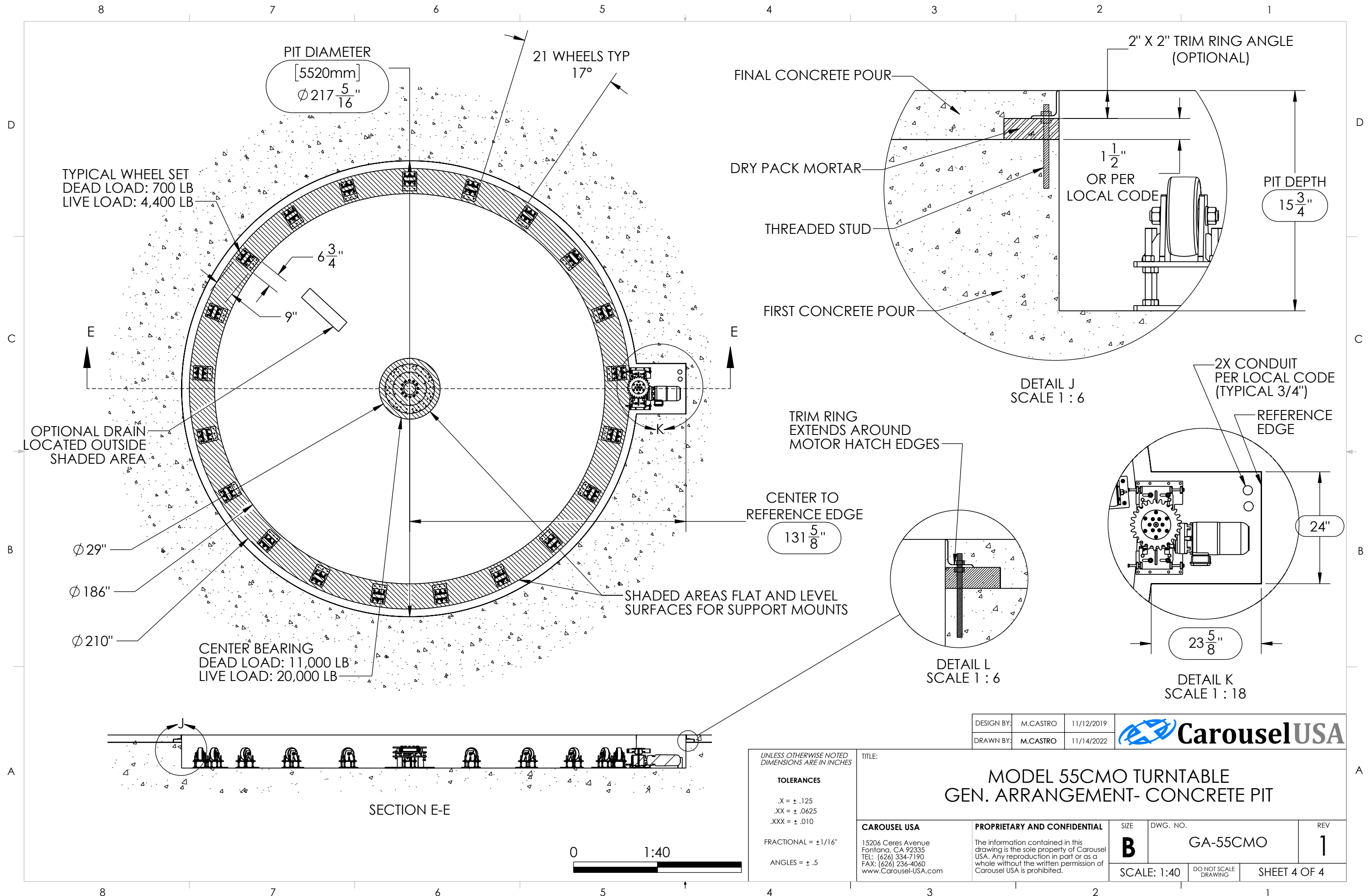
MODEL 55CMO TURNTABLE
GENERAL ARRANGEMENT - OVERVIEW

CAROUSEL USA	PROPRIETARY AND CONFIDENTIAL	SIZE	DWG. NO.		REV
15206 Ceres Avenue Fontana, CA 92335 TEL: (626) 334-7190 FAX: (626) 236-4060 www.Carousel-USA.com	The information contained in this drawing is the sole property of Carousel USA. Any reproduction in part or as a whole without the written permission of Carousel USA is prohibited.	B	GA-55CMO		1
		SCALE: 1:28	DO NOT SCALE DRAWING	SHEET 1 OF 4	









UNLESS OTHERWISE NOTED DIMENSIONS ARE IN INCHES		TITLE: MODEL 55CMO TURNTABLE GEN. ARRANGEMENT- CONCRETE PIT	
TOLERANCES .X = ± .125 .XX = ± .0625 .XXX = ± .010 FRACTIONAL = ± 1/16" ANGLES = ± .5		CAROUSEL USA 15206 Ceres Avenue Fontana, CA 92335 TEL: (626) 334-7190 FAX: (626) 236-4060 www.Carousel-USA.com	
PROPRIETARY AND CONFIDENTIAL The information contained in this drawing is the sole property of Carousel USA. Any reproduction in part or as a whole without the written permission of Carousel USA is prohibited.		SIZE B	DWG. NO. GA-55CMO
SCALE: 1:40		DO NOT SCALE DRAWING	REV 1
		SHEET 4 OF 4	

