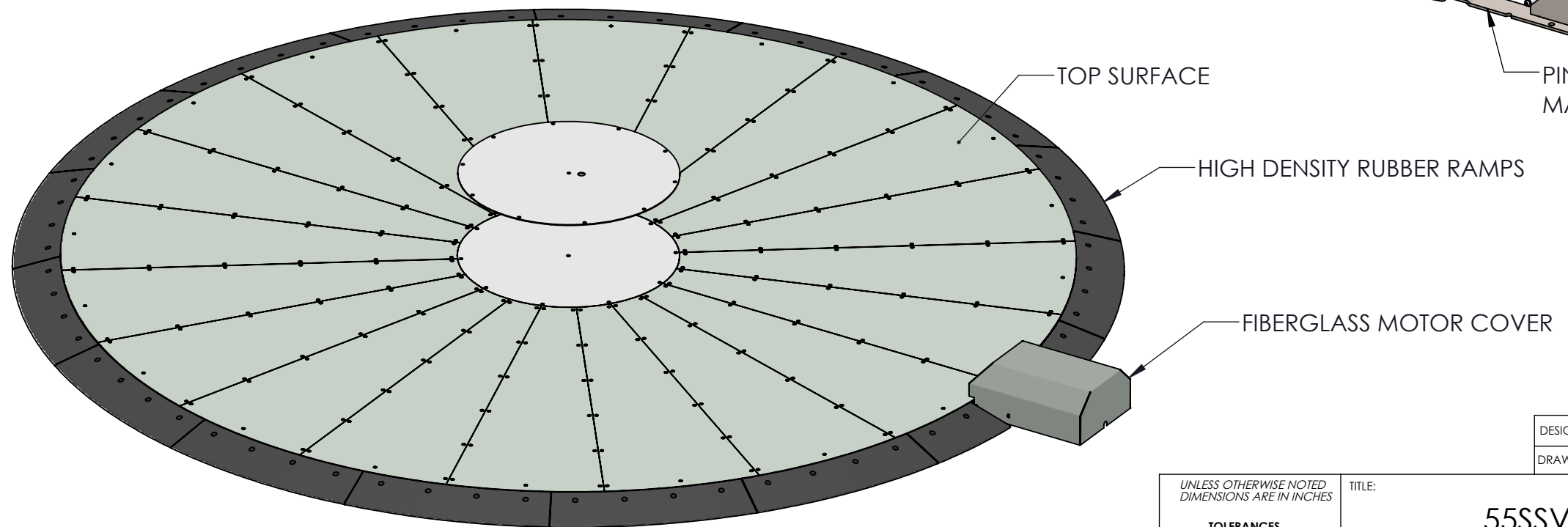
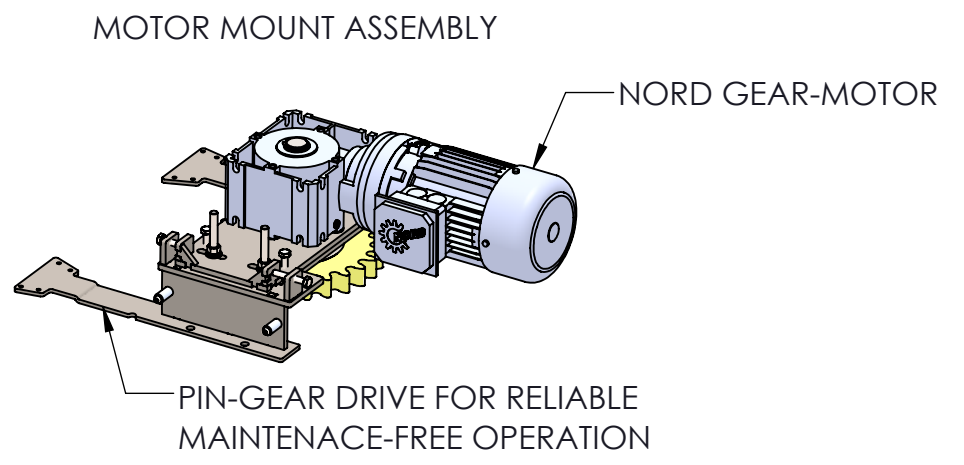
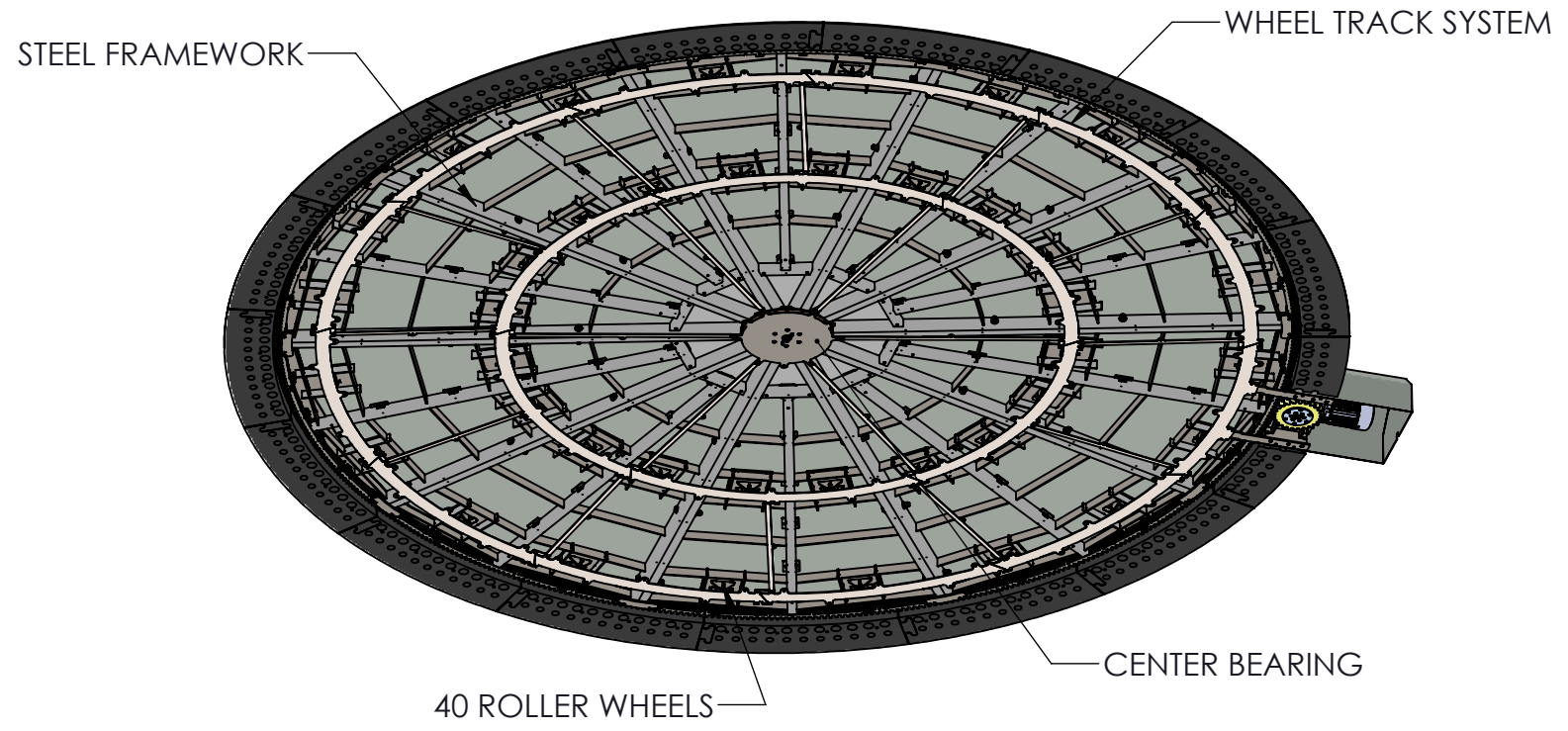


SPECIFICATIONS

TURNTABLE DIAMETER: 216 ⁹ / ₁₆ " [5500mm]
TURNTABLE HEIGHT: 3 ¹ / ₄ "
TURNTABLE SPEED: 0.2-1.0 RPM
TURNTABLE CAPACITY: 10,000 LB
MOTOR: NORD 1.5 HP 230/3/60 @ 4.5 FLA
ASSEMBLED TURNTABLE WEIGHT: 4,650 LBS
ASSMEBLY P/N: 55400

TOP SURFACES AVAILABLE IN SMOOTH OR DIAMOND TREAD

3/16" CARBON STEEL
1/4" ALUMNUM
3/16" STAINLESS STEEL



DESIGN BY: D. OLIVERIO	12/20/2023
DRAWN BY: A. HOVSEPIAN	5/27/2026



UNLESS OTHERWISE NOTED DIMENSIONS ARE IN INCHES

TOLERANCES

.X = ± .060

.XX = ± .030

.XXX = ± .010

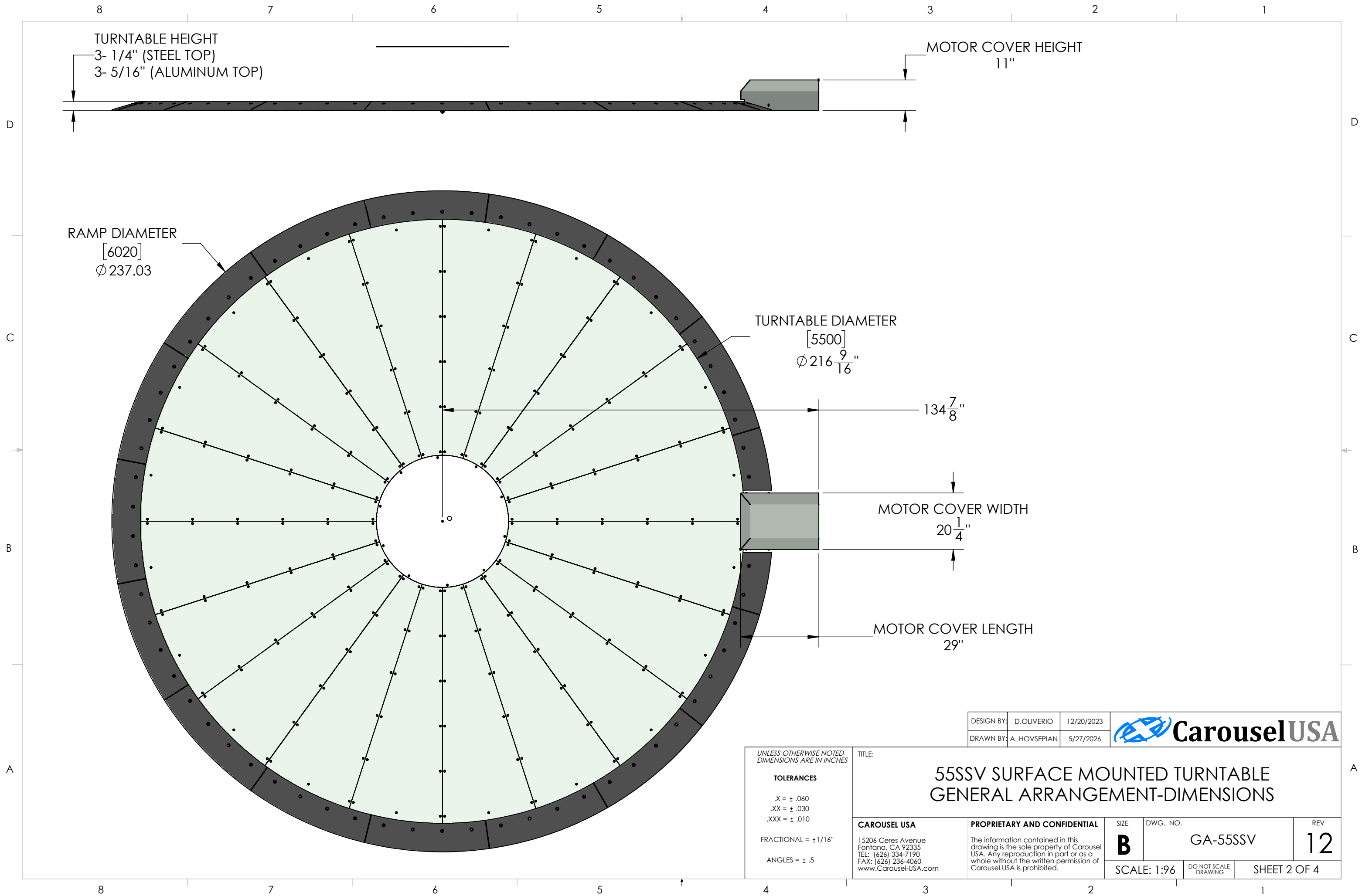
FRACTIONAL = ± 1/16"

ANGLES = ± .5

TITLE:

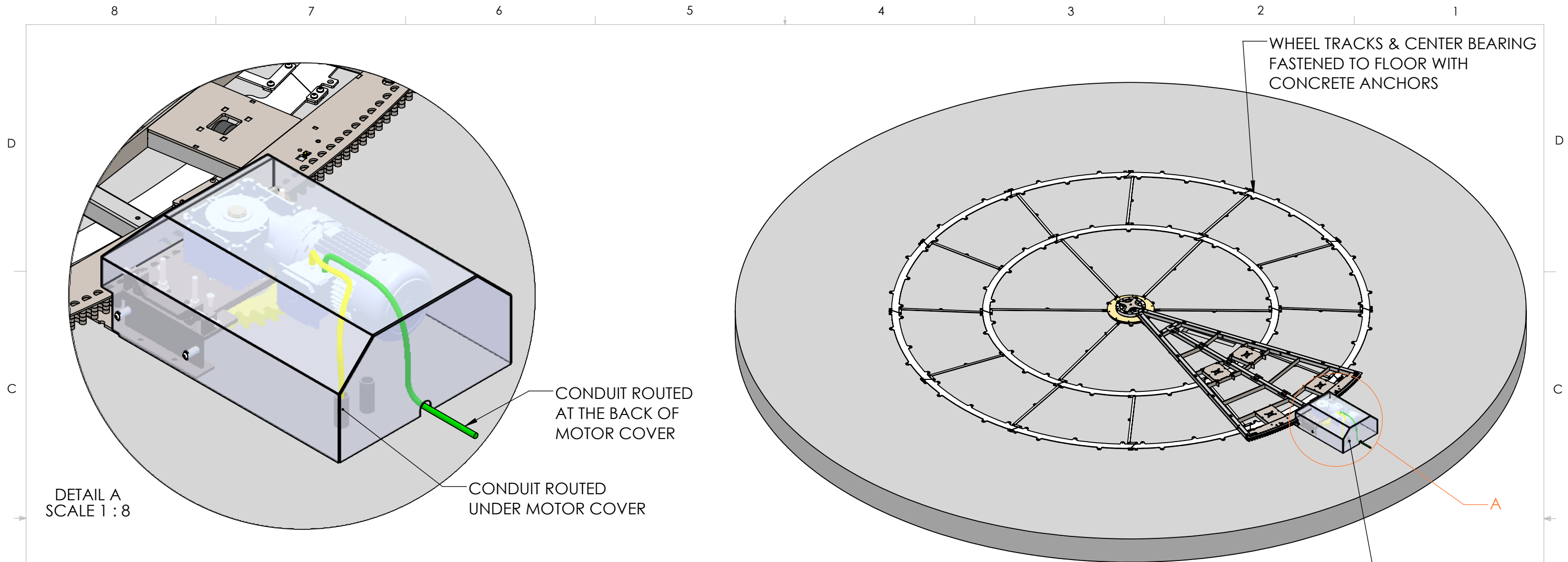
**55SSV SURFACE MOUNTED TURNTABLE
GENERAL ARRANGEMENT-FEATURES**

CAROUSEL USA 15206 Ceres Avenue Fontana, CA 92335 TEL: (626) 334-7190 FAX: (626) 236-4060 www.Carousel-USA.com	PROPRIETARY AND CONFIDENTIAL The information contained in this drawing is the sole property of Carousel USA. Any reproduction in part or as a whole without the written permission of Carousel USA is prohibited.	SIZE B	DWG. NO. GA-55SSV	REV 12
SCALE: 1:96		DO NOT SCALE DRAWING	SHEET 1 OF 4	



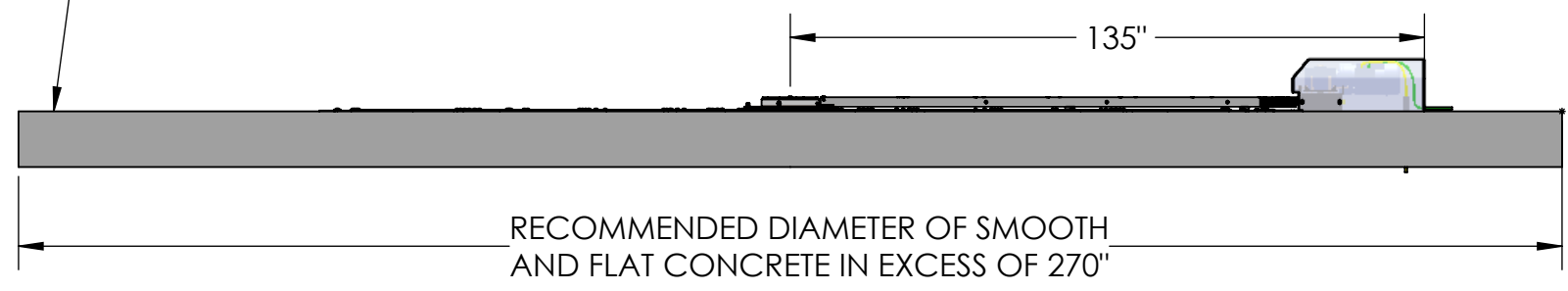
DESIGN BY:	D. OLIVERIO	12/20/2023	
DRAWN BY:	A. HOVSEPIAN	5/27/2026	

UNLESS OTHERWISE NOTED DIMENSIONS ARE IN INCHES				TITLE: 55SSV SURFACE MOUNTED TURNTABLE GENERAL ARRANGEMENT-DIMENSIONS						
TOLERANCES .X = ± .060 .XX = ± .030 .XXX = ± .010 FRACTIONAL = ± 1/16" ANGLES = ± .5				CAROUSEL USA 15206 Ceres Avenue Fontana, CA 92335 TEL: (626) 334-7190 FAX: (626) 236-4060 www.Carousel-USA.com		PROPRIETARY AND CONFIDENTIAL The information contained in this drawing is the sole property of Carousel USA. Any reproduction in part or as a whole without the written permission of Carousel USA is prohibited.		SIZE B	DWG. NO. GA-55SSV	REV 12
				SCALE: 1:96 <small>DO NOT SCALE DRAWING</small>		SHEET 2 OF 4				



DETAIL A
SCALE 1 : 8

FLOOR FLATNESS 1/4" HEIGHT DEVIATION
AND IN ACCORDANCE WITH
55SSV SURFACE MOUNTED TURNTABLE SITE
FLATNESS INSPECTION PROCEDURE DOCUMENT



- NOTES:
1. ELECTRICAL CONDUIT MAY ENTER MOTOR COVER FROM UNDER THE FLOOR OR AT THE BACK
 2. (1) CONDUIT REQUIRED FOR STANDARD CONTROLS (MOTOR POWER ONLY)
 3. (2) CONDUITS REQUIRED FOR MOTION CONTROL (MOTOR POWER & ENCODER FEEDBACK)
 4. LEVEL, SMOOTH CONCRETE ENGINEERED FOR PSF POINT LOADS EQUIVALENT OR SURPASSING THAT OF TURNTABLE EQUIPMENT
 5. SIZE CONDUIT PER LOCAL CODE

DESIGN BY:	D. OLIVERIO	12/20/2023
DRAWN BY:	A. HOVSEPIAN	5/27/2026



UNLESS OTHERWISE NOTED
DIMENSIONS ARE IN INCHES

TOLERANCES

.X = ± .060
.XX = ± .030
.XXX = ± .010

FRACTIONAL = ± 1/16"

ANGLES = ± .5

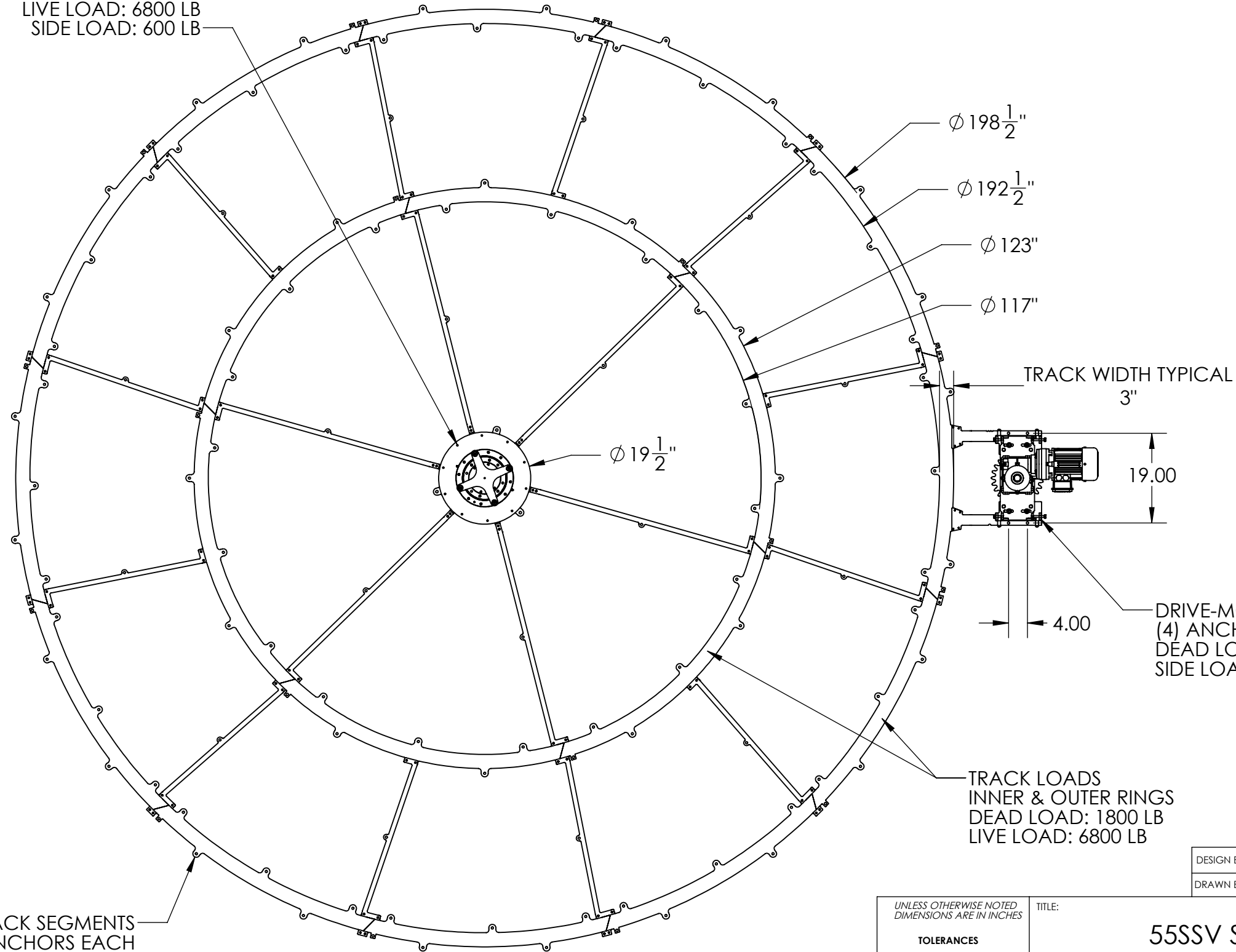
TITLE: **55SSV SURFACE MOUNTED TURNTABLE
GENERAL ARRANGEMENT-FLOOR REQ.**

CAROUSEL USA 15206 Ceres Avenue Fontana, CA 92335 TEL: (626) 334-7190 FAX: (626) 236-4060 www.Carousel-USA.com	PROPRIETARY AND CONFIDENTIAL The information contained in this drawing is the sole property of Carousel USA. Any reproduction in part or as a whole without the written permission of Carousel USA is prohibited.	SIZE B	DWG. NO. GA-55SSV	REV 12
SCALE: 1:96		DO NOT SCALE DRAWING	SHEET 3 OF 4	

8 7 6 5 4 3 2 1

- NOTES:
 1. ALL COMPONENTS TO BE FASTENED TO FLOOR WITH 3/8" X 3.75" WEDGE ANCHORS SUCH AS REDHEAD #WS-3850
 2. MIN EMBED DEPTH 1.75"
 3. TORQUE ANCHORS TO 25 FT. LB.

CENTER BEARING ASSEMBLY:
 (3) ANCHORS
 DEAD LOAD: 1800 LB
 LIVE LOAD: 6800 LB
 SIDE LOAD: 600 LB



DRIVE-MOTOR ASSEMBLY:
 (4) ANCHORS
 DEAD LOAD: 120 LB
 SIDE LOAD: 600 LB

TRACK LOADS
 INNER & OUTER RINGS
 DEAD LOAD: 1800 LB
 LIVE LOAD: 6800 LB

(18) TRACK SEGMENTS
 (5) ANCHORS EACH

DESIGN BY: D. OLIVERIO	12/20/2023	
DRAWN BY: A. HOVSEPIAN	5/27/2026	

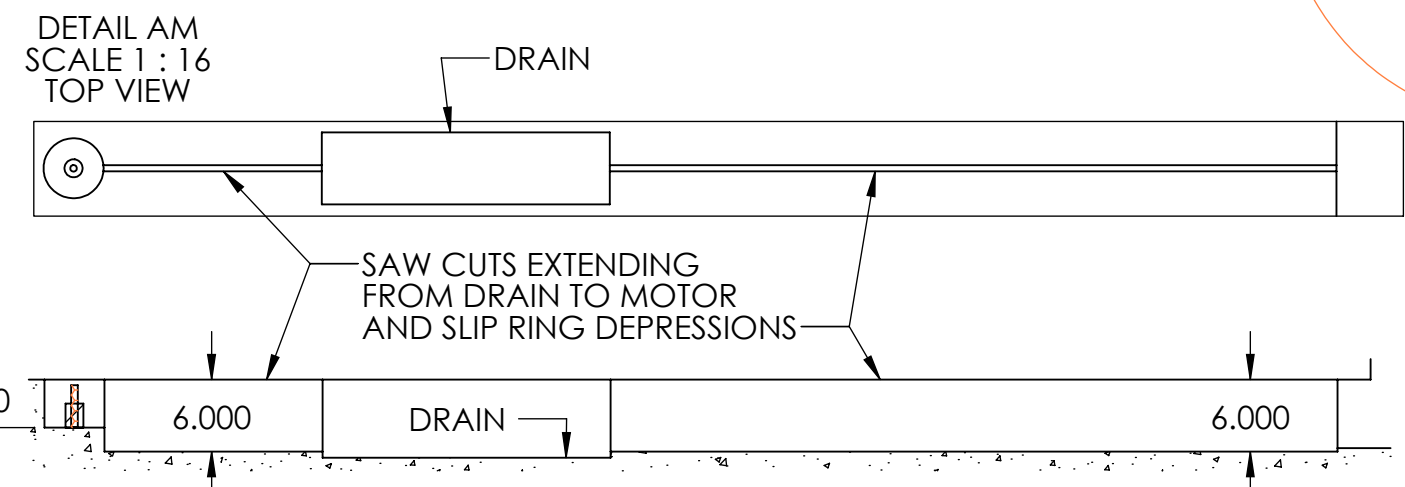
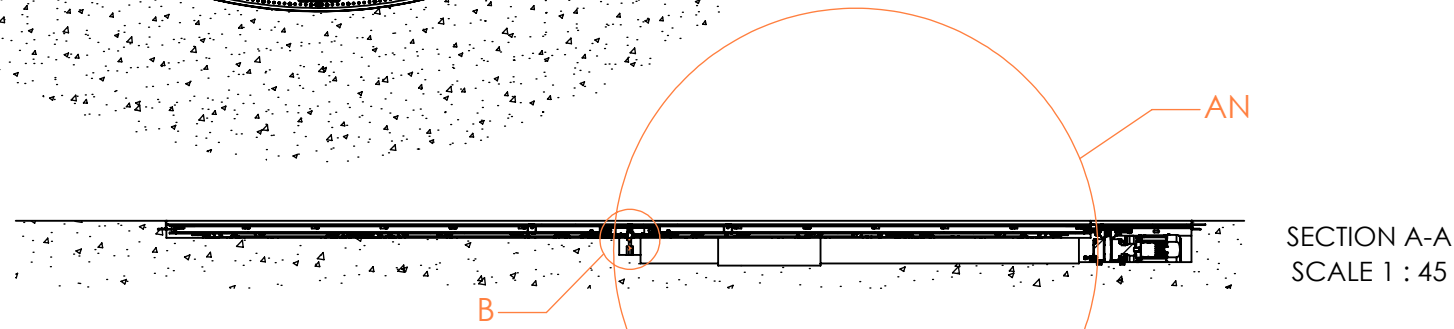
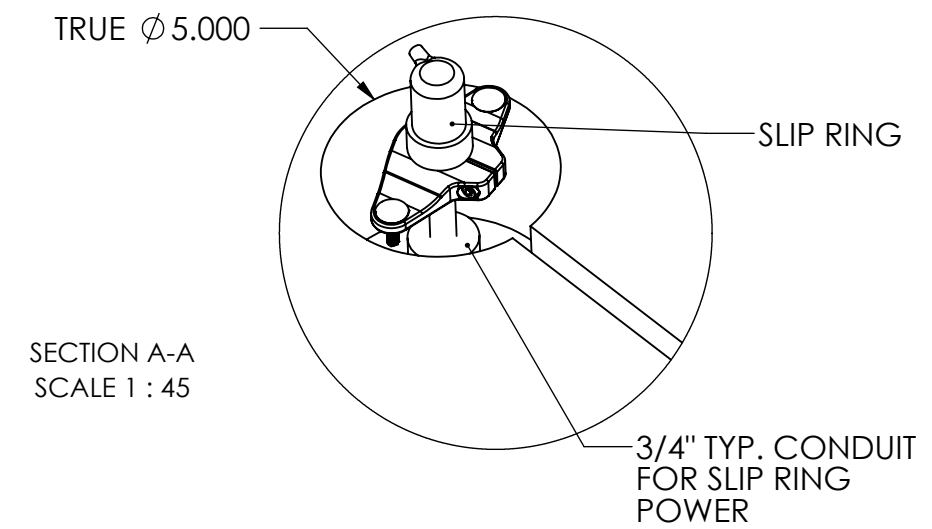
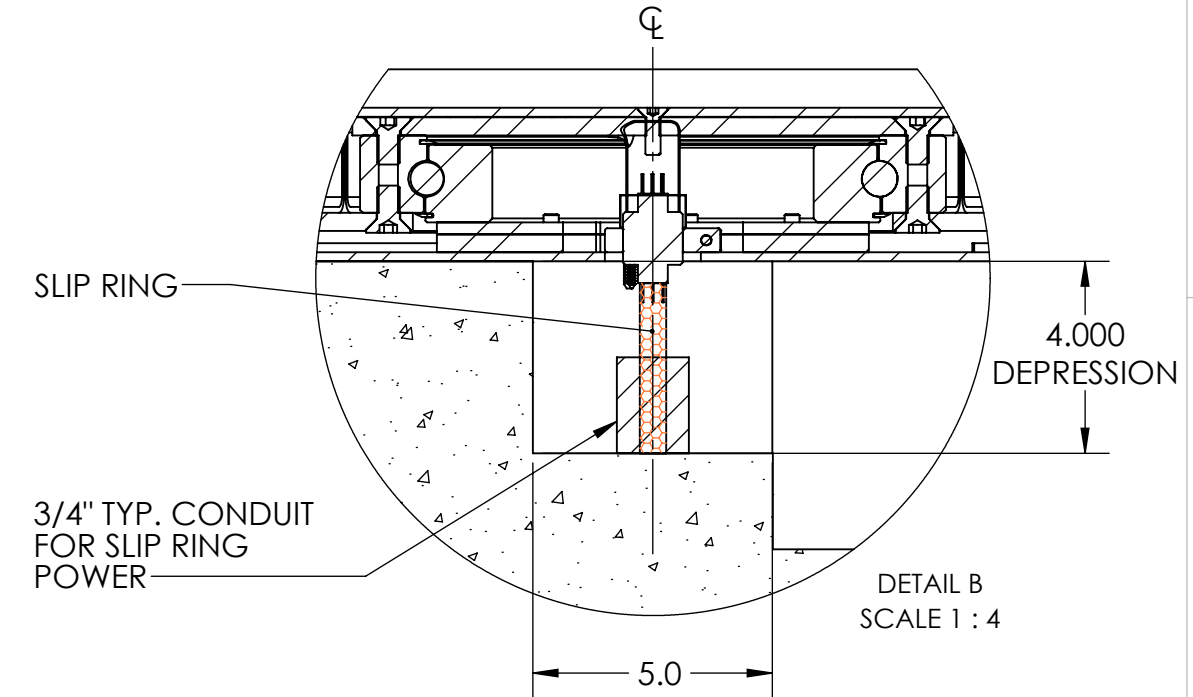
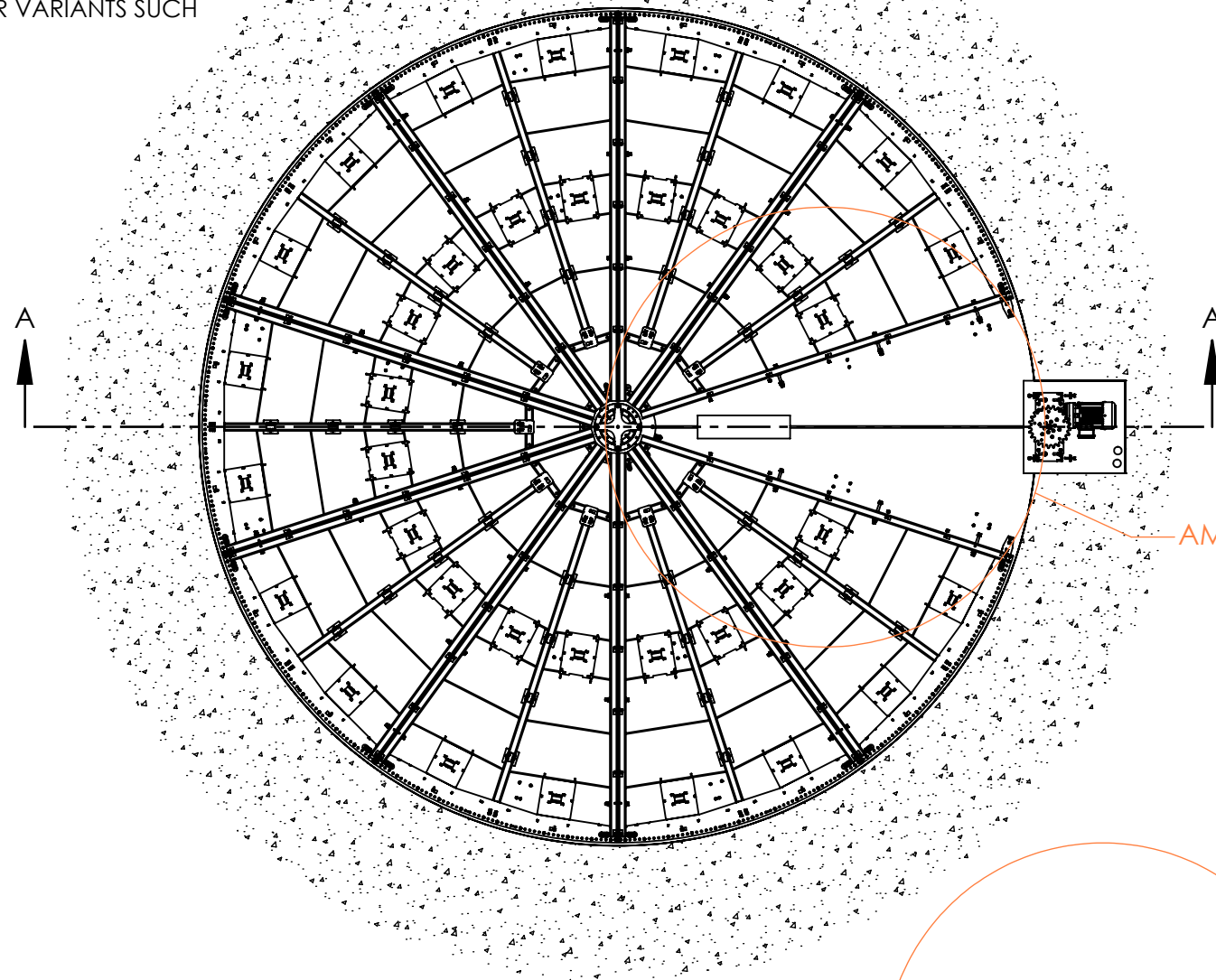
<p>UNLESS OTHERWISE NOTED DIMENSIONS ARE IN INCHES</p> <p>TOLERANCES</p> <p>.X = ± .060 .XX = ± .030 .XXX = ± .010</p> <p>FRACTIONAL = ± 1/16"</p> <p>ANGLES = ± .5</p>	<p>TITLE: 55SSV SURFACE MOUNTED TURNTABLE LOADING AND ANCHORING</p>			
	<p>CAROUSEL USA 15206 Ceres Avenue Fontana, CA 92335 TEL: (626) 334-7190 FAX: (626) 236-4060 www.Carousel-USA.com</p>	<p>PROPRIETARY AND CONFIDENTIAL The information contained in this drawing is the sole property of Carousel USA. Any reproduction in part or as a whole without the written permission of Carousel USA is prohibited.</p>	<p>SIZE B</p>	<p>DWG. NO. GA-55SSV</p>
	<p>SCALE: 1:25</p>	<p>DO NOT SCALE DRAWING</p>	<p>REV 12</p>	<p>SHEET 4 OF 4</p>

8 7 6 5 4 3 2 1

NOTES:

1. SLIP RING IS AN OPTIONAL ITEM.
2. THIS DRAWING IS APPLICABLE TO 55SSV TURNTABLE AND SIMILAR VARIANTS SUCH AS 55SSO, 55SSV-R

REVISIONS				
ZONE	REV.	DESCRIPTION	DATE	APPROVED
	A	INITIAL RELEASE	1/14/2026	MRC



DETAIL AN SCALE 1 : 16 ELEVATION

<p>UNLESS OTHERWISE NOTED DIMENSIONS ARE IN INCHES</p> <p>GENERAL TOLERANCES</p> <p>.X = ± .125</p> <p>.XX = ± .063</p> <p>FRACTIONAL = ± 1/16"</p> <p>ANGLES = ± .5</p>	DESIGN BY: D. OLIVERIO 1/14/2026	
	DRAFTED BY: A. HOVSEPIAN 1/15/2026	
	APPROVED BY: M. CASTRO 1/15/2026	
WEIGHT: 7508 LBS	TITLE: 55SSV SLIP RING AND FLOOR DETAILS OVERVIEW	
THIRD ANGLE PROJECTION	<p>CAROUSEL USA</p> <p>15206 Ceres Avenue Fontana, CA 92335 TEL: (626) 334-7190 FAX: (626) 236-4060 www.Carousel-USA.com</p>	<p>PROPRIETARY AND CONFIDENTIAL</p> <p>The information contained in this drawing is the sole property of Carousel USA. Any reproduction in part or as a whole without the written permission of Carousel USA is prohibited.</p>
	<p>SIZE B</p> <p>DWG. NO. 55SSV-SLIP RING</p> <p>SCALE: 1:64</p>	<p>REV A</p> <p>DO NOT SCALE DRAWING</p> <p>SHEET 1 OF 1</p>